

À des fins de recherche uniquement

Anticorps Monoclonal anti-TMF1

Numéro de catalogue: 67505-1-Ig **Phare**



Informations de base

Numéro de catalogue: 67505-1-Ig	Numéro d'acquisition GenBank: BC126123	Méthode de purification: Purification par protéine A
Taille: 150ul, Concentration: 2000 µg/ml by Nanodrop and 1000 µg/ml by Bradford method using BSA as the standard;	Identification du gène (NCBI): 7110	CloneNo.: 3G12F2
Hôte: Mouse	Nom complet: TATA element modulatory factor 1	Dilutions recommandées: WB 1:5000-1:50000 IF 1:50-1:500
Isotype: IgG1	MW calculé: 1093 aa, 123 kDa	
Immunogen Catalog Number: AG17666	MW observés: 150-160 kDa	

Applications

Applications testées:

IF, WB, ELISA

Spécificité de l'espèce:

Humain, rat, souris

Contrôles positifs:

WB : cellules LNCaP, cellules HEK-293, cellules HeLa, cellules HepG2, cellules HSC-T6, cellules Jurkat, cellules K-562, cellules NIH/3T3

IF : cellules HepG2,

Informations générales

TMF1, also named as ARA160, is a potential coactivator of the androgen receptor. TMF1 mediates STAT3 degradation. TMF1 plays critical roles in two RAB6-dependent retrograde transport processes: one from endosomes to the Golgi and the other from the Golgi to the ER. TMF1 binds the HIV-1 TATA element and inhibits transcriptional activation by the TATA-binding protein (TBP). The antibody is specific to TMF1. TMF1 can be detected as 150-160 kDa after posttranslational modification.

Stockage

Stockage:

Stocker à -20°C. Stable pendant un an après l'expédition.

Tampon de stockage:

PBS avec azoture de sodium à 0,02 % et glycérol à 50 % pH 7,3

L'aliquotage n'est pas nécessaire pour le stockage à -20C

***** Les 20ul contiennent 0,1% de BSA.**

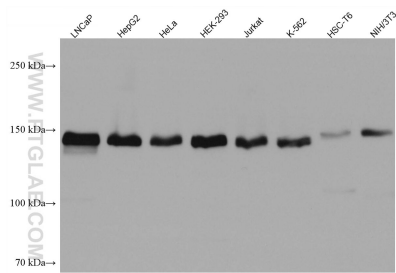
For technical support and original validation data for this product please contact:

T: 1 (888) 4PTGLAB (1-888-478-4522) (toll free in USA), or 1(312) 455-8498 (outside USA)

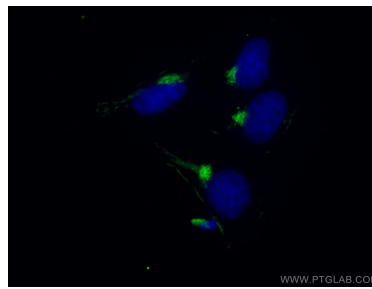
E: proteintech@ptglab.com
W: ptglab.com

This product is exclusively available under Proteintech Group brand and is not available to purchase from any other manufacturer.

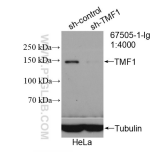
Données de validation sélectionnées



Various lysates were subjected to SDS PAGE followed by western blot with 67505-1-Ig (TMF1 antibody) at dilution of 1:10000 incubated at room temperature for 1.5 hours.



Immunofluorescent analysis of (4% PFA) fixed HepG2 cells using 67505-1-Ig (TMF1 antibody) at dilution of 1:100 and CoraLite488-Conjugated AffiniPure Goat Anti-Mouse IgG(H+L).



WB result of TMF1 antibody (67505-1-Ig; 1:4000; incubated at room temperature for 1.5 hours) with sh-Control and sh-TMF1 transfected HeLa cells.