

À des fins de recherche uniquement

Anticorps Monoclonal anti-RBM15B



Numéro de catalogue: 67506-1-Ig **1 Publications**

Informations de base

Numéro de catalogue: 67506-1-Ig	Numéro d'acquisition GenBank: BC001367	Méthode de purification: Purification par protéine A
Taille: 150ul, Concentration: 2400 µg/ml by Nanodrop and 1000 µg/ml by Bradford method using BSA as the standard;	Identification du gène (NCBI): 29890	CloneNo.: 1C2C11
Hôte: Mouse	Nom complet: RNA binding motif protein 15B	Dilutions recommandées: WB 1:1000-1:6000 IHC 1:500-1:2000
Isotype: IgG1	MW calculé: 890 aa, 97 kDa	
Immunogen Catalog Number: AG17853	MW observés: 105 kDa	

Applications

Applications testées:

IHC, WB, ELISA

Demandes citées:

WB

Spécificité de l'espèce:

Humain, rat

Espèces citées:

Humain

Remarque-IHC: il est suggéré de démasquer l'antigène avec un tampon de TE buffer pH 9,0; (*) A défaut, 'le démasquage de l'antigène peut être 'effectué avec un tampon citrate pH 6,0.

Contrôles positifs:

WB : cellules HeLa, cellules A549, cellules COLO 320, cellules HEK-293, cellules Jurkat, cellules K-562, cellules LNCaP, cellules THP-1

IHC : tissu de cancer du côlon humain, tissu de côlon de rat, tissu de côlon humain

Informations générales

RBM15B, one members of the SPEN (Split-end) family of proteins, have repressor function in several signaling pathways and may bind to RNA through interaction with spliceosome components. Present polyclonal anti-RBM15B antibody was produced by immunizing animals with C-terminus of RBM15B, which homolog with a short form of RBM15B(563aa, ~70kDa).

Publications notables

Autrice	Pubmed ID	Journal	Application
Keiko Horiuchi	34582888	J Biol Chem	WB

Stockage

Stockage:

Stocker à -20°C. Stable pendant un an après l'expédition.

Tampon de stockage:

PBS avec azoture de sodium à 0,02 % et glycérol à 50 % pH 7,3

L'aliquotage n'est pas nécessaire pour le stockage à -20C

*** Les 20ul contiennent 0,1% de BSA.

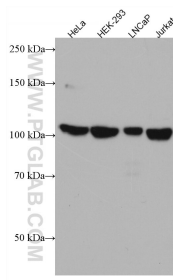
For technical support and original validation data for this product please contact:

T: 1 (888) 4PTGLAB (1-888-478-4522) (toll free in USA), or 1(312) 455-8498 (outside USA)

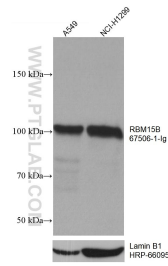
E: proteintech@ptglab.com
W: ptglab.com

This product is exclusively available under Proteintech Group brand and is not available to purchase from any other manufacturer.

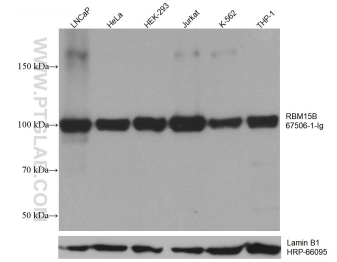
Données de validation sélectionnées



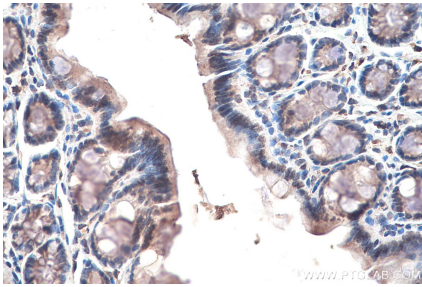
Various lysates were subjected to SDS PAGE followed by western blot with 67506-1-Ig (RBM15B antibody) at dilution of 1:3000 incubated at room temperature for 1.5 hours.



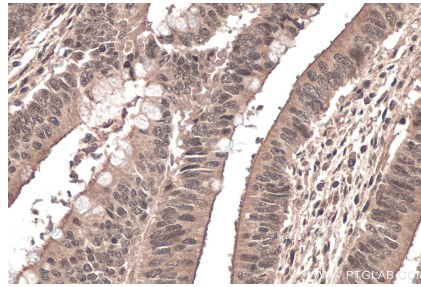
A549 cells were subjected to SDS PAGE followed by western blot with 67506-1-Ig (RBM15B antibody) at dilution of 1:10000 incubated at room temperature for 1.5 hours. The membrane was stripped and reblotted with HRP-conjugated Lamin B1 Monoclonal antibody (HRP-66095) as loading control.



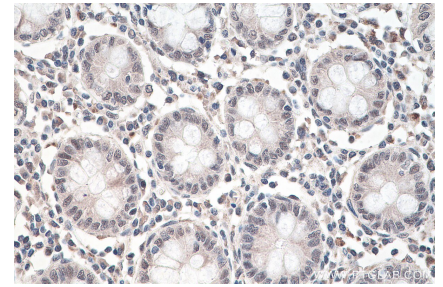
Various lysates were subjected to SDS PAGE followed by western blot with 67506-1-Ig (RBM15B antibody) at dilution of 1:10000 incubated at room temperature for 1.5 hours. The membrane was stripped and reblotted with HRP-conjugated Lamin B1 Monoclonal antibody (HRP-66095) as loading control.



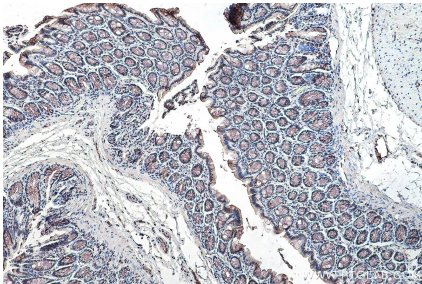
Immunohistochemical analysis of paraffin-embedded rat colon tissue slide using 67506-1-Ig (RBM15B antibody) at dilution of 1:2000 (under 40x lens). Heat mediated antigen retrieval with Tris-EDTA buffer (pH 9.0).



Immunohistochemical analysis of paraffin-embedded human colon cancer tissue slide using 67506-1-Ig (RBM15B antibody) at dilution of 1:1000 (under 40x lens). Heat mediated antigen retrieval with Tris-EDTA buffer (pH 9.0).



Immunohistochemical analysis of paraffin-embedded human colon tissue slide using 67506-1-Ig (RBM15B antibody) at dilution of 1:2000 (under 40x lens). Heat mediated antigen retrieval with Tris-EDTA buffer (pH 9.0).



Immunohistochemical analysis of paraffin-embedded rat colon tissue slide using 67506-1-Ig (RBM15B antibody) at dilution of 1:2000 (under 10x lens). Heat mediated antigen retrieval with Tris-EDTA buffer (pH 9.0).