

À des fins de recherche uniquement

# Anticorps Monoclonal anti-SPARCL1

Numéro de catalogue: 67511-1-Ig



## Informations de base

Numéro de catalogue: 67511-1-Ig	Numéro d'acquisition GenBank: BC033721	Méthode de purification: Purification par protéine G
Taille: 150ul, Concentration: 1600 µg/ml by Nanodrop and 1000 µg/ml by Bradford method using BSA as the standard;	Identification du gène (NCBI): 8404	CloneNo.: 1A9E7
Hôte: Mouse	Nom complet: SPARC-like 1 (hevin)	Dilutions recommandées: WB 1:1000-1:6000
Isotype: IgG1	MW calculé 664 aa, 75 kDa	
Immunogen Catalog Number: AG29092	MW observés: 140 kDa	

## Applications

Applications testées: WB, ELISA	Contrôles positifs: WB : salive humain, cellules Raji
Spécificité de l'espèce: Humain	

## Informations générales

SPARC-like protein 1 (SPARCL1), also known as SC1 or Hevin, is an extracellular matrix glycoprotein that belongs to the SPARC family. SPARCL1 is widely expressed in normal and cancer tissues, and has been shown to regulate cellular adhesion and migration. SPARCL1 has been implicated in tumor initiation, formation, and progression of various cancers, including pancreatic, prostate, bladder, ovarian, breast and non-small cell lung cancers.

## Stockage

**Stockage:**  
Stocker à -20°C. Stable pendant un an après l'expédition.  
**Tampon de stockage:**  
PBS avec azoture de sodium à 0,02 % et glycérol à 50 % pH 7,3  
L'aliquotage n'est pas nécessaire pour le stockage à -20C

**\*\*\* Les 20ul contiennent 0,1% de BSA.**

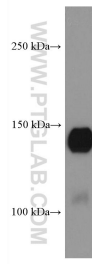
For technical support and original validation data for this product please contact:

T: 1 (888) 4PTGLAB (1-888-478-4522) (toll free  
in USA), or 1(312) 455-8498 (outside USA)

E: proteintech@ptglab.com  
W: ptglab.com

**This product is exclusively available under Proteintech Group brand and is not available to purchase from any other manufacturer.**

## Données de validation sélectionnées



human saliva were subjected to SDS PAGE followed by western blot with 67511-1-Ig (SPARCL1 antibody) at dilution of 1:3000 incubated at room temperature for 1.5 hours.