

À des fins de recherche uniquement

Anticorps Monoclonal anti-BSEP

Numéro de catalogue: 67512-1-Ig **1 Publications**



Informations de base

Numéro de catalogue: 67512-1-Ig	Numéro d'acquisition GenBank: NML_003742	Méthode de purification: Purification par protéine G
Taille: 150ul , Concentration: 2400 µg/ml by Nanodrop and 1000 µg/ml by Bradford method using BSA as the standard;	Identification du gène (NCBI): 8647	CloneNo.: 3C11D5
Hôte: Mouse	Nom complet: ATP-binding cassette, sub-family B (MDR/TAP), member 11	Dilutions recommandées: WB 1:5000-1:50000 IHC 1:8000-1:32000 IF 1:5000-1:20000
Isotype: IgG1	MW calculé: 146 kDa	
Immunogen Catalog Number: AG29135	MW observés: 150-160 kDa	

Applications

Applications testées:

IF, IHC, WB, ELISA

Demandes citées:

IHC

Spécificité de l'espèce:

Humain, rat, souris

Espèces citées:

souris

Remarque-IHC: il est suggéré de démasquer l'antigène avec un tampon de TE buffer pH 9,0; (*) A défaut, 'le démasquage de l'antigène peut être 'effectué avec un tampon citrate pH 6,0.

Contrôles positifs:

WB : cellules LNCaP, cellules A549, cellules HeLa, cellules HepG2 non bouillies, tissu hépatique de rat, tissu hépatique de souris, tissu pulmonaire de porc

IHC : tissu hépatique de souris, tissu de cancer du col de l'utérus humain

IF : tissu hépatique de souris,

Informations générales

ABCB11, also named as BSEP, belongs to the ABC transporter superfamily. ABCB11 involved in the ATP-dependent secretion of bile salts into the canaliculus of hepatocytes. Mutation of ABCB11 will cause the progressive familial intrahepatic cholestasis type 2 (PFIC2) and the benign recurrent intrahepatic cholestasis type 2 (BRIC2). Genetic variations in ABCB11 may play a role in drug-induced cholestasis causing liver damage. The calculated MW of ABCB11 is 146 kDa, 67512-1-Ig can detect bands around 150 kDa. It's reported that ABCB11 has several N-glycosylation sites, the observed higher molecular mass may due to posttranslational N-glycosylation. (PMID: 9545351, 24359682)

Publications notables

Autrice	Pubmed ID	Journal	Application
Qingling Chen	37089915	Front Pharmacol	IHC

Stockage

Stockage:

Stocker à -20°C. Stable pendant un an après l'expédition.

Tampon de stockage:

PBS avec azote de sodium à 0,02 % et glycérol à 50 % pH 7,3

L'aliquotage n'est pas nécessaire pour le stockage à -20C

***** Les 20ul contiennent 0,1% de BSA.**

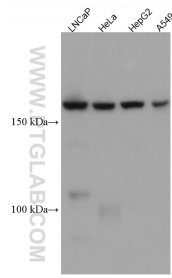
For technical support and original validation data for this product please contact:

T: 1 (888) 4PTGLAB (1-888-478-4522) (toll free in USA), or 1(312) 455-8498 (outside USA)

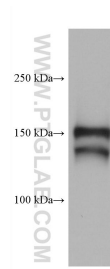
E: proteintech@ptglab.com
W: ptglab.com

This product is exclusively available under Proteintech Group brand and is not available to purchase from any other manufacturer.

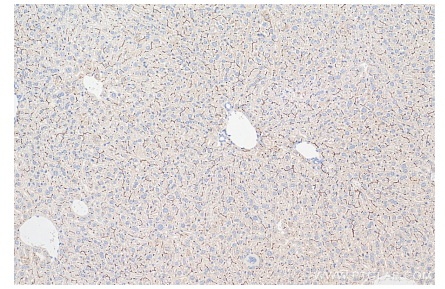
Données de validation sélectionnées



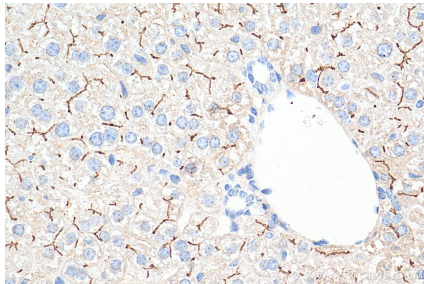
Various lysates were subjected to SDS PAGE followed by western blot with 67512-1-Ig (BSEP antibody) at dilution of 1:20000 incubated at room temperature for 1.5 hours.



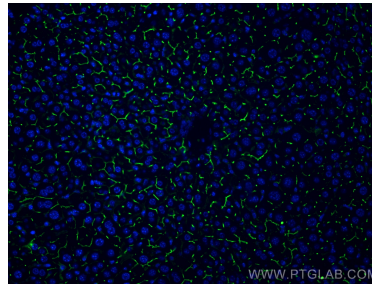
mouse liver tissue were subjected to SDS PAGE followed by western blot with 67512-1-Ig (BSEP antibody) at dilution of 1:10000 incubated at room temperature for 1.5 hours.



Immunohistochemical analysis of paraffin-embedded mouse liver tissue slide using 67512-1-Ig (BSEP antibody) at dilution of 1:16000 (under 10x lens). Heat mediated antigen retrieval with Tris-EDTA buffer (pH 9.0).



Immunohistochemical analysis of paraffin-embedded mouse liver tissue slide using 67512-1-Ig (BSEP antibody) at dilution of 1:16000 (under 40x lens). Heat mediated antigen retrieval with Tris-EDTA buffer (pH 9.0).



Immunofluorescent analysis of (4% PFA) fixed mouse liver tissue using BSEP antibody (67512-1-Ig, Clone: 3C11D5) at dilution of 1:10000 and Coralite®488-Conjugated AffiniPure Goat Anti-Mouse IgG(H+L).