

À des fins de recherche uniquement

Anticorps Monoclonal anti-SALL2

Numéro de catalogue: 67522-1-Ig



Informations de base

Numéro de catalogue: 67522-1-Ig	Numéro d'acquisition GenBank: BC024245	Méthode de purification: Purification par protéine A
Taille: 150ul, Concentration: 1600 µg/ml by Nanodrop and 1000 µg/ml by Bradford method using BSA as the standard;	Identification du gène (NCBI): 6297	CloneNo.: 3B6G2
Hôte: Mouse	Nom complet: sal-like 2 (Drosophila)	Dilutions recommandées: WB 1:1000-1:6000
Isotype: IgG2a	MW calculé 1007 aa, 105 kDa	
Immunogen Catalog Number: AG30007	MW observés: 140 kDa	

Applications

Applications testées: WB, ELISA	Contrôles positifs: WB : cellules HEK-293, cellules Jurkat, cellules K-562, cellules NCCIT
Spécificité de l'espèce: Humain, rat, souris	

Informations générales

Sall2 (SALL2, sal-like 2, HSA2, p150(Sal2)) are mammalian homologs of the Drosophila region-specific home-otic gene spalt (sal), which encodes a zinc finger- containing transcription regulator. Mammalian Sall1 may mediate higher order chromatin structure and may be a component of a distinct heterochromatin-dependent silencing process. Sall2 is a p53-independent regulator of p21 and BAX, and can function in some cell types as a regulator of cell survival. Human Sall2 is present in brain, heart, kidney and pancreas.

Stockage

Stockage:
Stocker à -20°C. Stable pendant un an après l'expédition.
Tampon de stockage:
PBS avec azoture de sodium à 0,02 % et glycérol à 50 % pH 7,3
L'aliquotage n'est pas nécessaire pour le stockage à -20C

*** Les 20ul contiennent 0,1% de BSA.

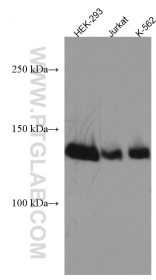
For technical support and original validation data for this product please contact:

T: 1 (888) 4PTGLAB (1-888-478-4522) (toll free
in USA), or 1(312) 455-8498 (outside USA)

E: proteintech@ptglab.com
W: ptglab.com

This product is exclusively available under Proteintech Group brand and is not available to purchase from any other manufacturer.

Données de validation sélectionnées



Various lysates were subjected to SDS PAGE followed by western blot with 67522-1-Ig (SALL2 antibody) at dilution of 1:3000 incubated at room temperature for 1.5 hours.