

À des fins de recherche uniquement

# Anticorps Monoclonal anti-GPT/ALT1

Numéro de catalogue: 67531-1-Ig



## Informations de base

Numéro de catalogue: 67531-1-Ig	Numéro d'acquisition GenBank: BC018207	Méthode de purification: Purification par protéine A
Taille: 150ul , Concentration: 2300 µg/ml by Nanodrop and 1000 µg/ml by Bradford method using BSA as the standard;	Identification du gène (NCBI): 2875	CloneNo.: 5F6B5
Hôte: Mouse	Nom complet: glutamic-pyruvate transaminase (alanine aminotransferase)	Dilutions recommandées: WB 1:5000-1:50000 IF 1:50-1:500
Isotype: IgG1	MW calculé 496 aa, 55 kDa	
Immunogen Catalog Number: AG10453	MW observés: 52 kDa	

## Applications

Applications testées:  
IF, WB, ELISA

Spécificité de l'espèce:  
Humain, porc

### Contrôles positifs:

WB : lait humain, tissu cardiaque de lapin, tissu  
cardiaque de porc, tissu hépatique de porc, tissu  
hépatique de rat, tissu hépatique de souris

IF : cellules HepG2,

## Informations générales

GPT, also known as ALT1 (glutamate-pyruvate transaminase 1), catalyzes the reversible transamination between alanine and 2-oxoglutarate to generate pyruvate and glutamate and, therefore, plays a key role in the intermediary metabolism of glucose and amino acids. Serum activity levels of this enzyme are routinely used as a biomarker of liver injury caused by drug toxicity, infection, alcohol, and steatosis. A related gene on chromosome 16 encodes a putative mitochondrial alanine aminotransaminase.

## Stockage

Stockage:  
Stocker à -20°C. Stable pendant un an après l'expédition.

Tampon de stockage:  
PBS avec azoture de sodium à 0,02 % et glycérol à 50 % pH 7,3  
L'aliquotage n'est pas nécessaire pour le stockage à -20C

**\*\*\* Les 20ul contiennent 0,1% de BSA.**

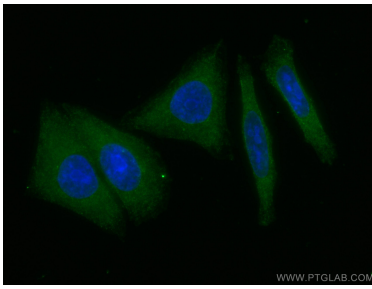
For technical support and original validation data for this product please contact:

T: 1 (888) 4PTGLAB (1-888-478-4522) (toll free  
in USA), or 1(312) 455-8498 (outside USA)

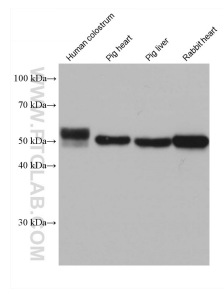
E: [proteintech@ptglab.com](mailto:proteintech@ptglab.com)  
W: [ptglab.com](http://ptglab.com)

**This product is exclusively available under Proteintech Group brand and is not available to purchase from any other manufacturer.**

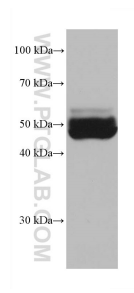
## Données de validation sélectionnées



Immunofluorescent analysis of (-20°C Ethanol) fixed HepG2 cells using GPT antibody (67531-1-Ig, Clone: 5F6B5) at dilution of 1:400 and CoraLite@488-Conjugated AffiniPure Goat Anti-Mouse IgG(H+L).



Various lysates were subjected to SDS PAGE followed by western blot with 67531-1-Ig (GPT/ALT1 antibody) at dilution of 1:10000 incubated at room temperature for 1.5 hours.



mouse liver tissue were subjected to SDS PAGE followed by western blot with 67531-1-Ig (GPT/ALT1 antibody) at dilution of 1:10000 incubated at room temperature for 1.5 hours.