

À des fins de recherche uniquement

# Anticorps Monoclonal anti-human IgD



Numéro de catalogue: 67538-1-Ig **1 Publications**

## Informations de base

Numéro de catalogue: 67538-1-Ig	Numéro d'acquisition GenBank: BC021276	Méthode de purification: Purification par protéine A
Taille: 150ul, Concentration: 1700 µg/ml by Nanodrop and 1000 µg/ml by Bradford method using BSA as the standard;	Identification du gène (NCBI): 3495	CloneNo.: 1D1B12
Hôte: Mouse	Nom complet: immunoglobulin heavy constant delta	Dilutions recommandées: WB 1:5000-1:50000 IHC 1:10000-1:40000 IF 1:200-1:800
Isotype: IgG2a	MW calculé 573 aa, 63 kDa	
Immunogen Catalog Number: AG9614	MW observés: 55-70 kDa	

## Applications

Applications testées: IF, IHC, WB, ELISA	Contrôles positifs: WB : plasma humain, IHC : tissu d'amygdalite humain, IF : tissu d'amygdalite humain,
Demandes citées: IF	
Spécificité de l'espèce: Humain	
Espèces citées: Humain	
<b>Remarque-IHC: il est suggéré de démasquer l'antigène avec un tampon de TE buffer pH 9,0; (*) A défaut, 'le démasquage de l'antigène peut être 'effectué avec un tampon citrate pH 6,0.</b>	

## Informations générales

IgD is the major antigen receptor isotype on the surface of most peripheral B-cells. The function of IgD is to signal the B cells to be activated. The relative molecular mass and half-life of secreted IgD is 185 kDa and 2.8 days, respectively. Secreted IgD is produced as a monomeric antibody with two heavy chains of the delta ( $\delta$ ) class, and two Ig light chains. This antibody detects the heavy chain (55-70 kDa) of IgD and secreted IgD (185 kDa).

## Publications notables

Autrice	Pubmed ID	Journal	Application
Jianfei Zhu	36434043	Exp Mol Med	IF

## Stockage

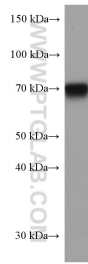
Stockage:  
Stocker à -20 °C  
Tampon de stockage:  
PBS avec azoture de sodium à 0,02 % et glycérol à 50 % pH 7,3  
L'aliquotage n'est pas nécessaire pour le stockage à -20C

\*\*\* Les 20ul contiennent 0,1% de BSA.

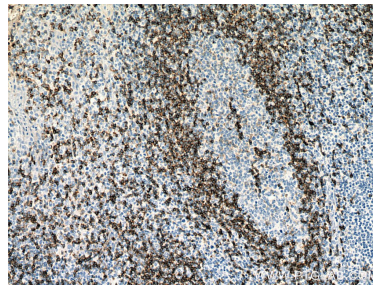
For technical support and original validation data for this product please contact:  
T: 1 (888) 4PTGLAB (1-888-478-4522) (toll free in USA), or 1(312) 455-8498 (outside USA)  
E: [proteintech@ptglab.com](mailto:proteintech@ptglab.com)  
W: [ptglab.com](http://ptglab.com)

This product is exclusively available under Proteintech Group brand and is not available to purchase from any other manufacturer.

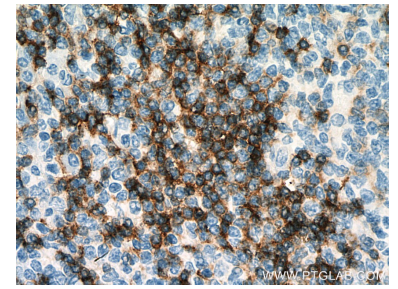
## Données de validation sélectionnées



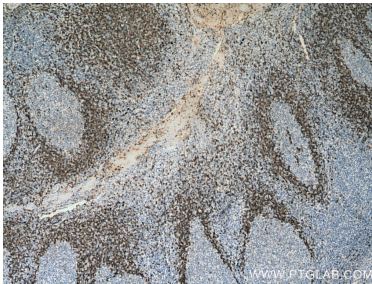
human plasma (0.1 ul) were subjected to SDS PAGE followed by western blot with 67538-1-Ig (human IgD antibody) at dilution of 1:20000 incubated at room temperature for 1.5 hours.



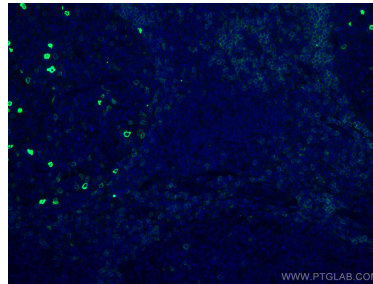
Immunohistochemical analysis of paraffin-embedded human tonsillitis tissue slide using 67538-1-Ig (human IgD antibody) at dilution of 1:20000 (under 10x lens). Heat mediated antigen retrieval with Tris-EDTA buffer (pH 9.0).



Immunohistochemical analysis of paraffin-embedded human tonsillitis tissue slide using 67538-1-Ig (human IgD antibody) at dilution of 1:20000 (under 40x lens). Heat mediated antigen retrieval with Tris-EDTA buffer (pH 9.0).



Immunohistochemical analysis of paraffin-embedded human tonsillitis tissue slide using 67538-1-Ig (human IgD antibody) at dilution of 1:20000 (under 4x lens). Heat mediated antigen retrieval with Tris-EDTA buffer (pH 9.0).



Immunofluorescent analysis of (4% PFA) fixed human tonsillitis tissue using IgHD antibody (67538-1-Ig, Clone: 1D1B12) at dilution of 1:400 and CoraLite® 488-Conjugated AffiniPure Goat Anti-Mouse IgG(H+L).