

À des fins de recherche uniquement

# Anticorps Monoclonal anti-RHOC

Numéro de catalogue: 67542-1-Ig



## Informations de base

Numéro de catalogue: 67542-1-Ig	Numéro d'acquisition GenBank: BC007245	Méthode de purification: Purification par protéine A
Taille: 150ul , Concentration: 2100 µg/ml by 389 Nanodrop and 1000 µg/ml by Bradford method using BSA as the standard;	Identification du gène (NCBI): ras homolog gene family, member C	CloneNo.: 1G1C1
Hôte: Mouse	Nom complet: ras homolog gene family, member C	Dilutions recommandées: WB 1:5000-1:20000 IHC 1:400-1:1600 IF 1:200-1:800
Isotype: IgG1	MW calculé: 22 kDa	
Immunogen Catalog Number: AG14633	MW observés: 22 kDa	

## Applications

### Applications testées:

FC, IF, IHC, WB, ELISA

### Spécificité de l'espèce:

Humain, rat, souris

**Remarque-IHC: il est suggéré de démasquer l'antigène avec un tampon de TE buffer pH 9.0; (\*) À défaut, le démasquage de l'antigène peut être effectué avec un tampon citrate pH 6,0.**

### Contrôles positifs:

WB : cellules LNCaP, cellules C6, cellules HEK-293, cellules HeLa, cellules HepG2, cellules HSC-T6, cellules Jurkat, cellules K-562, cellules NIH/3T3, cellules PC-12, cellules RAW 264.7

IHC : tissu d'intestin grêle humain,

IF : cellules HeLa,

## Informations générales

Ras homolog family member C (RHOC) encodes a Rho-related GTP-binding protein, which belongs to small GTPase superfamily and also Rho family. RHOC. Regulates a signal transduction pathway linking plasma membrane receptors to the assembly of focal adhesions and actin stress fibers. Expression of RHOC contributes to metastatic phenotype of melanoma cells and is associated with multiple cancers including gastric carcinomas, ovarian carcinomas and breast cancer as well.

## Stockage

### Stockage:

Stocker à -20°C. Stable pendant un an après l'expédition.

### Tampon de stockage:

PBS avec azoture de sodium à 0,02 % et glycérol à 50 % pH 7,3

L'aliquotage n'est pas nécessaire pour le stockage à -20C

\*\*\* Les 20ul contiennent 0,1% de BSA.

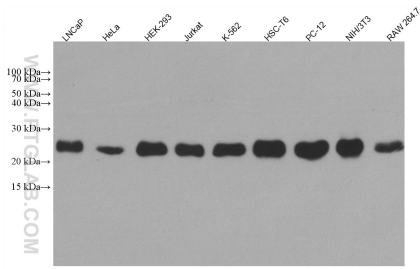
For technical support and original validation data for this product please contact:

T: 1 (888) 4PTGLAB (1-888-478-4522) (toll free  
in USA), or 1(312) 455-8498 (outside USA)

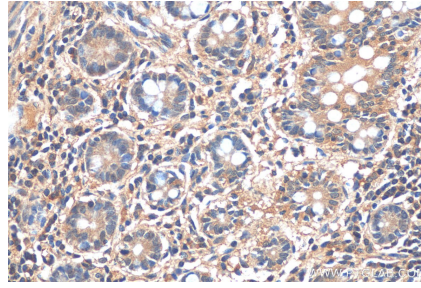
E: proteintech@ptglab.com  
W: ptglab.com

This product is exclusively available under Proteintech Group brand and is not available to purchase from any other manufacturer.

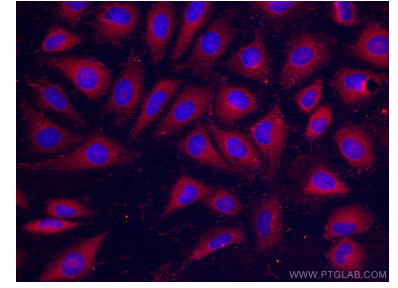
## Données de validation sélectionnées



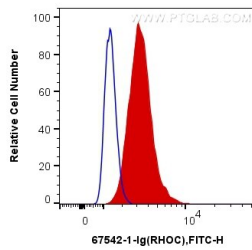
Various lysates were subjected to SDS PAGE followed by western blot with 67542-1-Ig (RHOC antibody) at dilution of 1:20000 incubated at room temperature for 1.5 hours.



Immunohistochemical analysis of paraffin-embedded human small intestine tissue slide using 67542-1-Ig (RHOC antibody) at dilution of 1:800 (under 40x lens).



Immunofluorescent analysis of (4% PFA) fixed HeLa cells using RHOC antibody (67542-1-Ig, Clone: 1G1C1 ) at dilution of 1:400 and CoraLite®488-Conjugated AffiniPure Goat Anti-Mouse IgG(H+L).



$1 \times 10^6$  HepG2 cells were intracellularly stained with 0.4  $\mu$ g Anti-Human RHOC (67542-1-Ig, Clone: 1G1C1) and CoraLite®488-Conjugated AffiniPure Goat Anti-Mouse IgG(H+L) at dilution 1:1000 (red), or 0.4  $\mu$ g Control Antibody. Cells were fixed with 4% PFA and permeabilized with Flow Cytometry Perm Buffer (PF00011-C).