

À des fins de recherche uniquement

Anticorps Monoclonal anti-CRX

Numéro de catalogue: 67555-1-Ig



Informations de base

Numéro de catalogue: 67555-1-Ig	Numéro d'acquisition GenBank: BC016664	Méthode de purification: Purification par protéine G
Taille: 150ul , Concentration: 1000 µg/ml by Bradford method using BSA as the standard;	Identification du gène (NCBI): 1406	CloneNo.: 1C3C11
Hôte: Mouse	Nom complet: cone-rod homeobox	Dilutions recommandées: WB 1:1000-1:6000
Isotype: IgG1	MW calculé 299 aa, 32 kDa	
Immunogen Catalog Number: AG30086	MW observés: 37 kDa	

Applications

Applications testées: WB, ELISA	Contrôles positifs: WB : tissu rétinien de rat, cellules Y79, tissu rétinien de porc, tissu rétinien de souris
Spécificité de l'espèce: Humain, porc, rat, souris	

Informations générales

Cone-rod homeobox (Crx) is a homeodomain transcription factor and member of the Otx family, which has been thought to play a critical role in determining and maintaining the phenotype of both pinealocytes and retinal photoreceptors [PMID:17467693]. In the mammalian retina, Crx plays an essential role in the normal development and maintenance of cones and rods and regulates expression of the network of genes that characterize the retina [PMID:17653270]. Elimination of Crx by disruption of the homeobox domain results in loss of the image-forming visual system but not the non-image-forming visual system controlling circadian rhythms [PMID:20438719].

Stockage

Stockage:
Stocker à -20°C. Stable pendant un an après l'expédition.
Tampon de stockage:
PBS avec azoture de sodium à 0,02 % et glycérol à 50 % pH 7,3
L'aliquotage n'est pas nécessaire pour le stockage à -20C

*** Les 20ul contiennent 0,1% de BSA.

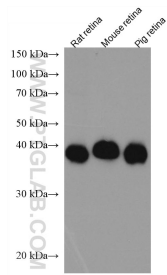
For technical support and original validation data for this product please contact:

T: 1 (888) 4PTGLAB (1-888-478-4522) (toll free
in USA), or 1(312) 455-8498 (outside USA)

E: proteintech@ptglab.com
W: ptglab.com

This product is exclusively available under Proteintech Group brand and is not available to purchase from any other manufacturer.

Données de validation sélectionnées



Various lysates were subjected to SDS PAGE followed by western blot with 67555-1-Ig (CRX antibody) at dilution of 1:3000 incubated at room temperature for 1.5 hours.