

À des fins de recherche uniquement

Anticorps Monoclonal anti-RPS14

Numéro de catalogue: 67566-1-Ig



Informations de base

Numéro de catalogue: 67566-1-Ig	Numéro d'acquisition GenBank: BC003401	Méthode de purification: Purification par protéine A
Taille: 150ul , Concentration: 1800 µg/ml by Nanodrop and 1000 µg/ml by Bradford method using BSA as the standard;	Identification du gène (NCBI): 6208	CloneNo.: 3D5H5
Hôte: Mouse	Nom complet: ribosomal protein S14	Dilutions recommandées: WB 1:5000-1:50000 IHC 1:500-1:2000 IF 1:50-1:500
Isotype: IgG2b	MW calculé 16 kDa	
Immunogen Catalog Number: AG30032	MW observés: 16 kDa	

Applications

Applications testées:

IF, IHC, WB, ELISA

Spécificité de l'espèce:

Humain, rat, souris

Remarque-IHC: il est suggéré de démasquer l'antigène avec un tampon de TE buffer pH 9,0; (*) À défaut, le démasquage de l'antigène peut être effectué avec un tampon citrate pH 6,0.

Contrôles positifs:

WB : cellules A549, cellules 4T1, cellules HeLa, cellules HepG2, cellules HSC-T6, cellules HuH-7, cellules K-562, cellules NIH/3T3, cellules PC-12

IHC : tissu de carcinome urothélial humain,

IF : cellules HepG2,

Informations générales

The mammalian ribosome consists of 4 RNA species and approximately 80 different proteins. The ribosomal proteins are encoded by complex gene families that include at least 1 active intron-containing gene and multiple processed pseudogenes[PMID 3785212]. The RPS14 gene, encoding a ribosomal protein that belongs to the 40S ribosome, and mapping to the commonly deleted region (CDR) of the 5q- syndrome, shows haploinsufficiency in the CD34+ cells of patients with this disorder[PMID:22430631].

Stockage

Stockage:

Stocker à -20°C. Stable pendant un an après l'expédition.

Tampon de stockage:

PBS avec azoture de sodium à 0,02 % et glycérol à 50 % pH 7,3

L'aliquotage n'est pas nécessaire pour le stockage à -20C

*** Les 20ul contiennent 0,1% de BSA.

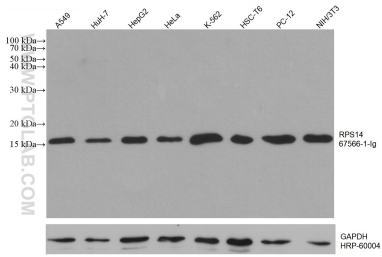
For technical support and original validation data for this product please contact:

T: 1 (888) 4PTGLAB (1-888-478-4522) (toll free in USA), or 1(312) 455-8498 (outside USA)

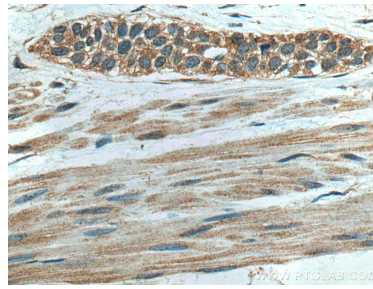
E: proteintech@ptglab.com
W: ptglab.com

This product is exclusively available under Proteintech Group brand and is not available to purchase from any other manufacturer.

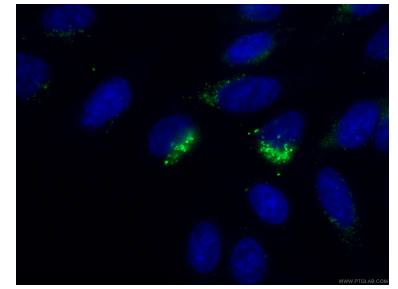
Données de validation sélectionnées



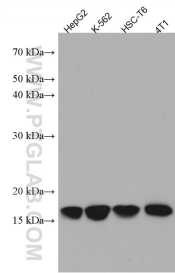
Various lysates were subjected to SDS PAGE followed by western blot with 67566-1-Ig (RPS14 antibody) at dilution of 1:10000 incubated at room temperature for 1.5 hours. The membrane was stripped and reblotted with HRP-conjugated GAPDH Monoclonal antibody (HRP-60004) as loading control.



Immunohistochemical analysis of paraffin-embedded human urothelial carcinoma tissue slide using 67566-1-Ig (RPS14 antibody) at dilution of 1:1000 (under 40x lens). Heat mediated antigen retrieval with Tris-EDTA buffer (pH 9.0).



Immunofluorescent analysis of (-20°C Ethanol) fixed HepG2 cells using 67566-1-Ig (RPS14 antibody), at dilution of 1:200 and CoraLite® 488-Conjugated AffiniPure Goat Anti-Mouse IgG(H+L).



Various lysates were subjected to SDS PAGE followed by western blot with 67566-1-Ig (RPS14 antibody) at dilution of 1:5000 incubated at room temperature for 1.5 hours.