

À des fins de recherche uniquement

Anticorps Monoclonal anti-CDK1

Numéro de catalogue: 67575-1-Ig **9 Publications**



Informations de base

Numéro de catalogue: 67575-1-Ig	Numéro d'acquisition GenBank: BC014563	Méthode de purification: Purification par protéine A
Taille: 150ul , Concentration: 1919 µg/ml by Nanodrop and 1000 µg/ml by Bradford method using BSA as the standard;	Identification du gène (NCBI): 983	CloneNo.: 2A11E4
Hôte: Mouse	Nom complet: cell division cycle 2, G1 to S and G2 to M	Dilutions recommandées: 1:5000-1:50000
Isotype: IgG2a	MW calculé: 25 kDa	
Immunogen Catalog Number: AG29018	MW observés: 34 kDa	

Applications

Applications testées:

FC, WB, ELISA

Demandes citées:

WB

Spécificité de l'espèce:

Humain, rat, souris

Espèces citées:

Humain, souris

Contrôles positifs:

WB : cellules HEK-293, cellules A549, cellules HeLa,
cellules HSC-T6, cellules Jurkat, cellules K-562,
cellules NIH/3T3

Informations générales

CDK1, also named as CDC2, belongs to the protein kinase superfamily, CMGC Ser/Thr protein kinase family and CDC2/CDKX subfamily. CDK1 plays a key role in the control of the eukaryotic cell cycle. It is required in higher cells for entry into S-phase and mitosis. CDK1 is a catalytic subunit of the highly conserved protein kinase complex known as M-phase promoting factor (MPF), which is essential for G1/S and G2/M phase transitions of eukaryotic cell cycle. It is a component of the kinase complex that phosphorylates the repetitive C-terminus of RNA polymerase II. Mitotic cyclins stably associate with CDK1 and function as regulatory subunits. CDK1 has 2 isoforms produced by alternative splicing with the molecular mass of 34 kDa and 27 kDa.

Publications notables

Autrice	Pubmed ID	Journal	Application
Silu Hou	36427601	Food Chem Toxicol	WB
Chao Wu	34809653	Chin Med	WB
Ya Li	34003522	Mol Carcinog	WB

Stockage

Stockage:

Stocker à -20 °C

Tampon de stockage:

PBS avec azoture de sodium à 0,02 % et glycérol à 50 % pH 7,3

L'aliquotage n'est pas nécessaire pour le stockage à -20C

*** Les 20ul contiennent 0,1% de BSA.

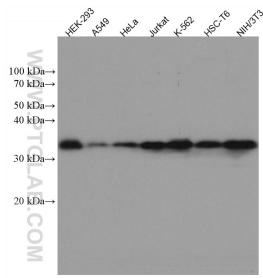
For technical support and original validation data for this product please contact:

T: 1 (888) 4PTGLAB (1-888-478-4522) (toll free
in USA), or 1(312) 455-8498 (outside USA)

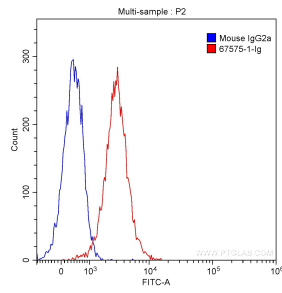
E: proteintech@ptglab.com
W: ptglab.com

This product is exclusively available under Proteintech Group brand and is not available to purchase from any other manufacturer.

Données de validation sélectionnées



Various lysates were subjected to SDS PAGE followed by western blot with 67575-1-Ig (CDK1 antibody) at dilution of 1:10000 incubated at room temperature for 1.5 hours.



1×10^6 HeLa cells were intracellularly stained with 0.20 ug Anti-Human CDK1 (67575-1-Ig, Clone: 2A11E4) and CoraLite@488-Conjugated AffiniPure Goat Anti-Mouse IgG(H+L) with dilution 1:1000 (red), or stained with 0.20 ug Mouse IgG2a Isotype Control and CoraLite@488-Conjugated AffiniPure Goat Anti-Mouse IgG(H+L) with dilution 1:1000 (blue). Cells were fixed with 90% MeOH.