

À des fins de recherche uniquement

Anticorps Monoclonal anti-ETV6

Numéro de catalogue: 67579-1-Ig



Informations de base

Numéro de catalogue: 67579-1-Ig	Numéro d'acquisition GenBank: BC043399	Méthode de purification: Purification par protéine G
Taille: 150ul , Concentration: 1000 µg/ml by Nanodrop and 556 µg/ml by Bradford method using BSA as the standard;	Identification du gène (NCBI): 2120	CloneNo.: 2A5A2
Hôte: Mouse	Nom complet: ets variant 6	Dilutions recommandées: WB 1:1000-1:6000 IHC 1:50-1:500
Isotype: IgG1	MW calculé 452 aa, 53 kDa	
Immunogen Catalog Number: AG30054	MW observés: 60 kDa	

Applications

Applications testées:

IHC, WB, ELISA

Spécificité de l'espèce:

Humain

Remarque-IHC: il est suggéré de démasquer l'antigène avec un tampon de TE buffer pH 9,0; (*) À défaut, 'le démasquage de l'antigène peut être 'effectué avec un tampon citrate pH 6,0.

Contrôles positifs:

WB : cellules Jurkat, cellules A431, cellules K-562, cellules THP-1, cellules U2OS

IHC : tissu de cancer du sein humain, tissu de cancer du poumon humain

Informations générales

ETV6(ETS Variant Transcription Factor 6), also known as TEL, is a Protein Coding gene. ETV6 is a member of the ETS family of transcription factors encoded by the ETS variant 6 gene (ETV6), located on chromosome 12p13.2. ETV6 protein contains 3 domains: a) the pointed N-terminal (i.e. PNT) domain which forms oligomer partners with itself as well as other transcription factors (e.g. FLI1) and is required for ETV6's transcriptional repressing activity; b) the central regulatory domain; and c) the C-terminal DNA-binding domain(PMID: 22578774). ETV6 is highly expressed in early hematopoietic progenitor cells(HPCs) and is essential for hematopoiesis in the bone marrow(PMID: 31248877).

Stockage

Stockage:

Stocker à -20 °C.

Tampon de stockage:

PBS avec azoture de sodium à 0,1 % et glycérol à 50 % pH 7,3

L'aliquotage n'est pas nécessaire pour le stockage à -20C

*** Les 20ul contiennent 0,1% de BSA.

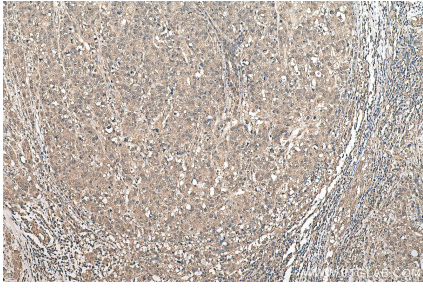
For technical support and original validation data for this product please contact:

T: 1 (888) 4PTGLAB (1-888-478-4522) (toll free
in USA), or 1(312) 455-8498 (outside USA)

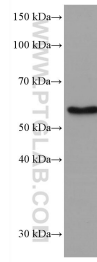
E: proteintech@ptglab.com
W: ptglab.com

This product is exclusively available under Proteintech Group brand and is not available to purchase from any other manufacturer.

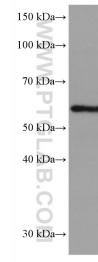
Données de validation sélectionnées



Immunohistochemical analysis of paraffin-embedded human breast cancer tissue slide using 67579-1-Ig (ETV6 antibody) at dilution of 1:100 (under 10x lens). Heat mediated antigen retrieval with Tris-EDTA buffer (pH 9.0).



Jurkat cells were subjected to SDS PAGE followed by western blot with 67579-1-Ig (ETV6 antibody) at dilution of 1:3000 incubated at room temperature for 1.5 hours.



K-562 cells were subjected to SDS PAGE followed by western blot with 67579-1-Ig (ETV6 antibody) at dilution of 1:3000 incubated at room temperature for 1.5 hours.