

À des fins de recherche uniquement

Anticorps Monoclonal anti-HINT1

Numéro de catalogue: 67583-1-Ig



Informations de base

Numéro de catalogue: 67583-1-Ig	Numéro d'acquisition GenBank: BC007090	Méthode de purification: Purification par protéine A
Taille: 150ul, Concentration: 2500 µg/ml by Nanodrop and 1500 µg/ml by Bradford method using BSA as the standard;	Identification du gène (NCBI): 3094	CloneNo.: 1G3E4
Hôte: Mouse	Nom complet: histidine triad nucleotide binding protein 1	Dilutions recommandées: WB 1:500-1:2000 IHC 1:50-1:500 IF 1:200-1:800
Isotype: IgG2a	MW calculé: 14 kDa	
Immunogen Catalog Number: AG16662	MW observés: 14 kDa	

Applications

Applications testées:

IF, IHC, WB, ELISA

Spécificité de l'espèce:

Humain

Remarque-IHC: il est suggéré de démasquer l'antigène avec un tampon de TE buffer pH 9.0; (*) À défaut, le démasquage de l'antigène peut être effectué avec un tampon citrate pH 6,0.

Contrôles positifs:

WB : cellules LNCaP, cellules HeLa, cellules HepG2, cellules Jurkat, cellules K-562

IHC : tissu de cancer du sein humain,

IF : cellules HeLa,

Informations générales

HINT1(Histidine triad nucleotide-binding protein 1) is also named as HINT, PKC11, PRKCNH1, which is a member of the histidine triad (HIT) family, highly conserved in diverse species and ubiquitously expressed in mammalian tissues. It hydrolyzes adenosine 5'-monophosphoramidate substrates such as AMP-morpholidate, AMP-N-alanine methyl ester, AMP-alpha-acetyl lysine methyl ester and AMP-NH2.

Stockage

Stockage:

Stocker à -20 °C.

Tampon de stockage:

PBS avec azote de sodium à 0,02 % et glycérol à 50 % pH 7,3

L'aliquotage n'est pas nécessaire pour le stockage à -20C

*** Les 20ul contiennent 0,1% de BSA.

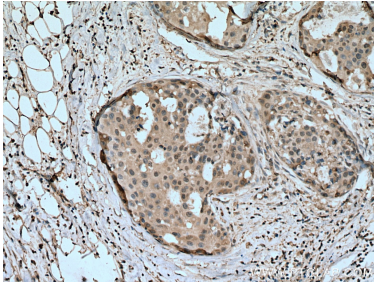
For technical support and original validation data for this product please contact:

T: 1 (888) 4PTGLAB (1-888-478-4522) (toll free in USA), or 1(312) 455-8498 (outside USA)

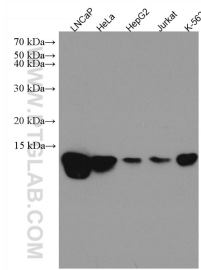
E: proteintech@ptglab.com
W: ptglab.com

This product is exclusively available under Proteintech Group brand and is not available to purchase from any other manufacturer.

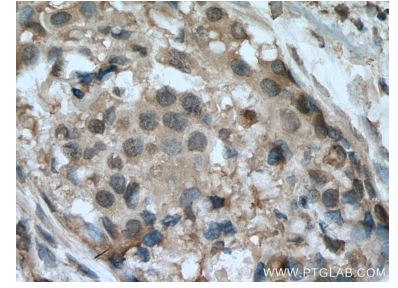
Données de validation sélectionnées



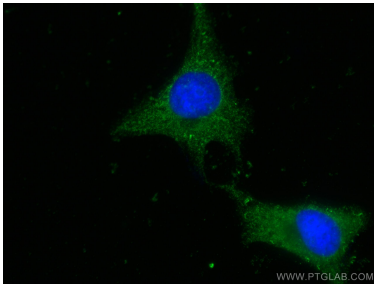
Immunohistochemical analysis of paraffin-embedded human breast cancer tissue slide using 67583-1-Ig (HINT1 antibody) at dilution of 1:200 (under 10x lens). Heat mediated antigen retrieval with Tris-EDTA buffer (pH 9.0).



Various lysates were subjected to SDS PAGE followed by western blot with 67583-1-Ig (HINT1 antibody) at dilution of 1:2000 incubated at room temperature for 1.5 hours.



Immunohistochemical analysis of paraffin-embedded human breast cancer tissue slide using 67583-1-Ig (HINT1 antibody) at dilution of 1:200 (under 40x lens). Heat mediated antigen retrieval with Tris-EDTA buffer (pH 9.0).



Immunofluorescent analysis of (-20°C Ethanol) fixed HeLa cells using HINT1 antibody (67583-1-Ig, Clone: 1G3E4) at dilution of 1:400 and CoraLite®488-Conjugated AffiniPure Goat Anti-Mouse IgG(H+L).