

À des fins de recherche uniquement

Anticorps Monoclonal anti-PHGDH

Numéro de catalogue: 67591-1-Ig **1 Publications**



Informations de base

Numéro de catalogue: 67591-1-Ig	Numéro d'acquisition GenBank: BC000303	Méthode de purification: Purification par protéine G
Taille: 150ul , Concentration: 1100 µg/ml by Nanodrop and 500 µg/ml by Bradford method using BSA as the standard;	Identification du gène (NCBI): 26227	CloneNo.: 1E8B8
Hôte: Mouse	Nom complet: phosphoglycerate dehydrogenase	Dilutions recommandées: WB 1:5000-1:50000 IF 1:200-1:800
Isotype: IgG1	MW calculé: 57 kDa	
Immunogen Catalog Number: AG6877	MW observés: 57 kDa	

Applications

Applications testées:

IF, WB, ELISA

Demandes citées:

WB

Spécificité de l'espèce:

Humain, rat, souris

Espèces citées:

Humain

Contrôles positifs:

WB : cellules HeLa, cellules HEK-293, cellules HepG2, cellules HSC-T6, cellules Jurkat, cellules K-562, cellules NIH/3T3

IF : cellules HeLa,

Informations générales

PHGDH(D-3-phosphoglycerate dehydrogenase) is also named as 3-PGDH, PGDH3 and belongs to the D-isomer specific 2-hydroxyacid dehydrogenase family. It catalyzes the transition of 3-phosphoglycerate into 3-phosphohydroxypyruvate, which is the first and rate-limiting step in the phosphorylated pathway of serine biosynthesis, using NAD⁺/NADH as a cofactor. 3-PGDH deficiency is a rare recessive inborn error in the biosynthesis of the amino acid L-serine characterized clinically by congenital microcephaly, psychomotor retardation, and intractable seizures(PMID:19235232).

Publications notables

Autrice	Pubmed ID	Journal	Application
Younging Zhu	35081364	Mol Cell	WB

Stockage

Stockage:

Stocker à -20 °C

Tampon de stockage:

PBS avec azoture de sodium à 0,02 % et glycérol à 50 % pH 7,3

L'aliquotage n'est pas nécessaire pour le stockage à -20C

***** Les 20ul contiennent 0,1% de BSA.**

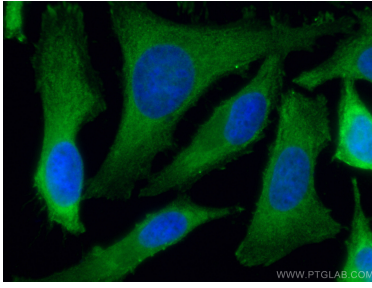
For technical support and original validation data for this product please contact:

T: 1 (888) 4PTGLAB (1-888-478-4522) (toll free in USA), or 1(312) 455-8498 (outside USA)

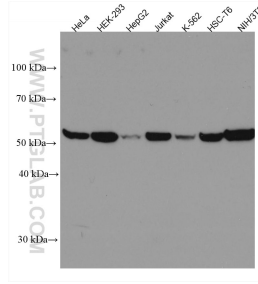
E: proteintech@ptglab.com
W: ptglab.com

This product is exclusively available under Proteintech Group brand and is not available to purchase from any other manufacturer.

Données de validation sélectionnées



Immunofluorescent analysis of (-20°C Ethanol) fixed HeLa cells using PHGDH antibody (67591-1-Ig, Clone: 1E8B8) at dilution of 1:400 and CoraLite®488-Conjugated AffiniPure Goat Anti-Mouse IgG(H+L).



Various lysates were subjected to SDS PAGE followed by western blot with 67591-1-Ig (PHGDH antibody) at dilution of 1:10000 incubated at room temperature for 1.5 hours.