

À des fins de recherche uniquement

Anticorps Monoclonal anti-TERF1

Numéro de catalogue: 67592-1-Ig



Informations de base

Numéro de catalogue: 67592-1-Ig	Numéro d'acquisition GenBank: BC029378	Méthode de purification: Purification par protéine G
Taille: 150ul , Concentration: 1700 µg/ml by Nanodrop and 1000 µg/ml by Bradford method using BSA as the standard;	Identification du gène (NCBI): 7013	CloneNo.: 1D10G4
Hôte: Mouse	Nom complet: telomeric repeat binding factor (NIMA-interacting) 1	Dilutions recommandées: WB 1:1000-1:6000
Isotype: IgG1	MW calculé 439 aa, 50 kDa	
Immunogen Catalog Number: AG12540	MW observés: 48-50 kDa	

Applications

Applications testées: WB, ELISA	Contrôles positifs: WB : cellules K-562, cellules HEK-293, cellules Jurkat
Spécificité de l'espèce: Humain, rat, souris	

Informations générales

Telomeres are nucleoprotein complexes located at chromosome ends that consist of tandem arrays of TTAGGG repeats bound to specific proteins. Telomeres protect chromosome ends from degradation and end-to-end fusions, prevent activation of DNA damage checkpoints, and modulate the maintenance of telomeric DNA by telomerase. TERF1 (telomeric repeat-binding factor 1) binds the telomeric double-stranded TTAGGG repeat and negatively regulates telomere length. It's one component of the shelterin complex, which involved in the regulation of telomere length and protection.

Stockage

Stockage:
Stocker à -20 °C.
Tampon de stockage:
PBS avec azoture de sodium à 0,1 % et glycérol à 50 % pH 7,3
L'aliquotage n'est pas nécessaire pour le stockage à -20C

*** Les 20ul contiennent 0,1% de BSA.

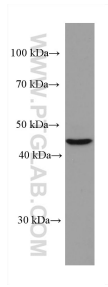
For technical support and original validation data for this product please contact:

T: 1 (888) 4PTGLAB (1-888-478-4522) (toll free
in USA), or 1(312) 455-8498 (outside USA)

E: proteintech@ptglab.com
W: ptglab.com

This product is exclusively available under Proteintech Group brand and is not available to purchase from any other manufacturer.

Données de validation sélectionnées



K-562 cells were subjected to SDS PAGE followed by western blot with 67592-1-Ig (TERF1 antibody) at dilution of 1:3000 incubated at room temperature for 1.5 hours.