

À des fins de recherche uniquement

Anticorps Monoclonal anti-Importin Beta



Numéro de catalogue: 67597-1-Ig

Informations de base

Numéro de catalogue: 67597-1-Ig	Numéro d'acquisition GenBank: BC003572	Méthode de purification: Purification par protéine A
Taille: 150ul, Concentration: 1500 µg/ml by Nanodrop and 780 µg/ml by Bradford method using BSA as the standard;	Identification du gène (NCBI): 3837	CloneNo.: 1A12B1
Hôte: Mouse	Nom complet: karyopherin (importin) beta 1	Dilutions recommandées: WB 1:2000-1:6000 IHC 1:200-1:800
Isotype: IgG2b	MW calculé: 97 kDa	
Immunogen Catalog Number: AG23094	MW observés: 95-97 kDa	

Applications

Applications testées:
FC, IHC, WB, ELISA

Spécificité de l'espèce:
Humain

Remarque-IHC: il est suggéré de démasquer l'antigène avec un tampon de TE buffer pH 9.0; (*) À défaut, le démasquage de l'antigène peut être effectué avec un tampon citrate pH 6.0.

Contrôles positifs:

WB : cellules HeLa, cellules HepG2, cellules Jurkat, cellules K-562

IHC : tissu de cancer du côlon humain,

Informations générales

Importin beta1, also known karyopherin beta or KPNB1, is a nuclear transport receptor that plays a key role in the nuclear import process. Importin beta1 and importin alpha work in concert to transport cargo into the nucleus, functioning as an essential component of the classical nuclear localization signal (NLS) pathway. Elevated expression of importin beta1 has been found in cervical tumors. (22125623)

Stockage

Stockage:
Stocker à -20°C. Stable pendant un an après l'expédition.

Tampon de stockage:
PBS avec azoture de sodium à 0,02 % et glycérol à 50 % pH 7,3

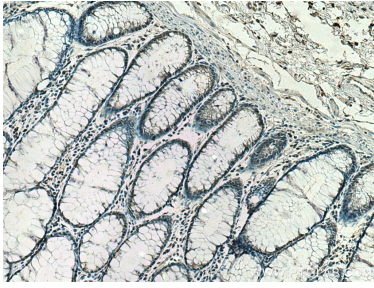
L'aliquotage n'est pas nécessaire pour le stockage à -20C

*** Les 20ul contiennent 0,1% de BSA.

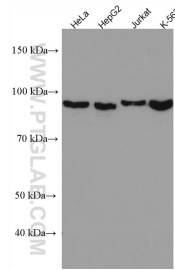
For technical support and original validation data for this product please contact:
T: 1 (888) 4PTGLAB (1-888-478-4522) (toll free in USA), or 1(312) 455-8498 (outside USA)
E: proteintech@ptglab.com
W: ptglab.com

This product is exclusively available under Proteintech Group brand and is not available to purchase from any other manufacturer.

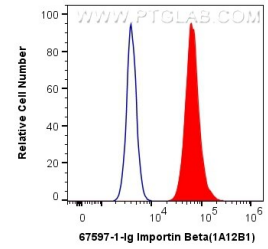
Données de validation sélectionnées



Immunohistochemical analysis of paraffin-embedded human colon cancer tissue slide using 67597-1-Ig (Importin beta antibody) at dilution of 1:400 (under 10x lens). Heat mediated antigen retrieval with Tris-EDTA buffer (pH 9.0).



Various lysates were subjected to SDS PAGE followed by western blot with 67597-1-Ig (Importin beta antibody) at dilution of 1:5000 incubated at room temperature for 1.5 hours.



1X10⁶ Jurkat cells were intracellularly stained with 0.5 ug Anti-Human Importin Beta (67597-1-Ig, Clone:1A12B1) and Coralite@488-Conjugated AffiniPure Goat Anti-Mouse IgG(H+L) at dilution 1:1000 (red), or 0.5 ug Control Antibody. Cells were fixed with 4% PFA and permeabilized with Flow Cytometry Perm Buffer (PF00011-C).