

À des fins de recherche uniquement

# Anticorps Monoclonal anti-GSS

Numéro de catalogue: 67598-1-Ig

Phare

1 Publications



## Informations de base

Numéro de catalogue: 67598-1-Ig	Numéro d'acquisition GenBank: BC007927	Méthode de purification: Purification par protéine A
Taille: 150ul , Concentration: 2400 µg/ml by Nanodrop and 1000 µg/ml by Bradford method using BSA as the standard;	Identification du gène (NCBI): 2937	CloneNo.: 1F12G1
Hôte: Mouse	Nom complet: glutathione synthetase	Dilutions recommandées: WB 1:5000-1:50000 IHC 1:500-1:2000 IF 1:200-1:800
Isotype: IgG1	MW calculé: 474 aa, 52 kDa	
Immunogen Catalog Number: AG8354	MW observés: 52 kDa	

## Applications

### Applications testées:

IF, IHC, WB, ELISA

### Demandes citées:

WB

### Spécificité de l'espèce:

Humain, porc, rat, souris

### Espèces citées:

Humain

**Remarque-IHC: il est suggéré de démasquer l'antigène avec un tampon de TE buffer pH 9,0; (\*) À défaut, le démasquage de l'antigène peut être effectué avec un tampon citrate pH 6,0.**

### Contrôles positifs:

WB : cellules CHO, cellules HEK-293, cellules HeLa, cellules HepG2, cellules Jurkat, tissu hépatique de rat

IHC : tissu de cancer du foie humain,

IF : cellules HeLa,

## Informations générales

### Publications notables

Autrice	Pubmed ID	Journal	Application
Xiaohan Jin	36243112	J Biol Chem	WB

## Stockage

### Stockage:

Stocker à -20°C. Stable pendant un an après l'expédition.

### Tampon de stockage:

PBS avec azoture de sodium à 0,02 % et glycérol à 50 % pH 7,3

L'aliquotage n'est pas nécessaire pour le stockage à -20C

\*\*\* Les 20ul contiennent 0,1% de BSA.

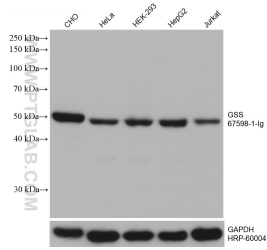
For technical support and original validation data for this product please contact:

T: 1 (888) 4PTGLAB (1-888-478-4522) (toll free  
in USA), or 1(312) 455-8498 (outside USA)

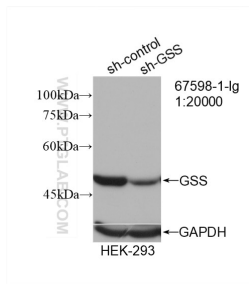
E: proteintech@ptglab.com  
W: ptglab.com

This product is exclusively available under Proteintech Group brand and is not available to purchase from any other manufacturer.

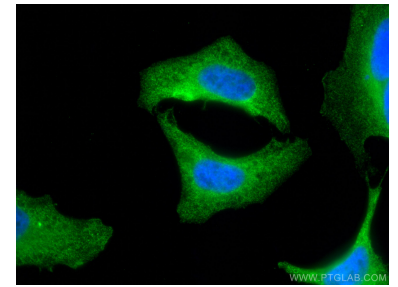
## Données de validation sélectionnées



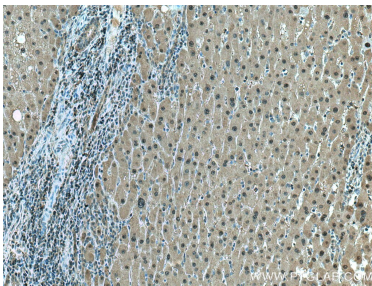
Various lysates were subjected to SDS PAGE followed by western blot with 67598-1-Ig (GSS antibody) at dilution of 1:20000 incubated at room temperature for 1.5 hours. The membrane was stripped and reblotted with HRP-conjugated GAPDH Monoclonal antibody (HRP-60004) as loading control.



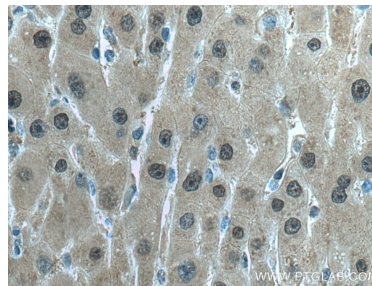
WB result of GSS antibody (67598-1-Ig; 1:20000; incubated at room temperature for 1.5 hours) with sh-Control and sh-GSS transfected HEK-293 cells.



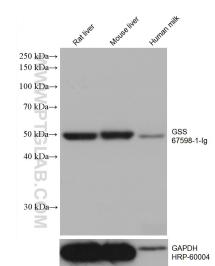
Immunofluorescent analysis of (4% PFA) fixed HeLa cells using GSS antibody (67598-1-Ig, Clone: 1F12G1) at dilution of 1:400 and CoraLite@488-Conjugated AffiniPure Goat Anti-Mouse IgG(H+L).



Immunohistochemical analysis of paraffin-embedded human liver cancer tissue slide using 67598-1-Ig (GSS antibody) at dilution of 1:1000 (under 10x lens). Heat mediated antigen retrieval with Tris-EDTA buffer (pH 9.0).



Immunohistochemical analysis of paraffin-embedded human liver cancer tissue slide using 67598-1-Ig (GSS antibody) at dilution of 1:1000 (under 40x lens). Heat mediated antigen retrieval with Tris-EDTA buffer (pH 9.0).



Various lysates were subjected to SDS PAGE followed by western blot with 67598-1-Ig (GSS antibody) at dilution of 1:20000 incubated at room temperature for 1.5 hours. The membrane was stripped and reblotted with HRP-conjugated GAPDH Monoclonal antibody (HRP-60004) as loading control.