

À des fins de recherche uniquement

Anticorps Monoclonal anti-SDHB

Numéro de catalogue: 67600-1-Ig

Phare

2 Publications



Informations de base

Numéro de catalogue: 67600-1-Ig	Numéro d'acquisition GenBank: BC007840	Méthode de purification: Purification par protéine A
Taille: 150ul , Concentration: 1000 µg/ml by Bradford method using BSA as the standard;	Identification du gène (NCBI): 6390	CloneNo.: 1A2A5
Hôte: Mouse	Nom complet: succinate dehydrogenase complex, subunit B, iron sulfur (Ip)	Dilutions recommandées: WB 1:5000-1:50000 IHC 1:500-1:2000 IF 1:200-1:800
Isotype: IgG1	MW calculé 32 kDa	
Immunogen Catalog Number: AG29868	MW observés: 28-32 kDa	

Applications

Applications testées:

IF, IHC, WB, ELISA

Demandes citées:

WB

Spécificité de l'espèce:

Humain, rat, souris

Espèces citées:

souris

Remarque-IHC: il est suggéré de démasquer l'antigène avec un tampon de TE buffer pH 9,0; (*) A défaut, 'le démasquage de l'antigène peut être 'effectué avec un tampon citrate pH 6,0.

Contrôles positifs:

WB : cellules U2OS, cellules HEK-293, cellules HeLa, cellules HepG2, cellules HSC-T6, cellules K-562, cellules Neuro-2a, cellules NIH/3T3

IHC : tissu de cancer du foie humain,

IF : tissu de cancer du foie humain,

Informations générales

SDHB(Succinate dehydrogenase [ubiquinone] iron-sulfur subunit, mitochondrial) is also named as SDH, SDH1 and belongs to the succinate dehydrogenase/fumarate reductase iron-sulfur protein family. The SDHD, SDHB, and SDHC genes encode subunits of mitochondrial complex II (succinate dehydrogenase). Mitochondrial complex II is a heterotetrameric complex involved in the aerobic electron transport chain and catalyses the oxidation of succinate to fumarate (Krebs cycle) with transport of electrons to the ubiquinone pool. SDHA and SDHB are the hydrophilic catalytic part of the complex and are highly conserved(J Med Genet 2004;41:e99). Defects in SDHB are a cause of susceptibility to pheochromocytoma (PCC), paragangliomas type 4 (PGL4), paraganglioma and gastric stromal sarcoma (PGSS) and Cowden-like syndrome (CWDLS).

Publications notables

Autrice	Pubmed ID	Journal	Application
Min Zheng	36257219	Phytomedicine	WB
Long Cheng	35445769	Phytother Res	WB

Stockage

Stockage:

Stocker à -20°C. Stable pendant un an après l'expédition.

Tampon de stockage:

PBS avec azoture de sodium à 0,02 % et glycérol à 50 % pH 7,3

L'aliquotage n'est pas nécessaire pour le stockage à -20C

*** Les 20ul contiennent 0,1% de BSA.

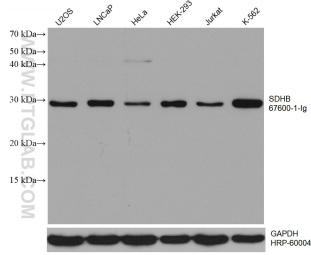
For technical support and original validation data for this product please contact:

T: 1 (888) 4PTGLAB (1-888-478-4522) (toll free in USA), or 1(312) 455-8498 (outside USA)

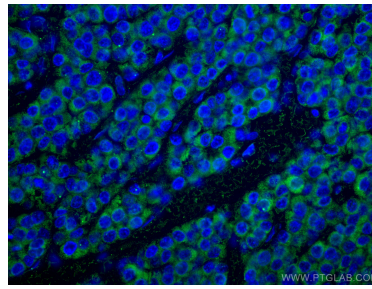
E: proteintech@ptglab.com
W: ptglab.com

This product is exclusively available under Proteintech Group brand and is not available to purchase from any other manufacturer.

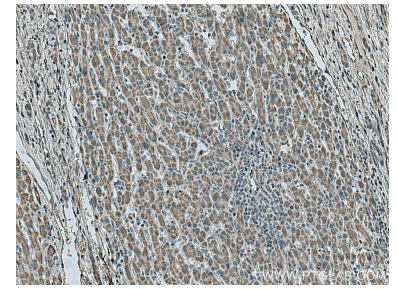
Données de validation sélectionnées



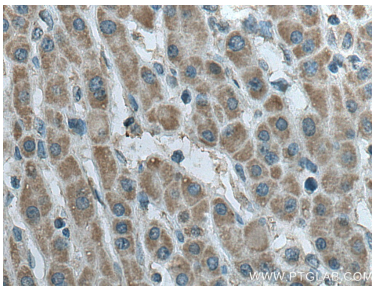
Various lysates were subjected to SDS PAGE followed by western blot with 67600-1-Ig (SDHB antibody) at dilution of 1:15000 incubated at room temperature for 1.5 hours. The membrane was stripped and reblotted with HRP-conjugated GAPDH Monoclonal antibody (HRP-60004) as loading control.



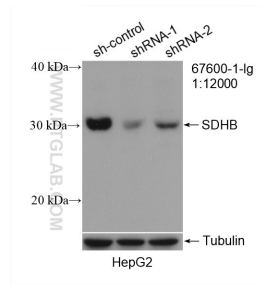
Immunofluorescent analysis of (4% PFA) fixed human liver cancer tissue using SDHB antibody (67600-1-Ig, Clone: 1A2A5) at dilution of 1:400 and CoraLite®488-Conjugated AffiniPure Goat Anti-Mouse IgG(H+L).



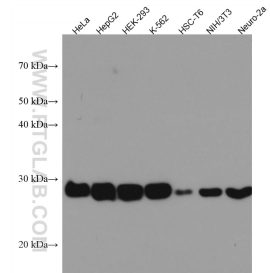
Immunohistochemical analysis of paraffin-embedded human liver cancer tissue slide using 67600-1-Ig (SDHB antibody) at dilution of 1:1000 (under 10x lens). Heat mediated antigen retrieval with Tris-EDTA buffer (pH 9.0).



Immunohistochemical analysis of paraffin-embedded human liver cancer tissue slide using 67600-1-Ig (SDHB antibody) at dilution of 1:1000 (under 40x lens). Heat mediated antigen retrieval with Tris-EDTA buffer (pH 9.0).



WB result of SDHB antibody (67600-1-Ig; 1:12000; incubated at room temperature for 1.5 hours) with sh-Control and sh-SDHB transfected HepG2 cells.



Various lysates were subjected to SDS PAGE followed by western blot with 67600-1-Ig (SDHB antibody) at dilution of 1:10000 incubated at room temperature for 1.5 hours.