

À des fins de recherche uniquement

Anticorps Monoclonal anti-CREB3L1,OASIS



Numéro de catalogue:67617-1-Ig

Informations de base

Numéro de catalogue: 67617-1-Ig	Numéro d'acquisition GenBank: BC015781	Méthode de purification: Purification par protéine G
Taille: 150ul , Concentration: 1700 µg/ml by Nanodrop and 1000 µg/ml by Bradford method using BSA as the standard;	Identification du gène (NCBI): 90993	CloneNo.: 2B5B4
Hôte: Mouse	Nom complet: cAMP responsive element binding protein 3-like 1	Dilutions recommandées: WB 1:20000-1:100000
Isotype: IgG1	MW calculé: 57 kDa	
Immunogen Catalog Number: AG28042	MW observés: 58 kDa	

Applications

Applications testées:

FC, WB, ELISA

Spécificité de l'espèce:

Humain, rat, souris

Contrôles positifs:

WB : cellules HepG2, cellules 4T1, cellules A375, cellules A549, cellules HeLa, cellules HSC-T6, cellules NIH/3T3

Informations générales

Cyclic AMP-responsive element-binding protein 3-like protein 1(CREB3L1) belongs to a family of transcription factors that are synthesized as membrane-bound precursors in the endoplasmic reticulum (ER) and then transported to the Golgi where they are activated through regulated intramembrane proteolysis (RIP). Also it participates in ER-stress response in astrocytes in the central nervous system. It may have a role in gliosis, and involves in activation of transcription through box-B element but not CRE. CREB3L1 acts as a transcription repressor in proliferation of virus-infected cell. The full-length precursor form (approximately 84 kDa) of CREB3L1 and the matured form of CREB3L1 is 58 kDa. (PMID: 20668028)

Stockage

Stockage:

Stocker à -20°C. Stable pendant un an après l'expédition.

Tampon de stockage:

PBS avec azoture de sodium à 0,02 % et glycérol à 50 % pH 7,3

L'aliquotage n'est pas nécessaire pour le stockage à -20C

*** Les 20ul contiennent 0,1% de BSA.

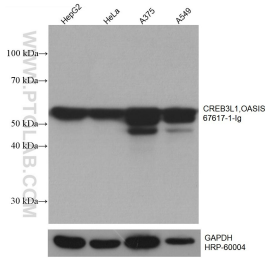
For technical support and original validation data for this product please contact:

T: 1 (888) 4PTGLAB (1-888-478-4522) (toll free in USA), or 1(312) 455-8498 (outside USA)

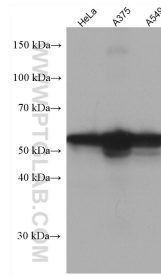
E: proteintech@ptglab.com
W: ptglab.com

This product is exclusively available under Proteintech Group brand and is not available to purchase from any other manufacturer.

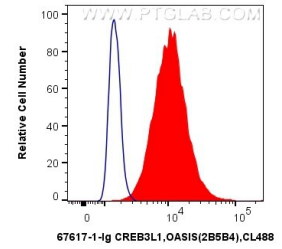
Données de validation sélectionnées



Various lysates were subjected to SDS PAGE followed by western blot with 67617-1-Ig (CREB3L1, OASIS antibody) at dilution of 1:50000 incubated at room temperature for 1.5 hours. The membrane was stripped and reblotted with HRP-conjugated GAPDH Monoclonal antibody (HRP-60004) as loading control.



Various lysates were subjected to SDS PAGE followed by western blot with 67617-1-Ig (CREB3L1, OASIS antibody) at dilution of 1:5000 incubated at room temperature for 1.5 hours.



1X10⁶ HepG2 cells were intracellularly stained with 0.5 ug Anti-Human CREB3L1, OASIS (67617-1-Ig, Clone:2B5B4) and CoraLite®488-Conjugated AffiniPure Goat Anti-Mouse IgG(H+L) at dilution 1:1000 (red), or 0.5 ug Control Antibody. Cells were fixed with 4% PFA and permeabilized with Flow Cytometry Perm Buffer (PF00011-C).