

À des fins de recherche uniquement

Anticorps Monoclonal anti-WASF3

Numéro de catalogue: 67620-1-Ig



Informations de base

Numéro de catalogue: 67620-1-Ig	Numéro d'acquisition GenBank: BC050283	Méthode de purification: Purification par protéine G
Taille: 150ul , Concentration: 500 µg/ml by Bradford method using BSA as the standard;	Identification du gène (NCBI): 10810	CloneNo.: 3B7D10
Hôte: Mouse	Nom complet: WAS protein family, member 3	Dilutions recommandées: WB 1:5000-1:50000 IHC 1:500-1:2000 IF 1:200-1:800
Isotype: IgG1	MW calculé: 55 kDa	
Immunogen Catalog Number: AG29991	MW observés: 50-55 and 66-70 kDa	

Applications

Applications testées:

IF, IHC, WB, ELISA

Spécificité de l'espèce:

Humain, Lapin, porc, rat, souris

Remarque-IHC: il est suggéré de démasquer l'antigène avec un tampon de TE buffer pH 9.0; (*) À défaut, 'le démasquage de l'antigène peut être effectué avec un tampon citrate pH 6,0.

Contrôles positifs:

WB : cellules U-251, tissu cérébral de lapin, tissu cérébral de porc, tissu cérébral de rat, tissu cérébral de souris, tissu de cervelet de porc, tissu de cervelet de rat, tissu de cervelet de souris

IHC : tissu de cancer du foie humain,

IF : tissu cérébral de souris, tissu de cancer du foie humain

Informations générales

WASF3, also named as WAVE3 or SCAR3, belongs to the SCAR/WAVE family. It plays a role in the regulation of cell morphology and cytoskeletal organization. WASF3 is associated with the movement, invasion and metastasis in different cancers such as breast cancer, gastric cancer and prostate cancer. It has been shown that WASF3 levels are elevated in advanced stage cancers compared to lower grade tumors and normal tissue. 67620-1-Ig antibody recognizes 50-55 kDa and 66-70 kDa protein similar to the papers. (PMID: 21544801, 15826941, 31038356, 27432794, 31542393)

Stockage

Stockage:

Stocker à -20°C. Stable pendant un an après l'expédition.

Tampon de stockage:

PBS avec azoture de sodium à 0,02 % et glycérol à 50 % pH 7,3

L'aliquotage n'est pas nécessaire pour le stockage à -20C

*** Les 20ul contiennent 0,1% de BSA.

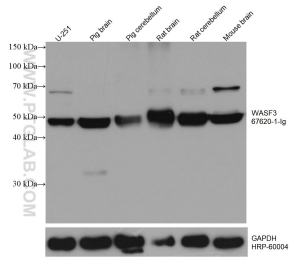
For technical support and original validation data for this product please contact:

T: 1 (888) 4PTGLAB (1-888-478-4522) (toll free in USA), or 1(312) 455-8498 (outside USA)

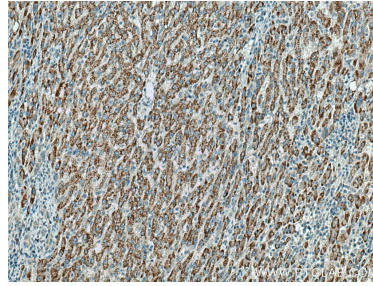
E: proteintech@ptglab.com
W: ptglab.com

This product is exclusively available under Proteintech Group brand and is not available to purchase from any other manufacturer.

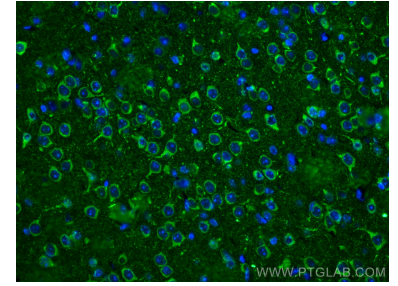
Données de validation sélectionnées



Various lysates were subjected to SDS PAGE followed by western blot with 67620-1-Ig (WASF3 antibody) at dilution of 1:40000 incubated at room temperature for 1.5 hours. The membrane was stripped and reblotted with HRP-conjugated GAPDH Monoclonal antibody (HRP-60004) as loading control.



Immunohistochemical analysis of paraffin-embedded human liver cancer tissue slide using 67620-1-Ig (WASF3 antibody) at dilution of 1:1000 (under 10x lens). Heat mediated antigen retrieval with Tris-EDTA buffer (pH 9.0).



Immunofluorescent analysis of (4% PFA) fixed mouse brain tissue using WASF3 antibody (67620-1-Ig, Clone: 3B7D10) at dilution of 1:400 and CoraLite®488-Conjugated AffiniPure Goat Anti-Mouse IgG(H+L).