

À des fins de recherche uniquement

# Anticorps Monoclonal anti-ICAM2

Numéro de catalogue: 67628-1-Ig



## Informations de base

Numéro de catalogue: 67628-1-Ig	Numéro d'acquisition GenBank: BC003097	Méthode de purification: Purification par protéine A
Taille: 150ul , Concentration: 1991 µg/ml by Nanodrop and 1000 µg/ml by Bradford method using BSA as the standard;	Identification du gène (NCBI): 3384	CloneNo.: 1H3C6
Hôte: Mouse	Nom complet: intercellular adhesion molecule 2	Dilutions recommandées: WB 1:1000-1:6000
Isotype: IgG2a	MW calculé 31 kDa	
Immunogen Catalog Number: AG29441	MW observés: 55-60 kDa	

## Applications

Applications testées: FC, WB, ELISA	Contrôles positifs: WB : plaquettes de sang périphérique humain, cellules Jurkat
Spécificité de l'espèce: Humain	

## Informations générales

ICAM2 is a cell adhesion protein having important roles in cell migration, especially during inflammation when leukocytes cross the endothelium. Initially described as a receptor for lymphocyte function-associated antigen-1 (LFA1), ICAM2 may play a role in lymphocyte recirculation by blocking LFA-1-dependent cell adhesion. It mediates adhesive interactions important for antigen-specific immune response, NK-cell mediated clearance, lymphocyte recirculation, and other cellular interactions important for immune response and surveillance.

## Stockage

Stockage:  
Stocker à -20 °C  
Tampon de stockage:  
PBS avec azoture de sodium à 0,02 % et glycérol à 50 % pH 7,3  
L'aliquotage n'est pas nécessaire pour le stockage à -20C

\*\*\* Les 20ul contiennent 0,1% de BSA.

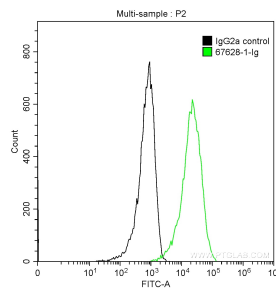
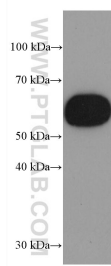
For technical support and original validation data for this product please contact:

T: 1 (888) 4PTGLAB (1-888-478-4522) (toll free  
in USA), or 1(312) 455-8498 (outside USA)

E: proteintech@ptglab.com  
W: ptglab.com

This product is exclusively available under Proteintech Group brand and is not available to purchase from any other manufacturer.

## Données de validation sélectionnées



human peripheral blood platelets were subjected to SDS PAGE followed by western blot with 67628-1-Ig (ICAM2 antibody) at dilution of 1:3000 incubated at room temperature for 1.5 hours.

$1 \times 10^6$  HUVEC cells were stained with 0.2  $\mu$ g Anti-Human ICAM2 (67628-1-Ig, Clone:1H3C6) and CoraLite®488-Conjugated AffiniPure Goat Anti-Mouse IgG(H+L) at dilution 1:1000 (green), or stained with 0.2  $\mu$ g mouse IgG2a isotype control and CoraLite®488-Conjugated AffiniPure Goat Anti-Mouse IgG(H+L) at dilution 1:1000 (black). Cells were fixed with 90% MeOH.