

À des fins de recherche uniquement

# Anticorps Monoclonal anti-PSME3

Numéro de catalogue: 67629-1-Ig



## Informations de base

Numéro de catalogue: 67629-1-Ig	Numéro d'acquisition GenBank: BC001423	Méthode de purification: Purification par protéine G
Taille: 150ul , Concentration: 2100 µg/ml by Nanodrop and 1000 µg/ml by Bradford method using BSA as the standard;	Identification du gène (NCBI): 10197	CloneNo.: 2A8E8
Hôte: Mouse	Nom complet: proteasome (prosome, macropain) activator subunit 3 (PA28 gamma; Ki)	Dilutions recommandées: WB 1:1000-1:6000 IHC 1:250-1:1000
Isotype: IgG1	MW calculé 30 kDa	
Immunogen Catalog Number: AG6716	MW observés: 32 kDa	

## Applications

### Applications testées:

IHC, WB, ELISA

### Spécificité de l'espèce:

Humain, rat

**Remarque-IHC: il est suggéré de démasquer l'antigène avec un tampon de TE buffer pH 9,0; (\*) À défaut, le démasquage de l'antigène peut être effectué avec un tampon citrate pH 6,0.**

### Contrôles positifs:

WB : cellules LNCaP, cellules HeLa, cellules HepG2, cellules HSC-T6, cellules K-562

IHC : tissu de cancer du foie humain,

## Informations générales

PSME3 gene encodes proteasome activator complex subunit 3, which is also called REG-gamma or PA28-gamma. REG-gamma activates the trypsin-like catalytic subunit of the proteasome thus is a proteasome regulator. MDM2-TP53 interaction which promotes ubiquitination- and MDM2-dependent proteasomal degradation of TP53, may be promoted by REG-gamma resulting in inhibited apoptosis after DNA damage. REG-gamma may also be involved in cell cycle regulation.

## Stockage

### Stockage:

Stocker à -20°C. Stable pendant un an après l'expédition.

### Tampon de stockage:

PBS avec azoture de sodium à 0,02 % et glycérol à 50 % pH 7,3

L'aliquotage n'est pas nécessaire pour le stockage à -20C

\*\*\* Les 20ul contiennent 0,1% de BSA.

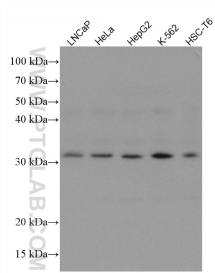
For technical support and original validation data for this product please contact:

T: 1 (888) 4PTGLAB (1-888-478-4522) (toll free  
in USA), or 1(312) 455-8498 (outside USA)

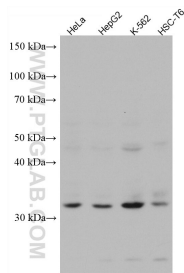
E: proteintech@ptglab.com  
W: ptglab.com

This product is exclusively available under Proteintech Group brand and is not available to purchase from any other manufacturer.

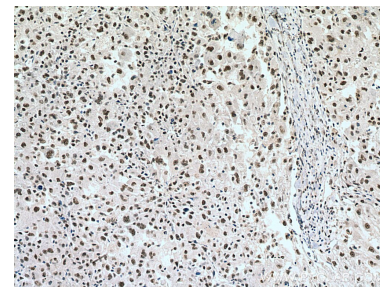
## Données de validation sélectionnées



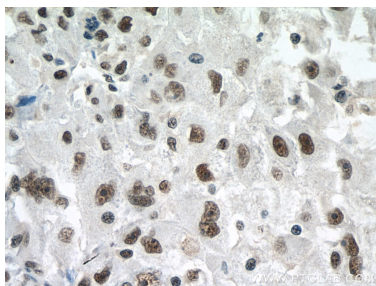
Various lysates were subjected to SDS PAGE followed by western blot with 67629-1-Ig (PSME3 antibody) at dilution of 1:3000 incubated at room temperature for 1.5 hours.



Various lysates were subjected to SDS PAGE followed by western blot with 67629-1-Ig (PSME3 antibody) at dilution of 1:10000 incubated at room temperature for 1.5 hours.



Immunohistochemical analysis of paraffin-embedded human liver cancer tissue slide using 67629-1-Ig (PSME3 antibody) at dilution of 1:500 (under 10x lens). Heat mediated antigen retrieval with Tris-EDTA buffer (pH 9.0).



Immunohistochemical analysis of paraffin-embedded human liver cancer tissue slide using 67629-1-Ig (PSME3 antibody) at dilution of 1:500 (under 40x lens). Heat mediated antigen retrieval with Tris-EDTA buffer (pH 9.0).