

À des fins de recherche uniquement

# Anticorps Monoclonal anti-CPS1

Numéro de catalogue: 67630-1-Ig



## Informations de base

Numéro de catalogue: 67630-1-Ig	Numéro d'acquisition GenBank: BC140943	Méthode de purification: Purification par protéine G
Taille: 150ul, Concentration: 2300 µg/ml by Nanodrop and 1000 µg/ml by Bradford method using BSA as the standard;	Identification du gène (NCBI): 1373	CloneNo.: 2A12A4
Hôte: Mouse	Nom complet: carbamoyl-phosphate synthetase 1, mitochondrial	Dilutions recommandées: WB 1:500-1:8000
Isotype: IgG1	MW calculé: 165 kDa	
	MW observés: 140-165 kDa	

## Applications

Applications testées:  
WB, ELISA

Spécificité de l'espèce:  
Humain, rat, souris

Contrôles positifs:

WB : tissu hépatique de souris, cellules HeLa, tissu  
hépatique de rat

## Informations générales

CPS1 is an enzyme that catalyzes the first committed step of the hepatic urea cycle, which is important in the removal of excess urea from cells. Expressed primarily in the liver and small intestine, CPS1 can be used as a marker for mitochondria in these tissues. In addition, CPS1 expression appears to be lost in adenocarcinomas of the small intestine.

## Stockage

Stockage:  
Stocker à -20 °C

Tampon de stockage:  
PBS avec azoture de sodium à 0,02 % et glycérol à 50 % pH 7,3

L'aliquotage n'est pas nécessaire pour le stockage à -20C

\*\*\* Les 20ul contiennent 0,1% de BSA.

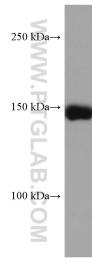
For technical support and original validation data for this product please contact:

T: 1 (888) 4PTGLAB (1-888-478-4522) (toll free  
in USA), or 1(312) 455-8498 (outside USA)

E: [proteintech@ptglab.com](mailto:proteintech@ptglab.com)  
W: [ptglab.com](http://ptglab.com)

This product is exclusively available under Proteintech Group brand and is not available to purchase from any other manufacturer.

## Données de validation sélectionnées



mouse liver tissue were subjected to SDS PAGE followed by western blot with 67630-1-Ig (CPS1 antibody) at dilution of 1:5000 incubated at room temperature for 1.5 hours.