

À des fins de recherche uniquement

Anticorps Monoclonal anti-Ch-TOG

Numéro de catalogue: 67631-1-Ig



Informations de base

Numéro de catalogue: 67631-1-Ig	Numéro d'acquisition GenBank: BC120869	Méthode de purification: Purification par protéine G
Taille: 150ul , Concentration: 1000 µg/ml by Nanodrop and 500 µg/ml by Bradford method using BSA as the standard;	Identification du gène (NCBI): 9793	CloneNo.: 1H5G1
Hôte: Mouse	Nom complet: cytoskeleton associated protein 5	Dilutions recommandées: WB 1:5000-1:50000 IF 1:200-1:800
Isotype: IgG1	MW observés: 220-240 kDa	
Immunogen Catalog Number: AG28770		

Applications

Applications testées: IF, WB, ELISA	Contrôles positifs:
Spécificité de l'espèce: Humain, porc, rat, souris	WB : tissu cérébral de porc, cellules HeLa, cellules HepG2, cellules NCCIT, tissu cérébral de rat, tissu cérébral de souris
	IF : cellules HepG2,

Informations générales

Ch-TOG (colonic hepatic tumor-overexpressed gene), also known as XMAP215 or CKAP5, is a microtubule polymerase which can promotes cytoplasmic microtubule nucleation and elongation. Through interacting with Aurora-A and TACC3, it plays a major role in organizing spindle poles.

Stockage

Stockage:
Stocker à -20°C. Stable pendant un an après l'expédition.
Tampon de stockage:
PBS avec azoture de sodium à 0,02 % et glycérol à 50 % pH 7,3
L'aliquotage n'est pas nécessaire pour le stockage à -20C

***** Les 20ul contiennent 0,1% de BSA.**

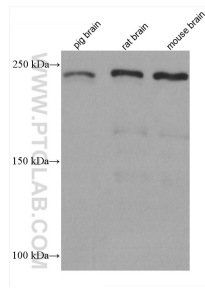
For technical support and original validation data for this product please contact:

T: 1 (888) 4PTGLAB (1-888-478-4522) (toll free in USA), or 1(312) 455-8498 (outside USA)

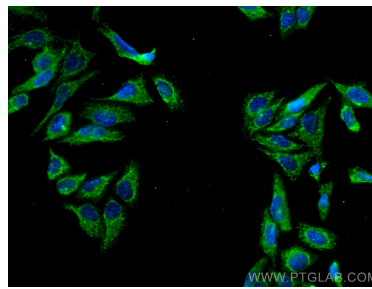
E: proteintech@ptglab.com
W: ptglab.com

This product is exclusively available under Proteintech Group brand and is not available to purchase from any other manufacturer.

Données de validation sélectionnées



Various lysates were subjected to SDS PAGE followed by western blot with 67631-1-Ig (CKAP5 antibody) at dilution of 1:10000 incubated at room temperature for 1.5 hours.



Immunofluorescent analysis of (-20°C Methanol) fixed HepG2 cells using Ch-TOG antibody (67631-1-Ig, Clone: 1H5G1) at dilution of 1:400 and CoraLite®488-Conjugated AffiniPure Goat Anti-Mouse IgG(H+L).