

À des fins de recherche uniquement

# Anticorps Monoclonal anti-CCDC6

Numéro de catalogue: 67637-1-Ig



## Informations de base

|   |  |   |
|---|--|---|
| <b>Numéro de catalogue:</b><br>67637-1-Ig   | <b>Numéro d'acquisition GenBank:</b><br>BC036757       | <b>Méthode de purification:</b><br>Purification par protéine A        |
| <b>Taille:</b><br>150ul, Concentration: 900 µg/ml by Nanodrop and 500 µg/ml by Bradford method using BSA as the standard; | <b>Identification du gène (NCBI):</b><br>8030          | <b>CloneNo.:</b><br>1D6A8   |
| <b>Hôte:</b><br>Mouse   | <b>Nom complet:</b><br>coiled-coil domain containing 6 | <b>Dilutions recommandées:</b><br>WB 1:5000-1:50000<br>IF 1:200-1:800 |
| <b>Isotype:</b><br>IgG1   | <b>MW calculé</b><br>474 aa, 53 kDa                    |   |
| <b>Immunogen Catalog Number:</b><br>AG6952  | <b>MW observés:</b><br>65 kDa                          |   |

## Applications

**Applications testées:**  
IF, WB, ELISA

**Spécificité de l'espèce:**  
Humain, rat, souris

### Contrôles positifs:

**WB :** cellules MCF-7, cellules A549, cellules HeLa, cellules HepG2, cellules HSC-T6, cellules Jurkat, cellules K-562, cellules LNCaP, cellules NIH/3T3, cellules U2OS

**IF :** cellules MCF-7,

## Informations générales

### Stockage

**Stockage:**  
Stocker à -20°C. Stable pendant un an après l'expédition.

**Tampon de stockage:**  
PBS avec azoture de sodium à 0,02 % et glycérol à 50 % pH 7,3

L'aliquotage n'est pas nécessaire pour le stockage à -20C

\*\*\* Les 20ul contiennent 0,1% de BSA.

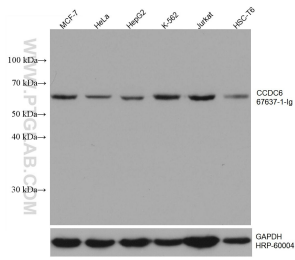
For technical support and original validation data for this product please contact:

T: 1 (888) 4PTGLAB (1-888-478-4522) (toll free in USA), or 1(312) 455-8498 (outside USA)

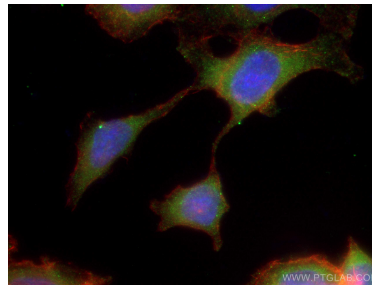
E: [proteintech@ptglab.com](mailto:proteintech@ptglab.com)  
W: [ptglab.com](http://ptglab.com)

This product is exclusively available under Proteintech Group brand and is not available to purchase from any other manufacturer.

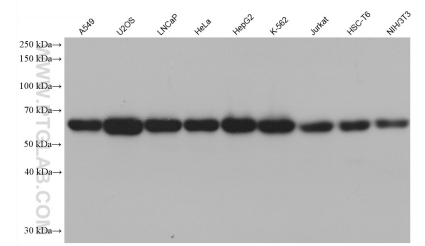
## Données de validation sélectionnées



Various lysates were subjected to SDS PAGE followed by western blot with 67637-1-Ig (CCDC6 antibody) at dilution of 1:10000 incubated at room temperature for 1.5 hours. The membrane was stripped and reblotted with HRP-conjugated GAPDH Monoclonal antibody (HRP-60004) as loading control.



Immunofluorescent analysis of (-20°C Ethanol) fixed MCF-7 cells using CCDC6 antibody (67637-1-Ig, Clone: 1D6A8) at dilution of 1:400 and CoraLite® 488-Conjugated AffiniPure Goat Anti-Mouse IgG(H+L), CL594-Phalloidin (red).



Various lysates were subjected to SDS PAGE followed by western blot with 67637-1-Ig (CCDC6 antibody) at dilution of 1:10000 incubated at room temperature for 1.5 hours.