

À des fins de recherche uniquement

# Anticorps Monoclonal anti-TCF7L1/TCF7L2



Numéro de catalogue: 67652-1-Ig

## Informations de base

|  |  |   |
|--|--|---|
| Numéro de catalogue:<br>67652-1-Ig   | Numéro d'acquisition GenBank:<br>BC058894                                | Méthode de purification:<br>Purification par protéine A |
| Taille:<br>150ul, Concentration: 2100 µg/ml by Nanodrop and 1000 µg/ml by Bradford method using BSA as the standard; | Identification du gène (NCBI):<br>83439                                  | CloneNo.:<br>2B2D12                                     |
| Hôte:<br>Mouse   | Nom complet:<br>transcription factor 7-like 1 (T-cell specific, HMG-box) | Dilutions recommandées:<br>WB 1:20000-1:100000          |
| Isotype:<br>IgG2b  | MW calculé:<br>63 kDa  |   |
| Immunogen Catalog Number:<br>AG28954   | MW observés:<br>70 kDa   |   |

## Applications

Applications testées:  
WB, ELISA  
Spécificité de l'espèce:  
Humain, souris

### Contrôles positifs:

WB : cellules HEK-293, cellules A431, cellules HeLa, cellules JAR, cellules NCCIT, cellules NIH/3T3

## Informations générales

TCF7L1 is one of TCF/LEF transcription factors that are mediators of the Wnt signaling pathway and are antagonized by the TGF-beta signaling pathway. It binds to DNA and acts as a repressor in the absence of CTNNB1, and as an activator in its presence. It's necessary for the terminal differentiation of epidermal cells, the formation of keratohyalin granules and the development of the barrier function of the epidermis. This antibody raised against 1-200aa of human TCF7L1 can also react with TCF7L2.

## Stockage

Stockage:  
Stocker à -20 °C  
Tampon de stockage:  
PBS avec azoture de sodium à 0,02 % et glycérol à 50 % pH 7,3  
L'aliquotage n'est pas nécessaire pour le stockage à -20C

\*\*\* Les 20ul contiennent 0,1% de BSA.

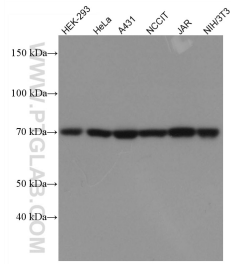
For technical support and original validation data for this product please contact:

T: 1 (888) 4PTGLAB (1-888-478-4522) (toll free in USA), or 1(312) 455-8498 (outside USA)

E: proteintech@ptglab.com  
W: ptglab.com

This product is exclusively available under Proteintech Group brand and is not available to purchase from any other manufacturer.

## Données de validation sélectionnées



Various lysates were subjected to SDS PAGE followed by western blot with 67652-1-Ig (TCF7L1/TCF7L2 antibody) at dilution of 1:50000 incubated at room temperature for 1.5 hours.