

À des fins de recherche uniquement

Anticorps Monoclonal anti-UBE2I-Specific



Numéro de catalogue: 67660-1-Ig

Informations de base

Numéro de catalogue: 67660-1-Ig	Numéro d'acquisition GenBank: NM_003345	Méthode de purification: Purification par protéine G
Taille: 150ul, Concentration: 1900 µg/ml by Nanodrop and 1000 µg/ml by Bradford method using BSA as the standard;	Identification du gène (NCBI): 7329	CloneNo.: 1G8A2
Hôte: Mouse	Nom complet: ubiquitin-conjugating enzyme E2I (UBC9 homolog, yeast)	Dilutions recommandées: WB 1:5000-1:50000
Isotype: IgG1	MW calculé: 18 kDa	
	MW observés: 18 kDa	

Applications

Applications testées:
WB, ELISA

Spécificité de l'espèce:
Humain, rat, souris

Contrôles positifs:

WB : cellules A549, cellules HEK-293, cellules HeLa, cellules HepG2, cellules HSC-T6, cellules Jurkat, cellules NIH/3T3

Informations générales

UBC9 is also named as UBE2I, UBCE9 and belongs to the ubiquitin-conjugating enzyme family. It is a homologue of the E2 ubiquitin conjugating enzyme and participates in the covalent linking of SUMO-1 molecule to the target protein. This protein is present at a high level in spleen and lung. Moderate level of UBC9 is detected in kidney and liver. Low amount of UBC9 is observed in brain, whereas the 18 kDa band of UBC9 is barely visible or absent in heart and skeletal muscle. In heart and muscle extracts the UBC9 antibodies recognizes a 38 kDa protein band, but this band is not visible in extracts of other rat tissues (PMID:14739995).

Stockage

Stockage:
Stocker à -20 °C
Tampon de stockage:
PBS avec azoture de sodium à 0,02 % et glycérol à 50 % pH 7,3
L'aliquotage n'est pas nécessaire pour le stockage à -20C

*** Les 20ul contiennent 0,1% de BSA.

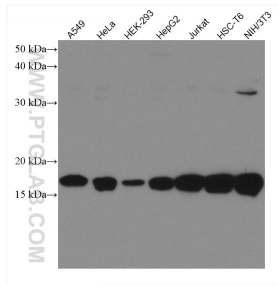
For technical support and original validation data for this product please contact:

T: 1 (888) 4PTGLAB (1-888-478-4522) (toll free in USA), or 1(312) 455-8498 (outside USA)

E: proteintech@ptglab.com
W: ptglab.com

This product is exclusively available under Proteintech Group brand and is not available to purchase from any other manufacturer.

Données de validation sélectionnées



Various lysates were subjected to SDS PAGE followed by western blot with 67660-1-Ig (UBE21-Specific antibody) at dilution of 1:10000 incubated at room temperature for 1.5 hours.