

À des fins de recherche uniquement

# Anticorps Monoclonal anti-EIF2AK1

Numéro de catalogue: 67674-1-Ig



## Informations de base

|  |  |  |
|--|--|--|
| Numéro de catalogue:<br>67674-1-Ig   | Numéro d'acquisition GenBank:<br>BC006524                                    | Méthode de purification:<br>Purification par protéine G                            |
| Taille:<br>150ul , Concentration: 1000 µg/ml by<br>Nanodrop and 586 µg/ml by Bradford<br>method using BSA as the standard; | Identification du gène (NCBI):<br>27102                                      | CloneNo.:<br>2H1F3   |
| Hôte:<br>Mouse   | Nom complet:<br>eukaryotic translation initiation<br>factor 2-alpha kinase 1 | Dilutions recommandées:<br>WB 1:5000-1:50000<br>IHC 1:150-1:600<br>IF 1:400-1:1600 |
| Isotype:<br>IgG1   | MW calculé<br>630 aa, 71 kDa   |  |
| Immunogen Catalog Number:<br>AG16970   | MW observés:<br>71 kDa   |  |

## Applications

### Applications testées:

IF, IHC, WB, ELISA

### Spécificité de l'espèce:

Humain

**Remarque-IHC: il est suggéré de démasquer l'antigène avec un tampon de TE buffer pH 9,0; (\*) À défaut, 'le démasquage de l'antigène peut être 'effectué avec un tampon citrate pH 6,0.**

### Contrôles positifs:

WB : cellules HeLa, cellules 4T1, cellules HEK-293, cellules HepG2, cellules HSC-T6, cellules Jurkat, cellules MCF-7, cellules NIH/3T3

IHC : tissu de cancer du sein humain,

IF : cellules HeLa,

## Informations générales

Eukaryotic initiation factor 2a (eIF2a), which is a critical component in the formation of the translation initiation ternary complex (eIF2a/GTP/methionyl transfer RNA), plays a key role in the ER stress response. EIF2AK1, which is activated by heme deficiency and other stimuli, is a major kinase that phosphorylates EIF2-alpha. Phosphorylation of the alpha subunit of EIF2 downregulates protein synthesis in response to various stress conditions. EIF2AK1 has some isoforms with 630aa, 577aa and 422aa.

## Stockage

### Stockage:

Stocker à -20°C. Stable pendant un an après l'expédition.

### Tampon de stockage:

PBS avec azoture de sodium à 0,02 % et glycérol à 50 % pH 7,3

L'aliquotage n'est pas nécessaire pour le stockage à -20C

\*\*\* Les 20ul contiennent 0,1% de BSA.

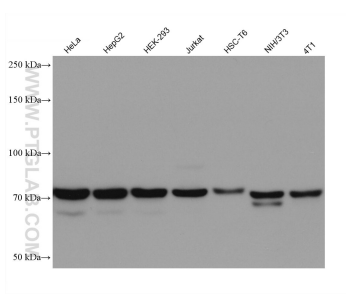
For technical support and original validation data for this product please contact:

T: 1 (888) 4PTGLAB (1-888-478-4522) (toll free in USA), or 1(312) 455-8498 (outside USA)

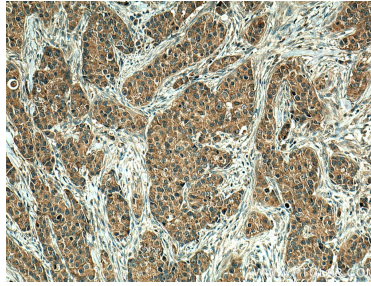
E: proteintech@ptglab.com  
W: ptglab.com

This product is exclusively available under Proteintech Group brand and is not available to purchase from any other manufacturer.

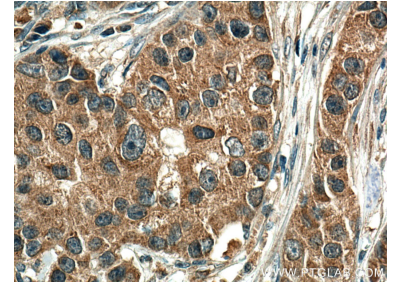
## Données de validation sélectionnées



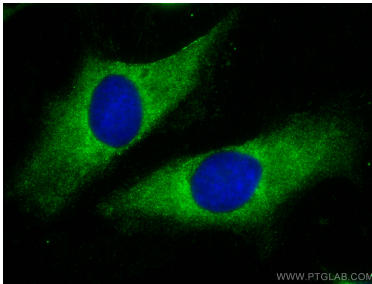
Various lysates were subjected to SDS PAGE followed by western blot with 67674-1-Ig (EIF2AK1 antibody) at dilution of 1:10000 incubated at room temperature for 1.5 hours.



Immunohistochemical analysis of paraffin-embedded human breast cancer tissue slide using 67674-1-Ig (EIF2AK1 antibody) at dilution of 1:300 (under 10x lens). Heat mediated antigen retrieval with Tris-EDTA buffer (pH 9.0).



Immunohistochemical analysis of paraffin-embedded human breast cancer tissue slide using 67674-1-Ig (EIF2AK1 antibody) at dilution of 1:300 (under 40x lens). Heat mediated antigen retrieval with Tris-EDTA buffer (pH 9.0).



Immunofluorescent analysis of (-20°C Methanol) fixed HeLa cells using EIF2AK1 antibody (67674-1-Ig, Clone: 2H1F3) at dilution of 1:800 and CoraLite®488-Conjugated AffiniPure Goat Anti-Mouse IgG(H+L).