

À des fins de recherche uniquement

Anticorps Monoclonal anti-cyclin B1

Numéro de catalogue: 67686-1-Ig

Phare

12 Publications



Informations de base

Numéro de catalogue:
67686-1-Ig

Taille:
150ul, Concentration: 1000 µg/ml by
Nanodrop and 403 µg/ml by Bradford
method using BSA as the standard;

Hôte:
Mouse

Isotype:
IgG1

Immunogen Catalog Number:
AG29444

Numéro d'acquisition GenBank:
BC006510

Identification du gène (NCBI):
891

Nom complet:
cyclin B1

MW calculé
48 kDa

MW observés:
55 kDa

Méthode de purification:
Purification par protéine A

CloneNo.:
1F3G11

Dilutions recommandées:
WB 1:2000-1:10000
IHC 1:1000-1:4000
IF 1:400-1:1600

Applications

Applications testées:
FC, IF, IHC, WB, ELISA

Demandes citées:
IF, WB

Spécificité de l'espèce:
Humain, rat, souris

Espèces citées:
Humain, souris

**Remarque-IHC: il est suggéré de démasquer
l'antigène avec un tampon de TE buffer pH
9,0; (*) A défaut, 'le démasquage de
l'antigène peut être 'effectué avec un
tampon citrate pH 6,0.**

Contrôles positifs:

WB : cellules A549, cellules HEK-293, cellules HeLa,
cellules HSC-T6, cellules Jurkat, cellules K-562,
cellules NIH/3T3

IHC : tissu d'amygdalite humain,

IF : cellules HeLa, cellules HT-29

Informations générales

Cyclin B1 is a regulatory protein involved in mitosis. The gene product complexes with p34(cdc2) to form the maturation-promoting factor (MPF). Two alternative transcripts have been found, a constitutively expressed transcript and a cell cycle-regulated transcript, that is expressed predominantly during G2/M phase of the cell cycle. The different transcripts result from the use of alternate transcription initiation sites. The antibody is specific to CCNB1. We got a 55-60 kDa band in western blotting maybe due to phosphorylation.

Publications notables

Autrice	Pubmed ID	Journal	Application
Li Zhu	34631884	Biomed Res Int	WB
Tsung-Teng Huang	36499211	Int J Mol Sci	WB
Silu Hou	36427601	Food Chem Toxicol	WB

Stockage

Stockage:

Stocker à -20°C. Stable pendant un an après l'expédition.

Tampon de stockage:

PBS avec azoture de sodium à 0,02 % et glycérol à 50 % pH 7,3

L'aliquotage n'est pas nécessaire pour le stockage à -20C

*** Les 20ul contiennent 0,1% de BSA.

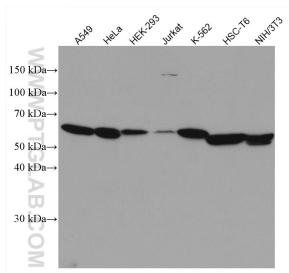
For technical support and original validation data for this product please contact:

T: 1 (888) 4PTGLAB (1-888-478-4522) (toll free
in USA), or 1(312) 455-8498 (outside USA)

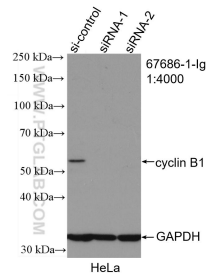
E: proteintech@ptglab.com
W: ptglab.com

This product is exclusively available under Proteintech Group brand and is not available to purchase from any other manufacturer.

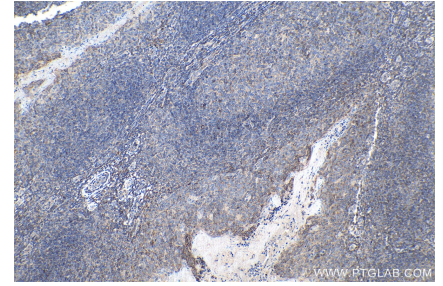
Données de validation sélectionnées



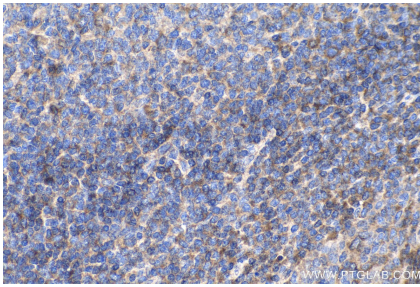
Various lysates were subjected to SDS PAGE followed by western blot with 67686-1-Ig (cyclin B1 antibody) at dilution of 1:4000 incubated at room temperature for 1.5 hours.



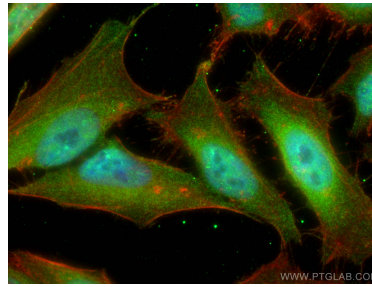
WB result of cyclin B1 antibody (67686-1-Ig; 1:3200; incubated at room temperature for 1.5 hours) with sh-Control and sh-cyclin B1 transfected HeLa cells.



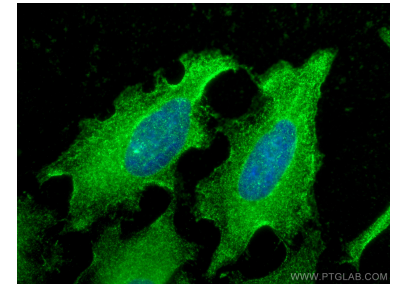
Immunohistochemical analysis of paraffin-embedded human tonsillitis tissue slide using 67686-1-Ig (cyclin B1 antibody) at dilution of 1:1600 (under 10x lens). Heat mediated antigen retrieval with Tris-EDTA buffer (pH 9.0).



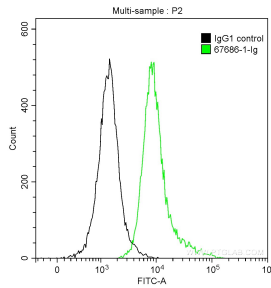
Immunohistochemical analysis of paraffin-embedded human tonsillitis tissue slide using 67686-1-Ig (cyclin B1 antibody) at dilution of 1:1600 (under 40x lens). Heat mediated antigen retrieval with Tris-EDTA buffer (pH 9.0).



Immunofluorescent analysis of (4% PFA) fixed HeLa cells using cyclin B1 antibody (67686-1-Ig, Clone: 1F3G11) at dilution of 1:650 and CoraLite@488-Conjugated AffiniPure Goat Anti-Mouse IgG(H+L), CL594-Phalloidin (red).



Immunofluorescent analysis of (-20°C Ethanol) fixed HeLa cells using cyclin B1 antibody (67686-1-Ig, Clone: 1F3G11) at dilution of 1:300 and CoraLite@488-Conjugated AffiniPure Goat Anti-Mouse IgG(H+L).



1×10^6 Jurkat cells were intracellularly stained with 0.2 ug Anti-Human cyclin B1 (67686-1-Ig, Clone:1F3G11) and CoraLite@488-Conjugated AffiniPure Goat Anti-Mouse IgG(H+L) at dilution 1:1000 (green), or 0.2 ug Mouse IgG1 Isotype Control (66360-1-Ig, Clone: T1F8D3F10) (black). Cells were fixed with 90% MeOH.