

À des fins de recherche uniquement

Anticorps Monoclonal anti-ASL

Numéro de catalogue: 67692-1-Ig **1 Publications**



Informations de base

Numéro de catalogue: 67692-1-Ig	Numéro d'acquisition GenBank: BC008195	Méthode de purification: Purification par protéine A
Taille: 150ul , Concentration: 1000 µg/ml by Nanodrop and 500 µg/ml by Bradford method using BSA as the standard;	Identification du gène (NCBI): 435	CloneNo.: 1G9H3
Hôte: Mouse	Nom complet: argininosuccinate lyase	Dilutions recommandées: WB 1:5000-1:50000
Isotype: IgG2b	MW calculé: 55 kDa	
Immunogen Catalog Number: AG30517	MW observés: 50 kDa	

Applications

Applications testées:
WB, ELISA

Demandes citées:
WB

Spécificité de l'espèce:
Humain, porc, rat, souris

Espèces citées:
souris

Contrôles positifs:

WB : tissu rénal de porc, cellules K-562, cellules LNCaP, tissu hépatique de porc, tissu hépatique de rat, tissu hépatique de souris, tissu rénal de rat, tissu rénal de souris

Informations générales

Argininosuccinate lyase (ASL), one of the significant UC enzymes, catalyzes argininosuccinate cleavage to generate arginine and fumarate. Arginine is then catalyzed by arginase to ornithine and polyamines, which are found to promote cancer cell proliferation and growth. Importantly, ASL ectopic expression is closely associated with poor prognosis of colorectal cancer, hepatocellular. ASL is a member of the aspartase/fumarase superfamily. Enzymes of this superfamily share similar tetrameric structure and active site, though the sequence identities between different members are quite low (less than 20%). Members of this superfamily have been recognised as drug targets for microbial infections. ASL is a 464-amino-acid enzyme with a molecular mass of 49.7 kDa. (PMID: 22386318 PMID: 31018905)

Publications notables

Autrice	Pubmed ID	Journal	Application
Nneka Southwell	37222423	EMBO Mol Med	WB

Stockage

Stockage:
Stocker à -20 °C

Tampon de stockage:
PBS avec azoture de sodium à 0,02 % et glycérol à 50 % pH 7,3
L'aliquotage n'est pas nécessaire pour le stockage à -20C

*** Les 20ul contiennent 0,1% de BSA.

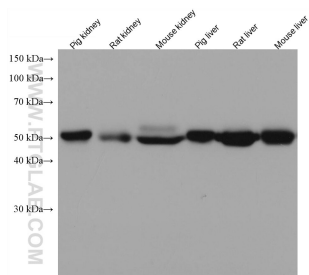
For technical support and original validation data for this product please contact:

T: 1 (888) 4PTGLAB (1-888-478-4522) (toll free in USA), or 1(312) 455-8498 (outside USA)

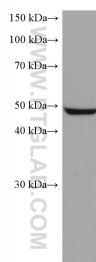
E: proteintech@ptglab.com
W: ptglab.com

This product is exclusively available under Proteintech Group brand and is not available to purchase from any other manufacturer.

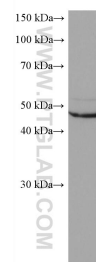
Données de validation sélectionnées



Various lysates were subjected to SDS PAGE followed by western blot with 67692-1-Ig (ASL antibody) at dilution of 1:20000 incubated at room temperature for 1.5 hours.



LNCaP cells were subjected to SDS PAGE followed by western blot with 67692-1-Ig (ASL antibody) at dilution of 1:20000 incubated at room temperature for 1.5 hours.



K-562 cells were subjected to SDS PAGE followed by western blot with 67692-1-Ig (ASL antibody) at dilution of 1:20000 incubated at room temperature for 1.5 hours.