

À des fins de recherche uniquement

Anticorps Monoclonal anti-PSMA6

Numéro de catalogue: 67695-1-Ig



Informations de base

Numéro de catalogue: 67695-1-Ig	Numéro d'acquisition GenBank: BC023659	Méthode de purification: Purification par protéine A
Taille: 150ul, Concentration: 1000 µg/ml by Nanodrop and 500 µg/ml by Bradford method using BSA as the standard;	Identification du gène (NCBI): 5687	CloneNo.: 1D4B2
Hôte: Mouse	Nom complet: proteasome (prosome, macropain) subunit, alpha type, 6	Dilutions recommandées: WB 1:2000-1:10000 IHC 1:250-1:1000 IF 1:200-1:800
Isotype: IgG2b	MW calculé 246 aa, 27 kDa	
Immunogen Catalog Number: AG21761	MW observés: 30 kDa	

Applications

Applications testées:
FC, IF, IHC, WB, ELISA

Spécificité de l'espèce:
Humain, rat, souris

Remarque-IHC: il est suggéré de démasquer l'antigène avec un tampon de TE buffer pH 9.0; (*) À défaut, 'le démasquage de l'antigène peut être 'effectué avec un tampon citrate pH 6,0.

Contrôles positifs:

WB : cellules HeLa, cellules HEK-293, cellules HepG2, cellules HSC-T6, cellules Jurkat, cellules K-562, cellules NIH/3T3

IHC : tissu de cancer du poumon humain,

IF : tissu de cancer du poumon humain,

Informations générales

PSMA6 (Proteasome subunit alpha type-6) is also named as PROS27 and belongs to the peptidase T1A family. The proteasome is a multicatalytic proteinase complex which is characterized by its ability to cleave peptides with Arg, Phe, Tyr, Leu, and Glu adjacent to the leaving group at neutral or slightly basic pH. It also has an ATP-dependent proteolytic activity.

Stockage

Stockage:

Stocker à -20°C. Stable pendant un an après l'expédition.

Tampon de stockage:

PBS avec azoture de sodium à 0,02 % et glycérol à 50 % pH 7,3

L'aliquotage n'est pas nécessaire pour le stockage à -20C

*** Les 20ul contiennent 0,1% de BSA.

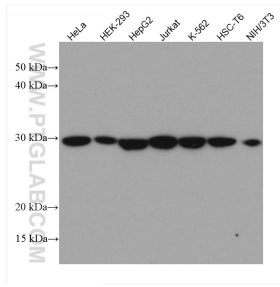
For technical support and original validation data for this product please contact:

T: 1 (888) 4PTGLAB (1-888-478-4522) (toll free in USA), or 1(312) 455-8498 (outside USA)

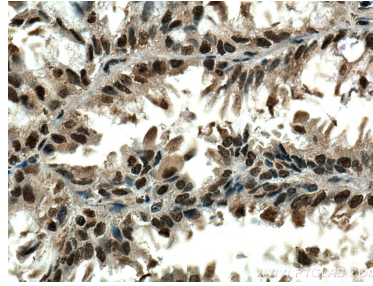
E: proteintech@ptglab.com
W: ptglab.com

This product is exclusively available under Proteintech Group brand and is not available to purchase from any other manufacturer.

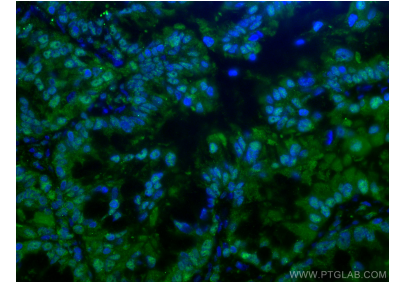
Données de validation sélectionnées



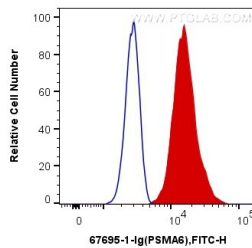
Various lysates were subjected to SDS PAGE followed by western blot with 67695-1-Ig (PSMA6 antibody) at dilution of 1:5000 incubated at room temperature for 1.5 hours.



Immunohistochemical analysis of paraffin-embedded human lung cancer tissue slide using 67695-1-Ig (PSMA6 antibody) at dilution of 1:500 (under 40x lens). Heat mediated antigen retrieval with Tris-EDTA buffer (pH 9.0).



Immunofluorescent analysis of (4% PFA) fixed human lung cancer tissue using PSMA6 antibody (67695-1-Ig, Clone: 1D4B2) at dilution of 1:400 and CoraLite®488-Conjugated AffiniPure Goat Anti-Mouse IgG(H+L).



1×10^6 HepG2 cells were intracellularly stained with 0.4 μ g Anti-Human PSMA6 (67695-1-Ig, Clone: 1D4B2) and CoraLite®488-Conjugated AffiniPure Goat Anti-Mouse IgG(H+L) at dilution 1:1000 (red), or 0.4 μ g Control Antibody. Cells were fixed and permeabilized with Transcription Factor Staining Buffer Kit (PF00011).