

À des fins de recherche uniquement

Anticorps Monoclonal anti-PPT1

Numéro de catalogue: 67699-1-Ig **Phare**



Informations de base

Numéro de catalogue: 67699-1-Ig	Numéro d'acquisition GenBank: BC008426	Méthode de purification: Purification par protéine A
Taille: 150ul , Concentration: 1000 µg/ml by Nanodrop and 500 µg/ml by Bradford method using BSA as the standard;	Identification du gène (NCBI): 5538	CloneNo.: 1A1A3
Hôte: Mouse	Nom complet: palmitoyl-protein thioesterase 1	Dilutions recommandées: WB 1:2000-1:10000
Isotype: IgG2a	MW calculé 34 kDa	
Immunogen Catalog Number: AG30550	MW observés: 32-34 kda	

Applications

Applications testées:
WB, ELISA

Spécificité de l'espèce:
Humain, Lapin, porc

Contrôles positifs:

WB : cellules A549, cellules HeLa, cellules Jurkat, cellules K-562, cellules LNCaP, tissu cardiaque de porc, tissu cérébral de lapin, tissu cérébral de porc, tissu de cervelet de lapin, tissu de cervelet de porc

Informations générales

The defective gene behind the INCL (infantile neuronal ceroid lipofuscinoses) disease, CLN1, encodes for palmitoyl protein thioesterase 1 (PPT1). It consists of 306 amino acids, including a signal sequence of 26 amino acids and three N-linked glycosylation sites. This protein exists with a molecular mass of 32 kDa, 34 kDa, 36 kDa, and 38 kDa. The enzyme is transported into lysosomes of non-neuronal cells by the mannose 6-phosphate receptor (M6PR) mediated pathway and a significant amount of native PPT1 resides in a complex rather than in a monomeric form (PMID:17565660).

Stockage

Stockage:
Stocker à -20°C. Stable pendant un an après l'expédition.

Tampon de stockage:
PBS avec azoture de sodium à 0,02 % et glycérol à 50 % pH 7,3

L'aliquotage n'est pas nécessaire pour le stockage à -20C

*** Les 20ul contiennent 0,1% de BSA.

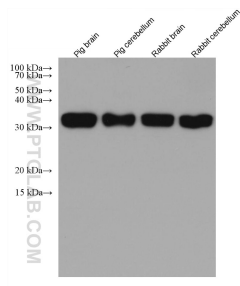
For technical support and original validation data for this product please contact:

T: 1 (888) 4PTGLAB (1-888-478-4522) (toll free in USA), or 1(312) 455-8498 (outside USA)

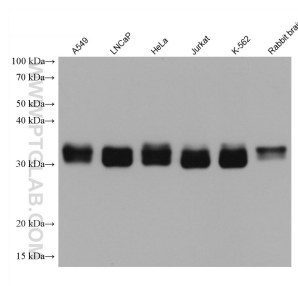
E: proteintech@ptglab.com
W: ptglab.com

This product is exclusively available under Proteintech Group brand and is not available to purchase from any other manufacturer.

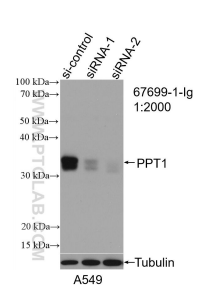
Données de validation sélectionnées



Various lysates were subjected to SDS PAGE followed by western blot with 67699-1-Ig (PPT1 antibody) at dilution of 1:5000 incubated at room temperature for 1.5 hours.



Various lysates were subjected to SDS PAGE followed by western blot with 67699-1-Ig (PPT1 antibody) at dilution of 1:5000 incubated at room temperature for 1.5 hours.



WB result of PPT1 antibody (67699-1-Ig; 1:2000; incubated at room temperature for 1.5 hours) with sh-Control and sh-PPT1 transfected A549 cells.