

À des fins de recherche uniquement

Anticorps Monoclonal anti-DLD

Numéro de catalogue: 67702-1-Ig

Phare

1 Publications



Informations de base

Numéro de catalogue: 67702-1-Ig	Numéro d'acquisition GenBank: BC018696	Méthode de purification: Purification par protéine G
Taille: 150ul, Concentration: 1100 µg/ml by Nanodrop and 500 µg/ml by Bradford method using BSA as the standard;	Identification du gène (NCBI): 1738	CloneNo.: 2E7G5
Hôte: Mouse	Nom complet: dihydrolipoamide dehydrogenase	Dilutions recommandées: WB 1:2000-1:10000 IHC 1:250-1:1000
Isotype: IgG1	MW calculé: 509 aa, 54 kDa	
Immunogen Catalog Number: AG9680	MW observés: 54 kDa	

Applications

Applications testées: IHC, WB, ELISA	Contrôles positifs:
Demandes citées: IHC	WB : cellules HuH-7, cellules HeLa, cellules HepG2, cellules HSC-T6, cellules Jurkat, cellules LO2, cellules NIH/3T3
Spécificité de l'espèce: Humain, rat, souris	IHC : tissu de cancer du foie humain,
Espèces citées: Humain	
Remarque-IHC: il est suggéré de démasquer l'antigène avec un tampon de TE buffer pH 9,0; (*) A défaut, 'le démasquage de l'antigène peut être 'effectué avec un tampon citrate pH 6,0.	

Informations générales

DLD(Dihydrolipoyl dehydrogenase, mitochondrial) is also named as GCSSL, LAD, PHE3 and belongs to the class-I pyridine nucleotide-disulfide oxidoreductase family. It catalyzes the oxidation of dihydrolipoamide, hE3 uses two molecules : non-covalently bound FAD and a transiently bound substrate, NAD+. DLD is involved in the hyperactivation of spermatazoa during capacitation and in the spermatazoal acrosome reaction.

Publications notables

Autrice	Pubmed ID	Journal	Application
Kai Yao	37600770	Front Immunol	IHC

Stockage

Stockage:
Stocker à -20 °C
Tampon de stockage:
PBS avec azoture de sodium à 0,02 % et glycérol à 50 % pH 7,3
L'aliquotage n'est pas nécessaire pour le stockage à -20C

*** Les 20ul contiennent 0,1% de BSA.

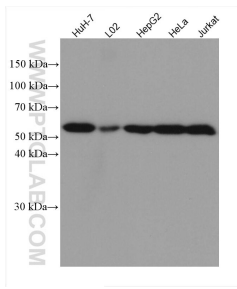
For technical support and original validation data for this product please contact:

T: 1 (888) 4PTGLAB (1-888-478-4522) (toll free in USA), or 1(312) 455-8498 (outside USA)

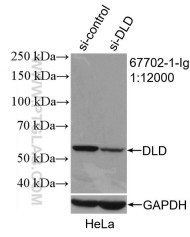
E: proteintech@ptglab.com
W: ptglab.com

This product is exclusively available under Proteintech Group brand and is not available to purchase from any other manufacturer.

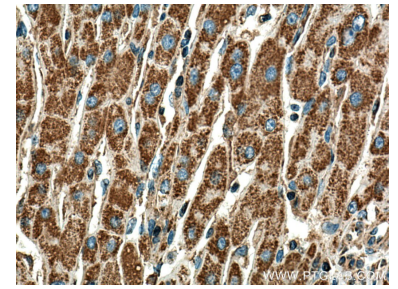
Données de validation sélectionnées



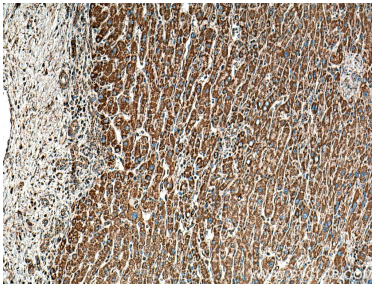
Various lysates were subjected to SDS PAGE followed by western blot with 67702-1-Ig (DLD antibody) at dilution of 1:5000 incubated at room temperature for 1.5 hours.



WB result of DLD antibody (67702-1-Ig; 1:12000; incubated at room temperature for 1.5 hours) with sh-Control and sh-DLD transfected HeLa cells.



Immunohistochemical analysis of paraffin-embedded human liver cancer tissue slide using 67702-1-Ig (DLD antibody) at dilution of 1:500 (under 40x lens). Heat mediated antigen retrieval with Tris-EDTA buffer (pH 9.0).



Immunohistochemical analysis of paraffin-embedded human liver cancer tissue slide using 67702-1-Ig (DLD antibody) at dilution of 1:500 (under 10x lens). Heat mediated antigen retrieval with Tris-EDTA buffer (pH 9.0).