

À des fins de recherche uniquement

Anticorps Monoclonal anti-Laminin beta 1



Numéro de catalogue: 67705-1-Ig

Informations de base

Numéro de catalogue: 67705-1-Ig	Numéro d'acquisition GenBank: BC113455	Méthode de purification: Purification par protéine G
Taille: 150ul , Concentration: 1200 µg/ml by Nanodrop and 500 µg/ml by Bradford method using BSA as the standard;	Identification du gène (NCBI): 3912	CloneNo.: 1B8E9
Hôte: Mouse	Nom complet: laminin, beta 1	Dilutions recommandées: WB 1:2000-1:10000
Isotype: IgG1	MW calculé: 1786 aa, 198 kDa	
Immunogen Catalog Number: AG19182	MW observés: 220-240 kDa	

Applications

Applications testées: WB, ELISA	Contrôles positifs: WB : cellules HEK-293, cellules A549, cellules HeLa, cellules HepG2, cellules NIH/3T3, cellules U2OS, tissu placentaire humain
Spécificité de l'espèce: Humain, souris	

Informations générales

Laminins are a family of basement membrane glycoproteins composed of three nonidentical chains, laminin alpha, beta and gamma (formerly A, B1, and B2, respectively) (PMID: 7959779). Laminins contribute to the structure of extracellular matrix and influence the behavior of associated cells, such as adhesion, differentiation, migration, phenotype stability, and resistance to anoikis (PMID: 23057746). Laminin beta 1 (LAMB1) is expressed in most tissues that produce basement membranes, and is one of the 3 chains constituting laminin-1, the first laminin isolated from Engelbreth-Holm-Swarm (EHS) tumor. Laminin beta 1 is also a subunit of laminin-2 (laminin-211 or merosin), laminin-6 (laminin-311 or K-laminin), laminin-8 (laminin-411), laminin-10 (laminin-511) and laminin-12 (laminin-213).

Stockage

Stockage:
Stocker à -20 °C.
Tampon de stockage:
PBS avec azoture de sodium à 0,02 % et glycérol à 50 % pH 7,3
L'aliquotage n'est pas nécessaire pour le stockage à -20C

*** Les 20ul contiennent 0,1% de BSA.

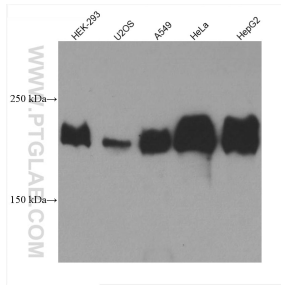
For technical support and original validation data for this product please contact:

T: 1 (888) 4PTGLAB (1-888-478-4522) (toll free in USA), or 1(312) 455-8498 (outside USA)

E: proteintech@ptglab.com
W: ptglab.com

This product is exclusively available under Proteintech Group brand and is not available to purchase from any other manufacturer.

Données de validation sélectionnées



Various lysates were subjected to SDS PAGE followed by western blot with 67705-1-Ig (LAMB1 antibody) at dilution of 1:5000 incubated at room temperature for 1.5 hours.