

À des fins de recherche uniquement

Anticorps Monoclonal anti-EPRS

Numéro de catalogue: 67712-1-Ig



Informations de base

Numéro de catalogue: 67712-1-Ig	Numéro d'acquisition GenBank: BC126275	Méthode de purification: Purification par protéine A
Taille: 150ul , Concentration: 500 µg/ml by Bradford method using BSA as the standard;	Identification du gène (NCBI): 2058	CloneNo.: 1B7G2
Hôte: Mouse	Nom complet: glutamyl-prolyl-tRNA synthetase	Dilutions recommandées: WB 1:5000-1:50000 IHC 1:500-1:2000 IF 1:50-1:500
Isotype: IgG2a	MW calculé 1512 aa, 171 kDa	
Immunogen Catalog Number: AG19184	MW observés: 171 kDa	

Applications

Applications testées:

IF, IHC, WB, ELISA

Spécificité de l'espèce:

Humain, rat, souris

Remarque-IHC: il est suggéré de démasquer l'antigène avec un tampon de TE buffer pH 9,0; (*) À défaut, 'le démasquage de l'antigène peut être effectué avec un tampon citrate pH 6,0.

Contrôles positifs:

WB : cellules HT-29, cellules HEK-293, cellules HeLa, cellules HepG2, cellules HSC-T6, cellules Jurkat, cellules LNCaP, cellules NIH/3T3, cellules PC-12

IHC : tissu de cancer du poumon humain,

IF : cellules HeLa,

Informations générales

Human EPRS is a 172 kDa, 1512 amino acid polypeptide consisting of three major domains. The N and C termini contain ERS and PRS catalytic domains, respectively, joined by a 300 amino acid linker containing three tandem WHEP-TRS (referred to as WHEP) domains. EPRS is a bifunctional aminoacyl-tRNA synthetase that catalyzes the aminoacylation of glutamic acid and proline tRNA species. EPRS has a special role in GAIT-mediated translational control, as it is solely responsible for recognition and interaction with GAIT elements in target mRNAs. (PMID: 29576217, PMID: 22386318, PMID: 19647514)

Stockage

Stockage:

Stocker à -20 °C.

Tampon de stockage:

PBS avec azoture de sodium à 0,02 % et glycérol à 50 % pH 7,3

L'aliquotage n'est pas nécessaire pour le stockage à -20C

*** Les 20ul contiennent 0,1% de BSA.

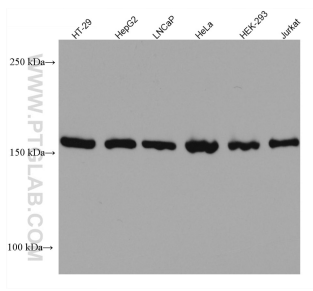
For technical support and original validation data for this product please contact:

T: 1 (888) 4PTGLAB (1-888-478-4522) (toll free in USA), or 1(312) 455-8498 (outside USA)

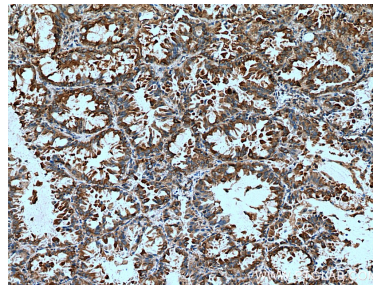
E: proteintech@ptglab.com
W: ptglab.com

This product is exclusively available under Proteintech Group brand and is not available to purchase from any other manufacturer.

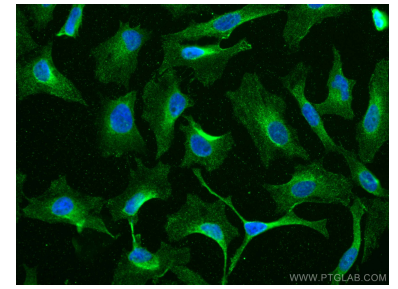
Données de validation sélectionnées



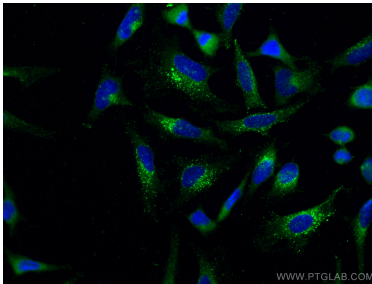
Various lysates were subjected to SDS PAGE followed by western blot with 67712-1-Ig (EPRS antibody) at dilution of 1:20000 incubated at room temperature for 1.5 hours.



Immunohistochemical analysis of paraffin-embedded human lung cancer tissue slide using 67712-1-Ig (EPRS antibody) at dilution of 1:1000 (under 10x lens). Heat mediated antigen retrieval with Tris-EDTA buffer (pH 9.0).



Immunofluorescent analysis of (-20°C Methanol) fixed HeLa cells using EPRS antibody (67712-1-Ig, Clone: 1B7G2) at dilution of 1:200 and CoraLite®488-Conjugated AffiniPure Goat Anti-Mouse IgG(H+L).



Immunofluorescent analysis of (-20°C Methanol) fixed HeLa cells using EPRS antibody (67712-1-Ig, Clone: 1B7G2) at dilution of 1:800 and CoraLite®488-Conjugated AffiniPure Goat Anti-Mouse IgG(H+L). DAPI (blue).