

À des fins de recherche uniquement

Anticorps Monoclonal anti-CEP290

Numéro de catalogue: 67716-1-Ig



Informations de base

Numéro de catalogue: 67716-1-Ig	Numéro d'acquisition GenBank: BC008641	Méthode de purification: Purification par protéine A
Taille: 150ul , Concentration: 2100 µg/ml by Nanodrop and 1000 µg/ml by Bradford method using BSA as the standard;	Identification du gène (NCBI): 80184	CloneNo.: 2C10G2
Hôte: Mouse	Nom complet: centrosomal protein 290kDa	Dilutions recommandées: WB 1:1000-1:4000
Isotype: IgG2b	MW calculé 2479 aa, 290 kDa	
Immunogen Catalog Number: AG17457	MW observés: 290 kDa	

Applications

Applications testées: WB,ELISA	Contrôles positifs: WB : cellules HEK-293, cellules HeLa, cellules HSC-T6, cellules K-562, cellules NCCIT
Spécificité de l'espèce: Humain, rat, souris	

Informations générales

Studies in the Chlamydomonas model system has shown that the ciliary protein CEP290 is a critical component of these Y-link junctions. Additionally, numerous studies have demonstrated that CEP290's function is critical for IFT- in CEP290 knockdown experiments, many proteins that would normally localize to the cilium fail to do so, and cilium formation is disrupted or absent. Mutations in CEP290 are accountable for cases of nephronophthisis, Leber congenital amaurosis and Joubert syndrome. In IF analysis of HeLa cells, the white arrows show centrosome and cilium staining. Two isoforms were produced by alternative splicing with predicted MW of 290 and 180 kDa according to UniProt.

Stockage

Stockage:
Stocker à -20 °C
Tampon de stockage:
PBS avec azoture de sodium à 0,02 % et glycérol à 50 % pH 7,3
L'aliquotage n'est pas nécessaire pour le stockage à -20C

*** Les 20ul contiennent 0,1% de BSA.

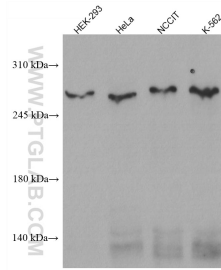
For technical support and original validation data for this product please contact:

T: 1 (888) 4PTGLAB (1-888-478-4522) (toll free
in USA), or 1(312) 455-8498 (outside USA)

E: proteintech@ptglab.com
W: ptglab.com

This product is exclusively available under Proteintech Group brand and is not available to purchase from any other manufacturer.

Données de validation sélectionnées



Various lysates were subjected to SDS PAGE followed by western blot with 67716-1-Ig (CEP290 antibody) at dilution of 1:2000 incubated at room temperature for 1.5 hours.