

À des fins de recherche uniquement

Anticorps Monoclonal anti-Cyclin B2

Numéro de catalogue: 67726-1-Ig



Informations de base

| | | |
|--|---|---|
| Numéro de catalogue: 67726-1-Ig | Numéro d'acquisition GenBank: BC105086 | Méthode de purification: Purification par protéine A |
| Taille: 150ul, Concentration: 1600 µg/ml by Nanodrop and 1000 µg/ml by Bradford method using BSA as the standard; | Identification du gène (NCBI): 9133 | CloneNo.: 2G8B7 |
| Hôte: Mouse | Nom complet: cyclin B2 | Dilutions recommandées: WB 1:1000-1:4000 IHC 1:50-1:500 IF 1:200-1:800 |
| Isotype: IgG2a | MW calculé: 398 aa, 45 kDa | |
| Immunogen Catalog Number: AG16329 | MW observés: 45 kDa | |

Applications

Applications testées:

IF, IHC, WB, ELISA

Spécificité de l'espèce:

Humain, souris

Remarque-IHC: il est suggéré de démasquer l'antigène avec un tampon de TE buffer pH 9.0; (*) À défaut, le démasquage de l'antigène peut être effectué avec un tampon citrate pH 6,0.

Contrôles positifs:

WB : cellules DU 145, cellules HEK-293, cellules HeLa, cellules Jurkat, cellules K-562, cellules U2OS

IHC : tissu de cancer du sein humain,

IF : tissu testiculaire de souris, cellules PC-12

Informations générales

Cyclin B2 (CCNB2) is a member of cyclin family proteins, which regulate the activities of cyclin dependent kinases (CDKs) and different cyclins function spatially and temporally in specific phases of the cell cycle. Cyclin B2 serves a key role in progression of G2/M transition. Cyclin B2 has been found to be up-regulated in a variety of human cancers, such as adrenocortical carcinoma, breast carcinoma, colorectal adenocarcinoma, pituitary adenoma and gastric cancer. The aberrant expression of Cyclin B2 deregulates spindle checkpoints in the cell cycle and results in chromosomal instability (CIN), one of the signature phenotypes of most cancers. Moreover, serum circulating Cyclin B2 mRNA expression has been found increased in cancer patients and associated with cancer stage and metastasis status.

Stockage

Stockage:

Stocker à -20°C. Stable pendant un an après l'expédition.

Tampon de stockage:

PBS avec azoture de sodium à 0,02 % et glycérol à 50 % pH 7,3

L'aliquotage n'est pas nécessaire pour le stockage à -20C

*** Les 20ul contiennent 0,1% de BSA.

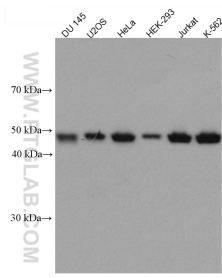
For technical support and original validation data for this product please contact:

T: 1 (888) 4PTGLAB (1-888-478-4522) (toll free in USA), or 1(312) 455-8498 (outside USA)

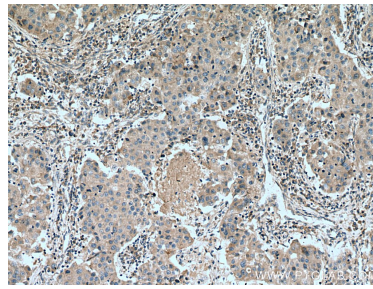
E: proteintech@ptglab.com
W: ptglab.com

This product is exclusively available under Proteintech Group brand and is not available to purchase from any other manufacturer.

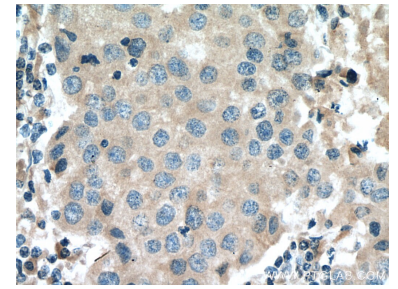
Données de validation sélectionnées



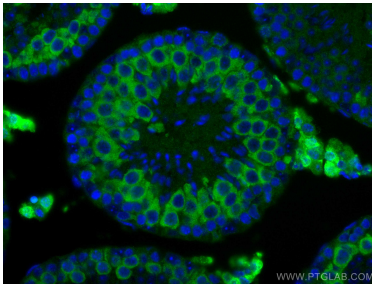
Various lysates were subjected to SDS PAGE followed by western blot with 67726-1-Ig (CCNB2 antibody) at dilution of 1:2000 incubated at room temperature for 1.5 hours.



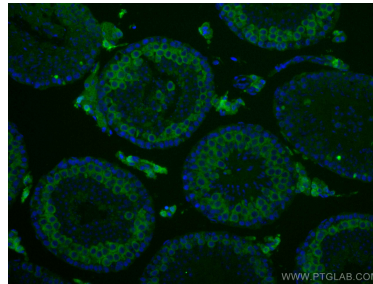
Immunohistochemical analysis of paraffin-embedded human breast cancer tissue slide using 67726-1-Ig (Cyclin B2 antibody) at dilution of 1:200 (under 10x lens). Heat mediated antigen retrieval with Tris-EDTA buffer (pH 9.0).



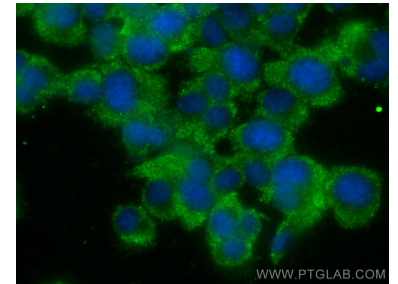
Immunohistochemical analysis of paraffin-embedded human breast cancer tissue slide using 67726-1-Ig (Cyclin B2 antibody) at dilution of 1:200 (under 40x lens). Heat mediated antigen retrieval with Tris-EDTA buffer (pH 9.0).



Immunofluorescent analysis of (4% PFA) fixed mouse testis tissue using Cyclin B2 antibody (67726-1-Ig, Clone: 2G8B7) at dilution of 1:400 and CoraLite@488-Conjugated AffiniPure Goat Anti-Mouse IgG(H+L).



Immunofluorescent analysis of (4% PFA) fixed mouse testis tissue using Cyclin B2 antibody (67726-1-Ig, Clone: 2G8B7) at dilution of 1:400 and CoraLite@488-Conjugated AffiniPure Goat Anti-Mouse IgG(H+L).



Immunofluorescent analysis of (-20°C Ethanol) fixed PC-12 cells using Cyclin B2 antibody (67726-1-Ig, Clone: 2G8B7) at dilution of 1:400 and CoraLite@488-Conjugated AffiniPure Goat Anti-Mouse IgG(H+L).