

À des fins de recherche uniquement

# Anticorps Monoclonal anti-RPL6

Numéro de catalogue: 67729-1-Ig



## Informations de base

Numéro de catalogue:

67729-1-Ig

Taille:

150ul, Concentration: 500 µg/ml by Nanodrop and 287 µg/ml by Bradford method using BSA as the standard;

Hôte:

Mouse

Isotype:

IgG1

Immunogen Catalog Number:

AG6840

Numéro d'acquisition GenBank:

BC004138

Identification du gène (NCBI):

6128

Nom complet:

ribosomal protein L6

MW calculé

33 kDa

MW observés:

34 kDa

Méthode de purification:

Purification par affinité contre l'antigène

CloneNo.:

3F6F8

Dilutions recommandées:

WB 1:5000-1:50000

IF 1:200-1:800

## Applications

Applications testées:

IF, WB, ELISA

Spécificité de l'espèce:

Humain, rat, souris

Contrôles positifs:

WB : cellules A549, cellules 4T1, cellules HEK-293, cellules HeLa, cellules HSC-T6, cellules Jurkat, cellules K-562, cellules NIH/3T3, cellules PC-12

IF : cellules L02,

## Informations générales

Ribosomes are large multiple protein complexes which is composed of more than 80 components and provide a protein-synthesizing machinery for all living cells. Ribosomal protein like 6 (RPL6, also called Taxreb107 for Tax responsive element binding protein 107), one of the ribosomal components, can bind with the Tax responsive element of human T cell leukemia virus (HTLV)-I in addition to be assembled to ribosomes [PMID:12031506]. Overexpressed in gastric cancer could promote cell growth and cell cycle progression at least through upregulating cyclin E expression [PMID:20171175].

## Stockage

Stockage:

Stocker à -20°C. Stable pendant un an après l'expédition.

Tampon de stockage:

PBS avec azoture de sodium à 0,02 % et glycérol à 50 % pH 7,3

L'aliquotage n'est pas nécessaire pour le stockage à -20C

\*\*\* Les 20ul contiennent 0,1% de BSA.

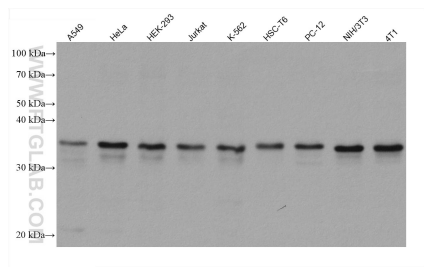
For technical support and original validation data for this product please contact:

T: 1 (888) 4PTGLAB (1-888-478-4522) (toll free in USA), or 1(312) 455-8498 (outside USA)

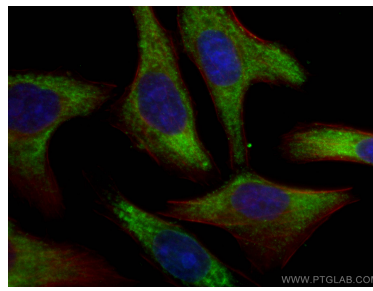
E: proteintech@ptglab.com  
W: ptglab.com

This product is exclusively available under Proteintech Group brand and is not available to purchase from any other manufacturer.

## Données de validation sélectionnées



Various lysates were subjected to SDS PAGE followed by western blot with 67729-1-Ig (RPL6 antibody) at dilution of 1:20000 incubated at room temperature for 1.5 hours.



Immunofluorescent analysis of (-20°C Ethanol) fixed LO2 cells using RPL6 antibody (67729-1-Ig, Clone: 3F6F8) at dilution of 1:400 and CoraLite® 488-Conjugated AffiniPure Goat Anti-Mouse IgG(H+L), CL594-Phalloidin (red).