

À des fins de recherche uniquement

Anticorps Monoclonal anti-CTPS2

Numéro de catalogue: 67734-1-Ig



Informations de base

Numéro de catalogue: 67734-1-Ig	Numéro d'acquisition GenBank: BC034986	Méthode de purification: Purification par protéine A
Taille: 150ul , Concentration: 1000 µg/ml by Nanodrop and 692 µg/ml by Bradford method using BSA as the standard;	Identification du gène (NCBI): 56474	CloneNo.: 1A3B8
Hôte: Mouse	Nom complet: CTP synthase II	Dilutions recommandées: WB 1:2000-1:10000 IHC 1:250-1:1000 IF 1:400-1:1600
Isotype: IgG2a	MW calculé: 586 aa, 66 kDa	
Immunogen Catalog Number: AG30258	MW observés: 66 kDa	

Applications

Applications testées:

IF, IHC, WB, ELISA

Spécificité de l'espèce:

Humain, souris

Remarque-IHC: il est suggéré de démasquer l'antigène avec un tampon de TE buffer pH 9,0; (*) À défaut, le démasquage de l'antigène peut être effectué avec un tampon citrate pH 6,0.

Contrôles positifs:

WB : cellules LNCaP, cellules HEK-293, cellules HeLa, cellules HepG2, cellules K-562, cellules NIH/3T3, cellules PC-12, cellules RAW 264.7, cellules U2OS

IHC : tissu de cancer de la prostate humain,

IF : cellules PC-12, tissu de cancer de la prostate humain

Informations générales

CTPS2 (CTP synthase 2) is also named as UTP--ammonia ligase 2 and belongs to the CTP synthase family. It catalyzes the ATP-dependent amination of UTP to CTP with either L-glutamine or ammonia as the source of nitrogen and constitutes the rate-limiting enzyme in the synthesis of cytosine nucleotides.

Stockage

Stockage:

Stocker à -20°C. Stable pendant un an après l'expédition.

Tampon de stockage:

PBS avec azoture de sodium à 0,02 % et glycérol à 50 % pH 7,3

L'aliquotage n'est pas nécessaire pour le stockage à -20C

*** Les 20ul contiennent 0,1% de BSA.

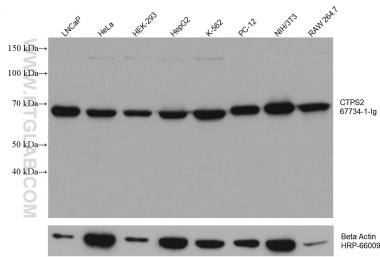
For technical support and original validation data for this product please contact:

T: 1 (888) 4PTGLAB (1-888-478-4522) (toll free in USA), or 1(312) 455-8498 (outside USA)

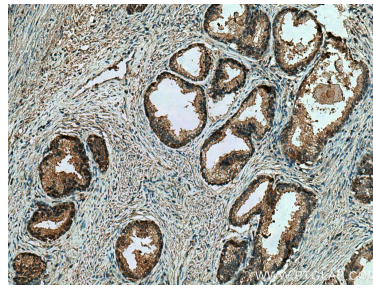
E: proteintech@ptglab.com
W: ptglab.com

This product is exclusively available under Proteintech Group brand and is not available to purchase from any other manufacturer.

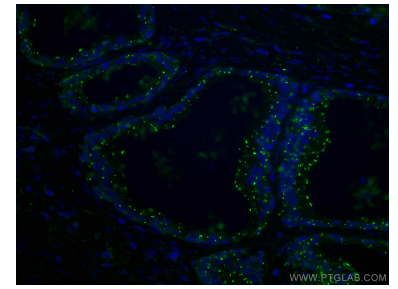
Données de validation sélectionnées



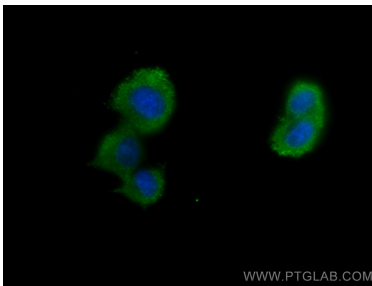
Various lysates were subjected to SDS PAGE followed by western blot with 67734-1-Ig (CTPS2 antibody) at dilution of 1:5000 incubated at room temperature for 1.5 hours. The membrane was stripped and reblotted with HRP-conjugated Beta Actin Monoclonal antibody (HRP-66009) as loading control.



Immunohistochemical analysis of paraffin-embedded human prostate cancer tissue slide using 67734-1-Ig (CTPS2 antibody) at dilution of 1:500 (under 10x lens). Heat mediated antigen retrieval with Tris-EDTA buffer (pH 9.0).



Immunofluorescent analysis of (4% PFA) fixed human prostate cancer tissue using CTPS2 antibody (67734-1-Ig, Clone: 1A3B8) at dilution of 1:400 and CoraLite®488-Conjugated AffiniPure Goat Anti-Mouse IgG(H+L).



Immunofluorescent analysis of (-20°C Methanol) fixed PC-12 cells using CTPS2 antibody (67734-1-Ig, Clone: 1A3B8) at dilution of 1:800 and CoraLite®488-Conjugated AffiniPure Goat Anti-Mouse IgG(H+L).