

À des fins de recherche uniquement

Anticorps Monoclonal anti-SIX1

Numéro de catalogue: 67741-1-Ig



Informations de base

Numéro de catalogue: 67741-1-Ig	Numéro d'acquisition GenBank: BC008874	Méthode de purification: Purification par protéine A
Taille: 150ul, Concentration: 1000 µg/ml by Nanodrop;	Identification du gène (NCBI): 6495	CloneNo.: 2D7D1
Hôte: Mouse	Nom complet: SIX homeobox 1	Dilutions recommandées: WB 1:1000-1:4000
Isotype: IgG1	MW calculé: 32 kDa	
Immunogen Catalog Number: AG28570	MW observés: 30-35 kDa	

Applications

Applications testées:
WB, ELISA

Spécificité de l'espèce:
Humain, Lapin, porc, rat, souris

Contrôles positifs:

WB : cellules L02, cellules HeLa, tissu de muscle squelettique de rat, tissu de muscle squelettique de souris

Informations générales

SIX1 belongs to SIX family that contains a divergent DNA-binding homeodomain and an upstream SIX domain, which may participate both in determining DNA-binding specificity and in mediating protein-protein interactions. It may be involved in limb tendon and ligament development, and specifically expressed in skeletal muscle. SIX1 plays an essential role in the development of numerous organs and shows little to no expression in most non-neoplastic adult tissue, yet is overexpressed in a number of neoplasms where it increases cell proliferation and survival. The calculated molecular weight of SIX1 is 32kDa, but modified SIX1 is about 35 kDa.

Stockage

Stockage:
Stocker à -20°C. Stable pendant un an après l'expédition.

Tampon de stockage:
PBS avec azote de sodium à 0,02 % et glycérol à 50 % pH 7,3
L'aliquotage n'est pas nécessaire pour le stockage à -20C

*** Les 20ul contiennent 0,1% de BSA.

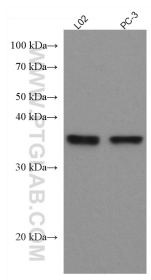
For technical support and original validation data for this product please contact:

T: 1 (888) 4PTGLAB (1-888-478-4522) (toll free
in USA), or 1(312) 455-8498 (outside USA)

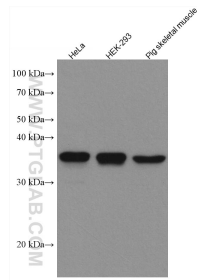
E: proteintech@ptglab.com
W: ptglab.com

This product is exclusively available under Proteintech Group brand and is not available to purchase from any other manufacturer.

Données de validation sélectionnées



Various lysates were subjected to SDS PAGE followed by western blot with 67741-1-Ig (SIX1 antibody) at dilution of 1:2000 incubated at room temperature for 1.5 hours.



Various lysates were subjected to SDS PAGE followed by western blot with 67741-1-Ig (SIX1 antibody) at dilution of 1:2000 incubated at room temperature for 1.5 hours.