

À des fins de recherche uniquement

# Anticorps Monoclonal anti-SKP1

Numéro de catalogue: 67745-1-Ig



## Informations de base

Numéro de catalogue: 67745-1-Ig	Numéro d'acquisition GenBank: BC009839	Méthode de purification: Purification par protéine A
Taille: 150ul , Concentration: 1000 µg/ml by Nanodrop;	Identification du gène (NCBI): 6500	CloneNo.: 1D5G4
Hôte: Mouse	Nom complet: S-phase kinase-associated protein 1	Dilutions recommandées: WB 1:5000-1:50000 IF 1:400-1:1600
Isotype: IgG2b	MW calculé 19 kDa	
Immunogen Catalog Number: AG30709	MW observés: 18-20 kDa	

## Applications

Applications testées:  
IF, WB, ELISA

Spécificité de l'espèce:  
Humain

Contrôles positifs:

WB : cellules A431, cellules HeLa, cellules HepG2,  
cellules HSC-T6, cellules Jurkat, cellules K-562,  
cellules NIH/3T3

IF : cellules MCF-7,

## Informations générales

SKP1(S-phase kinase-associated protein 1) is also named as EMC19, OCP2, SKP1A, TCEB1L, belongs to the SKP1 family. It is an essential component of the SCF (SKP1-CUL1-F-box protein) ubiquitin ligase complex, which mediates the ubiquitination of proteins involved in cell cycle progression, signal transduction and transcription.

## Stockage

Stockage:  
Stocker à -20°C. Stable pendant un an après l'expédition.

Tampon de stockage:  
PBS avec azoture de sodium à 0,02 % et glycérol à 50 % pH 7,3

L'aliquotage n'est pas nécessaire pour le stockage à -20C

\*\*\* Les 20ul contiennent 0,1% de BSA.

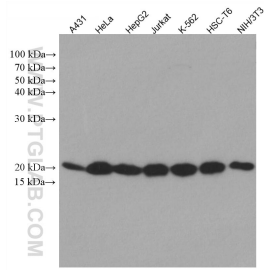
For technical support and original validation data for this product please contact:

T: 1 (888) 4PTGLAB (1-888-478-4522) (toll free  
in USA), or 1(312) 455-8498 (outside USA)

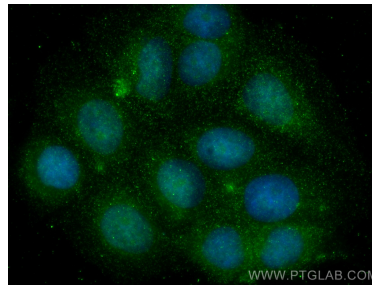
E: [proteintech@ptglab.com](mailto:proteintech@ptglab.com)  
W: [ptglab.com](http://ptglab.com)

This product is exclusively available under Proteintech Group brand and is not available to purchase from any other manufacturer.

## Données de validation sélectionnées



Various lysates were subjected to SDS PAGE followed by western blot with 67745-1-Ig (SKP1 antibody) at dilution of 1:10000 incubated at room temperature for 1.5 hours.



Immunofluorescent analysis of (4% PFA) fixed MCF-7 cells using SKP1 antibody (67745-1-Ig, Clone: 1D5G4) at dilution of 1:800 and CoraLite®488-Conjugated AffiniPure Goat Anti-Mouse IgG(H+L).