

À des fins de recherche uniquement

Anticorps Monoclonal anti-gp130

Numéro de catalogue: 67766-1-Ig **2 Publications**



Informations de base

Numéro de catalogue: 67766-1-Ig	Numéro d'acquisition GenBank: NM_002184	Méthode de purification: Purification par protéine A
Taille: 150ul, Concentration: 1000 µg/ml by Nanodrop;	Identification du gène (NCBI): 3572	CloneNo.: 1H7C5
Hôte: Mouse	Nom complet: interleukin 6 signal transducer (gp130, oncostatin M receptor)	Dilutions recommandées: WB 1:1000-1:4000 IHC 1:500-1:2000
Isotype: IgG1	MW calculé: 104 kDa	
Immunogen Catalog Number: AG28808	MW observés: 130-140 kDa	

Applications

Applications testées:
IHC, WB, ELISA

Demandes citées:
IF, IHC, IP, WB

Spécificité de l'espèce:
Humain

Espèces citées:
Humain

Contrôles positifs:

WB : cellules HepG2, cellules DU 145, cellules NCCIT, cellules PC-3

IHC : tissu placentaire humain, tissu d'amygdalite humaine, tissu de cancer du côlon humain, tissu de cancer du foie humain, tissu de cancer du poumon humain

Remarque-IHC: il est suggéré de démasquer l'antigène avec un tampon de TE buffer pH 9,0; (*) À défaut, le démasquage de l'antigène peut être effectué avec un tampon citrate pH 6,0.

Informations générales

Glycoprotein 130 (gp130, also known as IL6ST, CD130 or IL6-beta) is a ubiquitously expressed, signal-transducing receptor that serves as the signal transduction unit for IL-6 family of cytokines, including IL-6, IL-11, IL-27, leukemia inhibitory factor (LIF), OSM, ciliary neurotrophic factor (CNTF), cardiotrophin 1 (CT-1), and cardiotrophin-like cytokine (CLC) (PMID: 9143707; 20610800). These cytokines signal through the gp130/Jak/STAT pathway (PMID: 9716487). Binding of IL-6 to IL-6R induces gp130 homodimerization and formation of a high-affinity receptor complex, which activates Jaks. That causes phosphorylation of gp130 tyrosine residues which in turn activates STAT3. gp130 is a type I transmembrane protein, and can also exist as a soluble form (sgp130). sgp130 binds to sIL-6R/IL-6 complexes and prevents their interactions with membrane-anchored gp130 on target cells (PMID: 9815830).

Publications notables

Autrice	Pubmed ID	Journal	Application
Yanmiao Huo	35487760	Cell Prolif	WB,IF,IP
Yue Zhu	37306188	Cancer Med	IHC

Stockage

Stockage:

Stocker à -20°C. Stable pendant un an après l'expédition.

Tampon de stockage:

PBS avec azoture de sodium à 0,02 % et glycérol à 50 % pH 7,3

L'aliquotage n'est pas nécessaire pour le stockage à -20C

*** Les 20ul contiennent 0,1% de BSA.

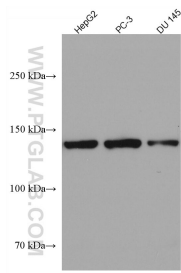
For technical support and original validation data for this product please contact:

T: 1 (888) 4PTGLAB (1-888-478-4522) (toll free in USA), or 1(312) 455-8498 (outside USA)

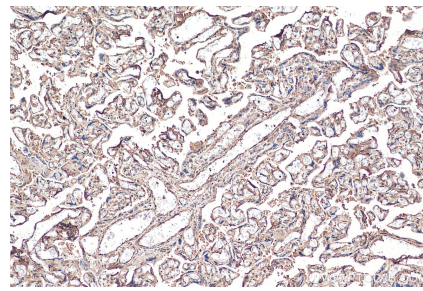
E: proteintech@ptglab.com
W: ptglab.com

This product is exclusively available under Proteintech Group brand and is not available to purchase from any other manufacturer.

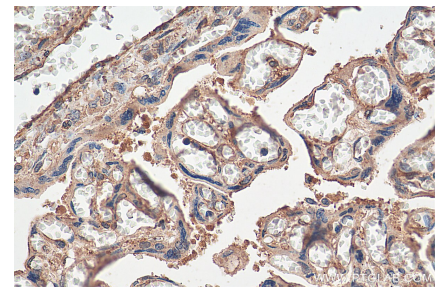
Données de validation sélectionnées



Various lysates were subjected to SDS PAGE followed by western blot with 67766-1-Ig (gp130 antibody) at dilution of 1:2000 incubated at room temperature for 1.5 hours.



Immunohistochemical analysis of paraffin-embedded human placenta tissue slide using 67766-1-Ig (gp130 antibody) at dilution of 1:1000 (under 10x lens). Heat mediated antigen retrieval with Tris-EDTA buffer (pH 9.0).



Immunohistochemical analysis of paraffin-embedded human placenta tissue slide using 67766-1-Ig (gp130 antibody) at dilution of 1:1000 (under 40x lens). Heat mediated antigen retrieval with Tris-EDTA buffer (pH 9.0).