

À des fins de recherche uniquement

Anticorps Monoclonal anti-CLIP-115/CLIP2



Numéro de catalogue: 67776-1-Ig **Phare**

Informations de base

Numéro de catalogue: 67776-1-Ig	Numéro d'acquisition GenBank: BC150332	Méthode de purification: Purification par protéine G
Taille: 150ul , Concentration: 1000 µg/ml by Nanodrop;	Identification du gène (NCBI): 7461	CloneNo.: 2E6B6
Hôte: Mouse	Nom complet: CAP-GLY domain containing linker protein 2	Dilutions recommandées: WB 1:2000-1:20000 IF 1:200-1:800
Isotype: IgG1	MW calculé 1011 aa, 112 kDa	
Immunogen Catalog Number: AG18902	MW observés: 120 kDa	

Applications

Applications testées:
IF, WB, ELISA

Spécificité de l'espèce:
Humain, Lapin, porc, rat, souris

Contrôles positifs:

WB : tissu de cervelet de souris, cellules A549, tissu cérébral de lapin, tissu cérébral de porc, tissu cérébral de rat, tissu cérébral de souris, tissu de cervelet de porc, tissu de cervelet de rat

IF : cellules A549,

Informations générales

CLIP-2/CLIP-115 is a cytoplasmic linker protein (CLIP) that links membranous organelles to microtubules. CLIP-115 is enriched in the axonal growth cone and it enables neuronal polarization by controlling the stabilization of microtubules. Mutation of CLIP-115 has been associated with Williams-Beuren syndrome.

Stockage

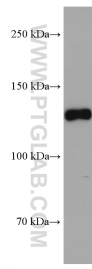
Stockage:
Stocker à -20°C. Stable pendant un an après l'expédition.
Tampon de stockage:
PBS avec azoture de sodium à 0,02 % et glycérol à 50 % pH 7,3
L'aliquotage n'est pas nécessaire pour le stockage à -20C

***** Les 20ul contiennent 0,1% de BSA.**

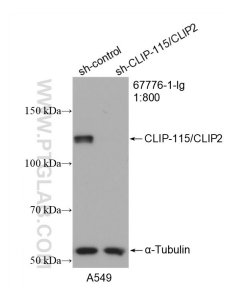
For technical support and original validation data for this product please contact:
T: 1 (888) 4PTGLAB (1-888-478-4522) (toll free in USA), or 1(312) 455-8498 (outside USA)
E: proteintech@ptglab.com
W: ptglab.com

This product is exclusively available under Proteintech Group brand and is not available to purchase from any other manufacturer.

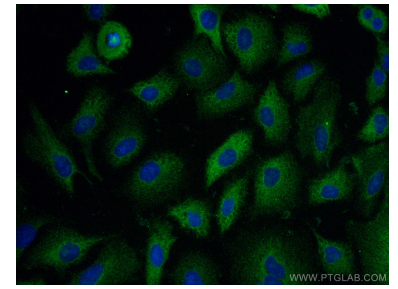
Données de validation sélectionnées



mouse cerebellum tissue were subjected to SDS PAGE followed by western blot with 67776-1-Ig (CLIP2 antibody) at dilution of 1:10000 incubated at room temperature for 1.5 hours.



WB result of CLIP-115/CLIP2 antibody (67776-1-Ig; 1:800; incubated at room temperature for 1.5 hours) with sh-Control and sh-CLIP-115/CLIP2 transfected A549 cells.



Immunofluorescent analysis of (-20°C Methanol) fixed A549 cells using CLIP-115/CLIP2 antibody (67776-1-Ig, Clone: 2E6B6) at dilution of 1:400 and CoraLite®488-Conjugated AffiniPure Goat Anti-Mouse IgG(H+L).