

À des fins de recherche uniquement

Anticorps Monoclonal anti-GOLPH3



Numéro de catalogue: 67777-1-Ig **1 Publications**

Informations de base

| | | |
|--|---|--|
| Numéro de catalogue: 67777-1-Ig | Numéro d'acquisition GenBank: BC033725 | Méthode de purification: Purification par protéine A |
| Taille: 150ul , Concentration: 1000 µg/ml by Nanodrop; | Identification du gène (NCBI): 64083 | CloneNo.: 3H2A5 |
| Hôte: Mouse | Nom complet: golgi phosphoprotein 3 (coat-protein) | Dilutions recommandées: WB 1:5000-1:50000 IHC 1:500-1:2000 IF 1:200-1:800 |
| Isotype: IgG2a | MW calculé 298 aa, 34 kDa | |
| Immunogen Catalog Number: AG5443 | | |

Applications

Applications testées:

IF, IHC, WB, ELISA

Demandes citées:

PLA

Spécificité de l'espèce:

Humain, rat, souris

Espèces citées:

Humain

Contrôles positifs:

WB : cellules HeLa, cellules 4T1, cellules HEK-293, cellules HSC-T6, cellules Jurkat, cellules K-562, cellules NIH/3T3

IHC : tissu de cancer du côlon humain, tissu de cancer du foie humain

IF : cellules HeLa,

Remarque-IHC: il est suggéré de démasquer l'antigène avec un tampon de TE buffer pH 9,0; (*) À défaut, le démasquage de l'antigène peut être effectué avec un tampon citrate pH 6,0.

Informations générales

GOLPH3 (also called GPP34, GMx33, MIDAS, or yeast Vps74p) is a 34-kDa Golgi-associated protein conserved from yeast to human. GOLPH3 binds to PtdIns(4)P-rich trans-Golgi membranes and MYO18A conveying a tensile force required for efficient tubule and vesicle formation (PMID: 19837035). GOLPH3 has been recently demonstrated as a novel oncoprotein amplified in various types of human malignancies, including melanoma, breast, non-small cell lung cancer, gliomas and connective tissue tumors (PMID:19553991; 23006319; 21499727; 22745132). Enhanced activation of mTOR signalling represents a molecular basis for the oncogenic activity of GOLPH3 (PMID: 19553991).

Publications notables

| Autrice | Pubmed ID | Journal | Application |
|--------------|-----------|----------------|-------------|
| Jun-Wei Song | 34671013 | Cell Death Dis | PLA |

Stockage

Stockage:

Stocker à -20 °C.

Tampon de stockage:

PBS avec azoture de sodium à 0,02 % et glycérol à 50 % pH 7,3

L'aliquotage n'est pas nécessaire pour le stockage à -20C

*** Les 20ul contiennent 0,1% de BSA.

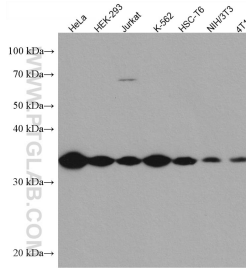
For technical support and original validation data for this product please contact:

T: 1 (888) 4PTGLAB (1-888-478-4522) (toll free in USA), or 1(312) 455-8498 (outside USA)

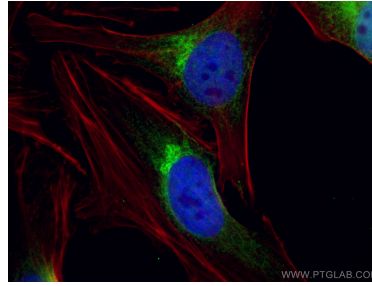
E: proteintech@ptglab.com
W: ptglab.com

This product is exclusively available under Proteintech Group brand and is not available to purchase from any other manufacturer.

Données de validation sélectionnées



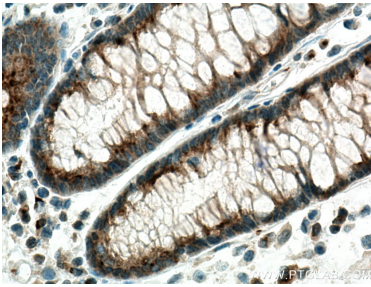
Various lysates were subjected to SDS PAGE followed by western blot with 67777-1-Ig (GOLPH3 antibody) at dilution of 1:10000 incubated at room temperature for 1.5 hours.



Immunofluorescent analysis of (4% PFA) fixed HeLa cells using GOLPH3 antibody (67777-1-Ig, Clone: 3H2A5) at dilution of 1:400 and CoraLite®488-Conjugated AffiniPure Goat Anti-Mouse IgG(H+L), CL594-Phalloidin (red).



Immunohistochemical analysis of paraffin-embedded human colon cancer tissue slide using 67777-1-Ig (GOLPH3 antibody) at dilution of 1:1000 (under 40x lens). Heat mediated antigen retrieval with Tris-EDTA buffer (pH 9.0).



Immunohistochemical analysis of paraffin-embedded human colon cancer tissue slide using 67777-1-Ig (GOLPH3 antibody) at dilution of 1:1000 (under 40x lens). Heat mediated antigen retrieval with Tris-EDTA buffer (pH 9.0).