

À des fins de recherche uniquement

Anticorps Monoclonal anti- PPP2R2A/B/C



Numéro de catalogue: 67783-1-Ig **1 Publications**

Informations de base

Numéro de catalogue: 67783-1-Ig	Numéro d'acquisition GenBank: BC031790	Méthode de purification: Purification par protéine G
Taille: 150ul , Concentration: 1000 µg/ml by Nanodrop;	Identification du gène (NCBI): 5521	CloneNo.: 2E1D5
Hôte: Mouse	Nom complet: protein phosphatase 2 (formerly 2A), regulatory subunit B, beta isoform	Dilutions recommandées: WB 1:1000-1:6000 IHC 1:50-1:500
Isotype: IgG1	MW calculé 443 aa, 52 kDa	
Immunogen Catalog Number: AG30774	MW observés: 52 kDa	

Applications

Applications testées:

IHC, WB, ELISA

Demandes citées:

WB

Spécificité de l'espèce:

Humain, Lapin, porc, rat, souris

Espèces citées:

Humain

Contrôles positifs:

WB : cellules HepG2, cellules HeLa, cellules Jurkat, cellules K-562, cellules LNCaP, tissu cérébral de lapin, tissu cérébral de porc, tissu cérébral de rat, tissu cérébral de souris

IHC : tissu cérébral de souris, tissu de cervelet de souris

Remarque-IHC: il est suggéré de démasquer l'antigène avec un tampon de TE buffer pH 9,0; (*) À défaut, le démasquage de l'antigène peut être effectué avec un tampon citrate pH 6,0.

Informations générales

The PPP2R2B gene encodes a deduced 443 amino acid protein of approximately 52 kDa, which is a brain-specific regulatory subunit B of protein phosphatase 2. PPP2R2B is a Subunit of PP2A, a highly conserved constitutive enzyme (PMID:11719278). PPP2R2B (Bβ) is an important regulator of protein phosphatase 2A (PP2A) activity in the brain. Through differential promoter usage and alternative splicing, two major isoforms Bβ1 and Bβ2 with divergent sub-cellular targeting N termini are produced. Bβ plays an important role in neuronal survival. It has 5 isoforms produced by alternative splicing. This antibody can recognize PPP2R2A, PPP2R2B, and PPP2R2C due to the immunogen of PPP2R2B having high homology with PPP2R2A and PPP2R2C.

Publications notables

Autrice	Pubmed ID	Journal	Application
Jiao Li	35441157	MedComm (2020)	WB

Stockage

Stockage:

Stocker à -20°C. Stable pendant un an après l'expédition.

Tampon de stockage:

PBS avec azoture de sodium à 0,02 % et glycérol à 50 % pH 7,3

L'aliquotage n'est pas nécessaire pour le stockage à -20C

*** Les 20ul contiennent 0,1% de BSA.

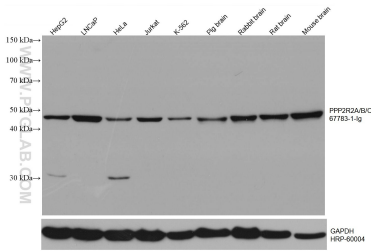
For technical support and original validation data for this product please contact:

T: 1 (888) 4PTGLAB (1-888-478-4522) (toll free in USA), or 1(312) 455-8498 (outside USA)

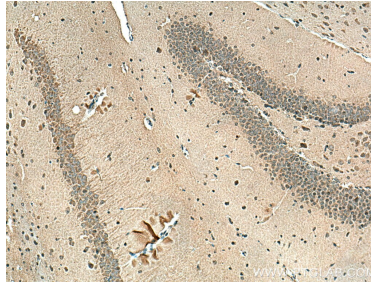
E: proteintech@ptglab.com
W: ptglab.com

This product is exclusively available under Proteintech Group brand and is not available to purchase from any other manufacturer.

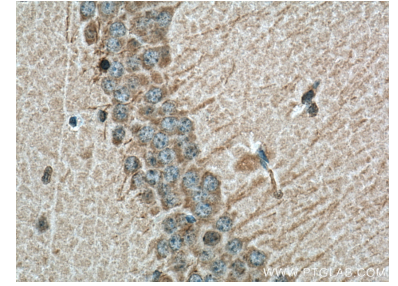
Données de validation sélectionnées



Various lysates were subjected to SDS PAGE followed by western blot with 67783-1-Ig (PPP2R2A/B/C antibody) at dilution of 1:3000 incubated at room temperature for 1.5 hours. The membrane was stripped and reblotted with HRP-conjugated GAPDH Monoclonal antibody (HRP-60004) as loading control.



Immunohistochemical analysis of paraffin-embedded mouse brain tissue slide using 67783-1-Ig (PPP2R2A/B/C antibody) at dilution of 1:200 (under 10x lens). Heat mediated antigen retrieval with Tris-EDTA buffer (pH 9.0).



Immunohistochemical analysis of paraffin-embedded mouse brain tissue slide using 67783-1-Ig (PPP2R2A/B/C antibody) at dilution of 1:200 (under 40x lens). Heat mediated antigen retrieval with Tris-EDTA buffer (pH 9.0).