

À des fins de recherche uniquement

# Anticorps Monoclonal anti-citrate synthase



Numéro de catalogue: 67784-1-Ig

## Informations de base

Numéro de catalogue: 67784-1-Ig	Numéro d'acquisition GenBank: BC010106	Méthode de purification: Purification par protéine G
Taille: 150ul , Concentration: 1000 µg/ml by Nanodrop;	Identification du gène (NCBI): 1431	CloneNo.: 2F9G6
Hôte: Mouse	Nom complet: citrate synthase	Dilutions recommandées: WB 1:2000-1:10000 IHC 1:500-1:2000 IF 1:400-1:1600
Isotype: IgG1	MW calculé 466 aa, 52 kDa	
Immunogen Catalog Number: AG9255		

## Applications

### Applications testées:

IF, IHC, WB, ELISA

### Spécificité de l'espèce:

Humain, rat, souris

**Remarque-IHC: il est suggéré de démasquer l'antigène avec un tampon de TE buffer pH 9,0; (\*) À défaut, 'le démasquage de l'antigène peut être effectué avec un tampon citrate pH 6,0.**

### Contrôles positifs:

WB : cellules LNCaP, cellules HEK-293, cellules HeLa, cellules HepG2, cellules HSC-T6, cellules Jurkat, cellules K-562, cellules NIH/3T3, cellules PC-12

IHC : tissu de cancer du sein humain,

IF : cellules MCF-7,

## Informations générales

Citrate synthase (CS), the first and rate-limiting enzyme of the tricarboxylic acid cycle, plays a key role in regulating energy generation of mitochondrial respiration(PMID:19479947).It belongs to the citrate synthase family. The deduced 466-amino acid protein contains an N-terminal mitochondrial targeting sequence and a motif highly conserved in citrate synthases(PMID:12549038). It can exist as a dimer(PMID:8749851). Northern blot analysis detected no CS expression in thymus and small intestine(PMID:12549038). This antibody is specific to CS.

## Stockage

### Stockage:

Stocker à -20°C. Stable pendant un an après l'expédition.

### Tampon de stockage:

PBS avec azoture de sodium à 0,02 % et glycérol à 50 % pH 7,3

L'aliquotage n'est pas nécessaire pour le stockage à -20C

\*\*\* Les 20ul contiennent 0,1% de BSA.

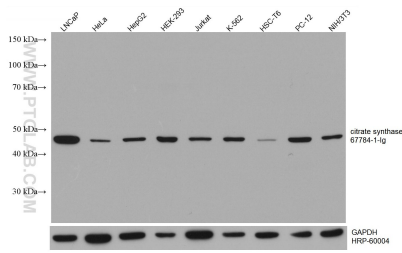
For technical support and original validation data for this product please contact:

T: 1 (888) 4PTGLAB (1-888-478-4522) (toll free in USA), or 1(312) 455-8498 (outside USA)

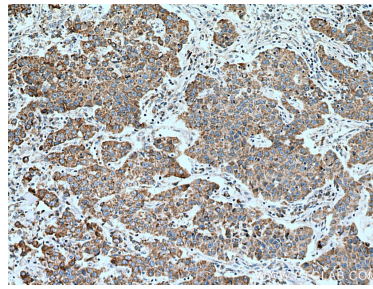
E: proteintech@ptglab.com  
W: ptglab.com

This product is exclusively available under Proteintech Group brand and is not available to purchase from any other manufacturer.

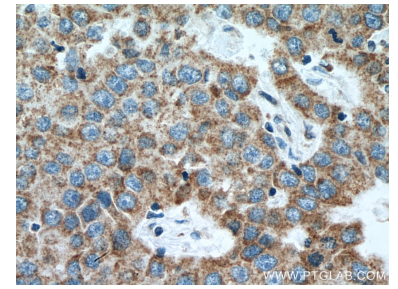
## Données de validation sélectionnées



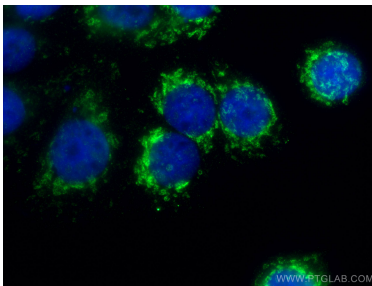
LNCaP cells were subjected to SDS PAGE followed by western blot with 67784-1-Ig (citrate synthase antibody) at dilution of 1:5000 incubated at room temperature for 1.5 hours. The membrane was stripped and reblotted with HRP-conjugated GAPDH Monoclonal antibody (HRP-60004) as loading control.



Immunohistochemical analysis of paraffin-embedded human breast cancer tissue slide using 67784-1-Ig (citrate synthase antibody) at dilution of 1:1000 (under 10x lens). Heat mediated antigen retrieval with Tris-EDTA buffer (pH 9.0).



Immunohistochemical analysis of paraffin-embedded human breast cancer tissue slide using 67784-1-Ig (citrate synthase antibody) at dilution of 1:1000 (under 40x lens). Heat mediated antigen retrieval with Tris-EDTA buffer (pH 9.0).



Immunofluorescent analysis of (4% PFA) fixed MCF-7 cells using citrate synthase antibody (67784-1-Ig, Clone: 2F9G6) at dilution of 1:800 and CoraLite@488-Conjugated AffiniPure Goat Anti-Mouse IgG(H+L). DAPI (blue).