

À des fins de recherche uniquement

Anticorps Monoclonal anti-SERBP1

Numéro de catalogue: 67792-1-Ig



Informations de base

Numéro de catalogue: 67792-1-Ig	Numéro d'acquisition GenBank: BC008045	Méthode de purification: Purification par protéine G
Taille: 150ul , Concentration: 500 µg/ml by Nanodrop;	Identification du gène (NCBI): 26135	CloneNo.: 1D4H1
Hôte: Mouse	Nom complet: SERPINE1 mRNA binding protein 1	Dilutions recommandées: WB 1:5000-1:50000 IP 0.5-4.0 ug for IP and 1:1000-1:4000 for WB
Isotype: IgG1	MW calculé: 45 kDa	IHC 1:500-1:2000
Immunogen Catalog Number: AG30202	MW observés: 50 kDa	IF 1:200-1:800

Applications

Applications testées:

IF, IHC, IP, WB, ELISA

Spécificité de l'espèce:

canin, Humain, porc, rat, souris

Remarque-IHC: il est suggéré de démasquer l'antigène avec un tampon de TE buffer pH 9,0; (*) À défaut, 'le démasquage de l'antigène peut être effectué avec un tampon citrate pH 6,0.

Contrôles positifs:

WB : cellules LNCaP, cellules HEK-293, cellules HeLa, cellules HSC-T6, cellules Jurkat, cellules K-562, cellules MDCK

IP : cellules HeLa,

IHC : tissu de cancer du foie humain,

IF : tissu de cancer du foie humain,

Informations générales

The plasminogen activator system (PA) plays an important role in invasion and metastasis of solid tumors. The PA Inhibitor type 1 (PAI-1) is the main physiologic regulator of plasminogen activation. PAI-RBP1 (PAI-1 mRNA Binding Protein 1, also named SERBP1), is an RNA-binding protein containing an RG-rich domain and an RGG box domain that might be methylated by protein arginine N-methyltransferases (PRMTs). SERBP1 was identified as an interacting partner of a Tudor domain containing protein TDRD3, and can localize to cytoplasmic stress granules (SGs).

Stockage

Stockage:

Stocker à -20°C. Stable pendant un an après l'expédition.

Tampon de stockage:

PBS avec azoture de sodium à 0,02 % et glycérol à 50 % pH 7,3

L'aliquotage n'est pas nécessaire pour le stockage à -20C

*** Les 20ul contiennent 0,1% de BSA.

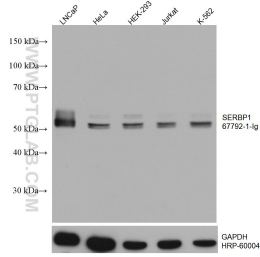
For technical support and original validation data for this product please contact:

T: 1 (888) 4PTGLAB (1-888-478-4522) (toll free in USA), or 1(312) 455-8498 (outside USA)

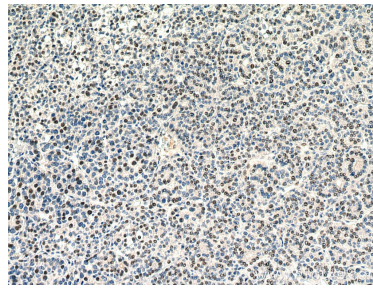
E: proteintech@ptglab.com
W: ptglab.com

This product is exclusively available under Proteintech Group brand and is not available to purchase from any other manufacturer.

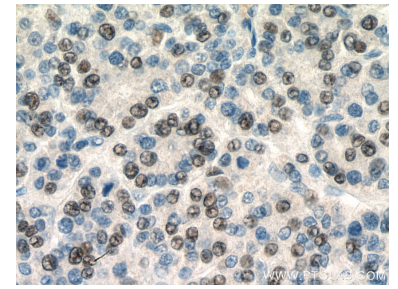
Données de validation sélectionnées



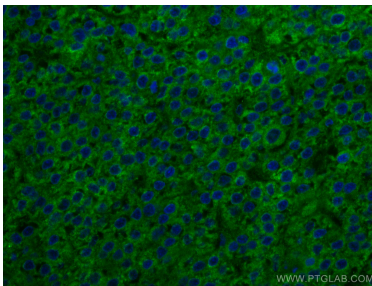
Various lysates were subjected to SDS PAGE followed by western blot with 67792-1-Ig (SERBP1 antibody) at dilution of 1:20000 incubated at room temperature for 1.5 hours. The membrane was stripped and reblotted with HRP-conjugated GAPDH Monoclonal antibody (HRP-60004) as loading control.



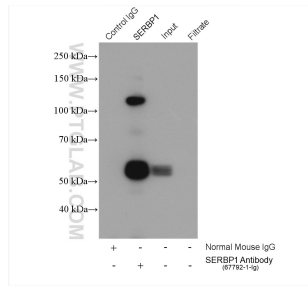
Immunohistochemical analysis of paraffin-embedded human liver cancer tissue slide using 67792-1-Ig (SERBP1 antibody) at dilution of 1:2000 (under 10x lens). Heat mediated antigen retrieval with Tris-EDTA buffer (pH 9.0).



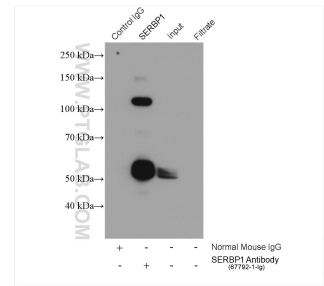
Immunohistochemical analysis of paraffin-embedded human liver cancer tissue slide using 67792-1-Ig (SERBP1 antibody) at dilution of 1:2000 (under 40x lens). Heat mediated antigen retrieval with Tris-EDTA buffer (pH 9.0).



Immunofluorescent analysis of (4% PFA) fixed human liver cancer tissue using SERBP1 antibody (67792-1-Ig, Clone: 1D4H1) at dilution of 1:400 and CoraLite®488-Conjugated AffiniPure Goat Anti-Mouse IgG(H+L). DAPI (blue).



IP result of anti-SERBP1 (IP:67792-1-Ig, 5ug; Detection:67792-1-Ig 1:2000) with HeLa cells lysate 1880 ug.



IP result of anti-SERBP1 (IP:67792-1-Ig, 5ug; Detection:67792-1-Ig 1:2000) with HeLa cells lysate 1880 ug.