

À des fins de recherche uniquement

# Anticorps Monoclonal anti-Desmin

Numéro de catalogue: 67793-1-Ig **4 Publications**



## Informations de base

Numéro de catalogue: 67793-1-Ig	Numéro d'acquisition GenBank: BC032116	Méthode de purification: Purification par protéine G
Taille: 150ul , Concentration: 1000 µg/ml by Nanodrop;	Identification du gène (NCBI): 1674	CloneNo.: 2B1A11
Hôte: Mouse	Nom complet: desmin	Dilutions recommandées: WB 1:5000-1:50000 IHC 1:500-1:2000 IF 1:200-1:800
Isotype: IgG1	MW calculé: 470 aa, 54 kDa	
Immunogen Catalog Number: AG9675	MW observés: 52 kDa	

## Applications

### Applications testées:

IF, IHC, WB, ELISA

### Demandes citées:

IF, WB

### Spécificité de l'espèce:

Humain, porc, souris

### Espèces citées:

rat, souris

**Remarque-IHC: il est suggéré de démasquer l'antigène avec un tampon de TE buffer pH 9,0; (\*) À défaut, le démasquage de l'antigène peut être effectué avec un tampon citrate pH 6,0.**

### Contrôles positifs:

WB : tissu cardiaque de porc, côlon de porc, muscle squelettique de porc, tissu de muscle squelettique de souris, tissu testiculaire de souris

IHC : tissu de côlon humain, tissu de muscle squelettique de souris

IF : tissu de côlon humain, tissu d'appendicite humain, tissu de muscle squelettique de souris

## Informations générales

Desmin is the main intermediate filament protein in skeletal and cardiac muscle cells and is essential for both the structural integrity and the survival of muscle cells. As an abundant muscle-specific protein, desmin has been widely used as a marker of muscle derived tumors. Anti-desmin is also valuable in the differential diagnosis of tumors of uncertain origin.

## Publications notables

Autrice	Pubmed ID	Journal	Application
Zongren Hu	36571651	Mol Cell Biochem	WB,IF
Weifeng Hu	34921827	Exp Cell Res	IF
Yingzheng Weng	35451888	DNA Cell Biol	IF

## Stockage

### Stockage:

Stocker à -20°C. Stable pendant un an après l'expédition.

### Tampon de stockage:

PBS avec azoture de sodium à 0,02 % et glycérol à 50 % pH 7,3

L'aliquotage n'est pas nécessaire pour le stockage à -20C

\*\*\* Les 20ul contiennent 0,1% de BSA.

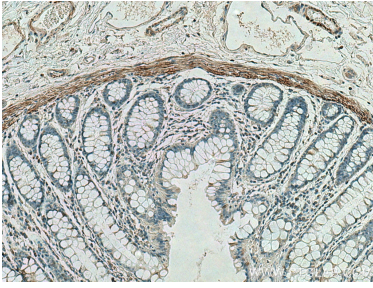
For technical support and original validation data for this product please contact:

T: 1 (888) 4PTGLAB (1-888-478-4522) (toll free in USA), or 1(312) 455-8498 (outside USA)

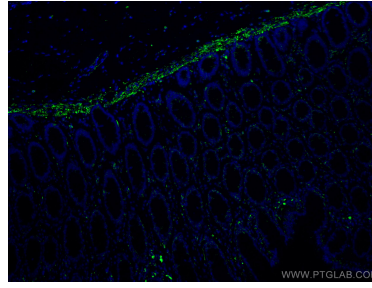
E: proteintech@ptglab.com  
W: ptglab.com

This product is exclusively available under Proteintech Group brand and is not available to purchase from any other manufacturer.

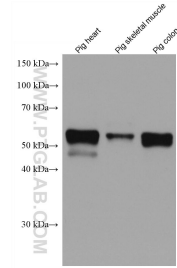
## Données de validation sélectionnées



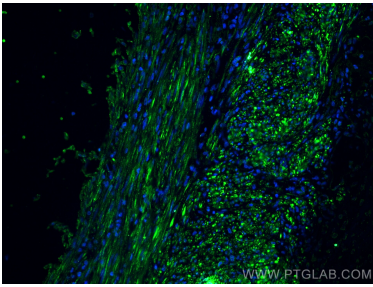
Immunohistochemical analysis of paraffin-embedded human colon tissue slide using 67793-1-Ig (Desmin antibody) at dilution of 1:1000 (under 10x lens). Heat mediated antigen retrieval with Tris-EDTA buffer (pH 9.0).



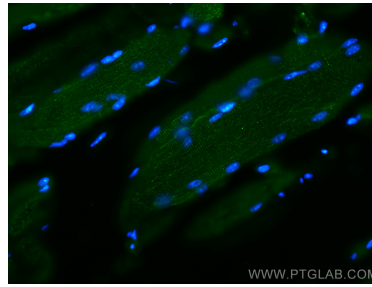
Immunofluorescent analysis of (4% PFA) fixed human colon tissue using Desmin antibody (67793-1-Ig, Clone: 2B1A11) at dilution of 1:400 and CoraLite®488-Conjugated AffiniPure Goat Anti-Mouse IgG(H+L). DAPI (blue).



Various lysates were subjected to SDS PAGE followed by western blot with 67793-1-Ig (Desmin antibody) at dilution of 1:10000 incubated at room temperature for 1.5 hours.



Immunofluorescent analysis of (4% PFA) fixed human appendicitis tissue using Desmin antibody (67793-1-Ig, Clone: 2B1A11) at dilution of 1:400 and CoraLite®488-Conjugated AffiniPure Goat Anti-Mouse IgG(H+L).



Immunofluorescent analysis of (4% PFA) fixed mouse skeletal muscle tissue using Desmin antibody (67793-1-Ig, Clone: 2B1A11) at dilution of 1:400 and CoraLite®488-Conjugated AffiniPure Goat Anti-Mouse IgG(H+L).