

À des fins de recherche uniquement

Anticorps Monoclonal anti-TWF1

Numéro de catalogue: 67796-1-Ig



Informations de base

Numéro de catalogue: 67796-1-Ig	Numéro d'acquisition GenBank: BC022344	Méthode de purification: Purification par protéine A
Taille: 150ul, Concentration: 1000 µg/ml by Nanodrop;	Identification du gène (NCBI): 5756	CloneNo.: 2F10F11
Hôte: Mouse	Nom complet: twinfilin, actin-binding protein, homolog 1 (Drosophila)	Dilutions recommandées: WB 1:2000-1:20000
Isotype: IgG2a	MW calculé 368 aa, 42 kDa	
Immunogen Catalog Number: AG28630	MW observés: 36-38 kDa	

Applications

Applications testées:
WB, ELISA
Spécificité de l'espèce:
Humain

Contrôles positifs:

WB : cellules LNCaP, cellules HEK-293, cellules HeLa,
cellules HepG2, cellules Jurkat

Informations générales

Twinfilin-1 (TWF1) is an actin-binding protein implicated in cell motility, invasion and migration. Its expression is linked to sensitivity to drugs and cancer progression. Overexpression of TWF1 has been reported in various cancers, including breast cancer and lung cancer.

Stockage

Stockage:
Stocker à -20°C. Stable pendant un an après l'expédition.
Tampon de stockage:
PBS avec azoture de sodium à 0,02 % et glycérol à 50 % pH 7,3
L'aliquotage n'est pas nécessaire pour le stockage à -20C

***** Les 20ul contiennent 0,1% de BSA.**

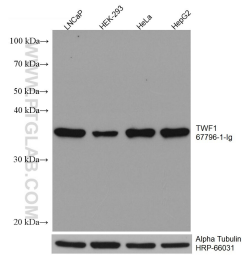
For technical support and original validation data for this product please contact:

T: 1 (888) 4PTGLAB (1-888-478-4522) (toll free
in USA), or 1(312) 455-8498 (outside USA)

E: proteintech@ptglab.com
W: ptglab.com

This product is exclusively available under Proteintech Group brand and is not available to purchase from any other manufacturer.

Données de validation sélectionnées



Various lysates were subjected to SDS PAGE followed by western blot with 67796-1-Ig (TWF1 antibody) at dilution of 1:10000 incubated at room temperature for 1.5 hours. The membrane was stripped and reblotted with HRP-conjugated Alpha Tubulin Monoclonal antibody (HRP-66031) as loading control.