

À des fins de recherche uniquement

Anticorps Monoclonal anti-MFG-E8

Numéro de catalogue: 67797-1-Ig



Informations de base

Numéro de catalogue: 67797-1-Ig	Numéro d'acquisition GenBank: BC003610	Méthode de purification: Purification par protéine A
Taille: 150ul, Concentration: 1000 µg/ml by Nanodrop;	Identification du gène (NCBI): 4240	CloneNo.: 1A1A9
Hôte: Mouse	Nom complet: milk fat globule-EGF factor 8 protein	Dilutions recommandées: WB 1:5000-1:50000 IHC 1:4000-1:16000
Isotype: IgG2b	MW calculé 43 kDa	
Immunogen Catalog Number: AG30666	MW observés: 43 kDa	

Applications

Applications testées:
FC, IHC, WB, ELISA

Spécificité de l'espèce:
Humain

Contrôles positifs:

WB : lait humain, tissu placentaire humain
IHC : tissu placentaire humain,

Remarque-IHC: il est suggéré de démasquer l'antigène avec un tampon de TE buffer pH 9.0; (*) À défaut, 'le démasquage de l'antigène peut être effectué avec un tampon citrate pH 6,0.

Informations générales

Milk fat globule-epidermal growth factor-factor 8 (MFG-E8), also known as lactadherin, is a multifunctional secreted glycoprotein exhibiting versatile functions in cell physiology affecting health and diseases. It plays roles in clearance of apoptotic cells, anti-inflammatory, wound healing, arterial remodeling, angiogenesis, enhancing tumorigenicity and cancer metastasis (PMID: 23972256). MFG-E8 consists of two-repeated EGF-like domains, a mucin-like domain and two-repeated discoïdin-like domains (C-domains), and contains an integrin-binding motif (RGD sequence) in the EGF-like domain (PMID: 11856354). It shows ubiquitous pattern of expression in various types of cells and tissues. Altered expression of MFG-E8 causes disruptions of homeostasis and is correlated with a number of diseases (PMID: 27429513).

Stockage

Stockage:
Stocker à -20 °C

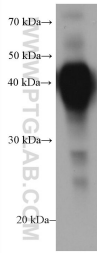
Tampon de stockage:
PBS avec azotate de sodium à 0,02 % et glycérol à 50 % pH 7,3
L'aliquotage n'est pas nécessaire pour le stockage à -20C

*** Les 20ul contiennent 0,1% de BSA.

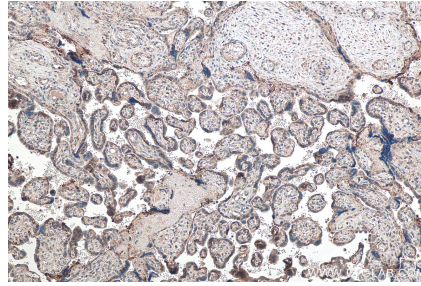
For technical support and original validation data for this product please contact:
T: 1 (888) 4PTGLAB (1-888-478-4522) (toll free in USA), or 1(312) 455-8498 (outside USA)
E: proteintech@ptglab.com
W: ptglab.com

This product is exclusively available under Proteintech Group brand and is not available to purchase from any other manufacturer.

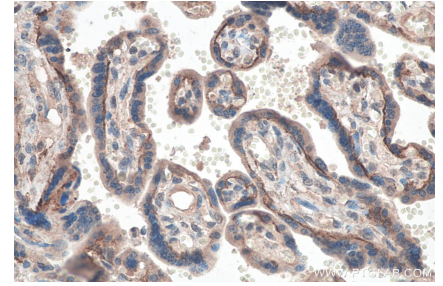
Données de validation sélectionnées



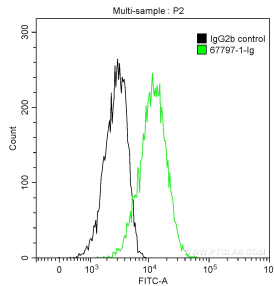
human milk were subjected to SDS PAGE followed by western blot with 67797-1-Ig (MFG-E8 antibody) at dilution of 1:20000 incubated at room temperature for 1.5 hours.



Immunohistochemical analysis of paraffin-embedded human placenta tissue slide using 67797-1-Ig (MFG-E8 antibody) at dilution of 1:8000 (under 10x lens). Heat mediated antigen retrieval with Tris-EDTA buffer (pH 9.0).



Immunohistochemical analysis of paraffin-embedded human placenta tissue slide using 67797-1-Ig (MFG-E8 antibody) at dilution of 1:8000 (under 40x lens). Heat mediated antigen retrieval with Tris-EDTA buffer (pH 9.0).



1X10⁶ MDA-MB-231 cells were stained with 0.2 ug Anti-Human MFG-E8 (67797-1-Ig, Clone: 1A1A9) and CoraLite®488-Conjugated AffiniPure Goat Anti-Mouse IgG(H+L) at dilution 1:1000 (green), or stained with 0.2 ug isotype control and CoraLite®488-Conjugated AffiniPure Goat Anti-Mouse IgG(H+L) at dilution 1:1000 (black). Cells were fixed with 90% MeOH.